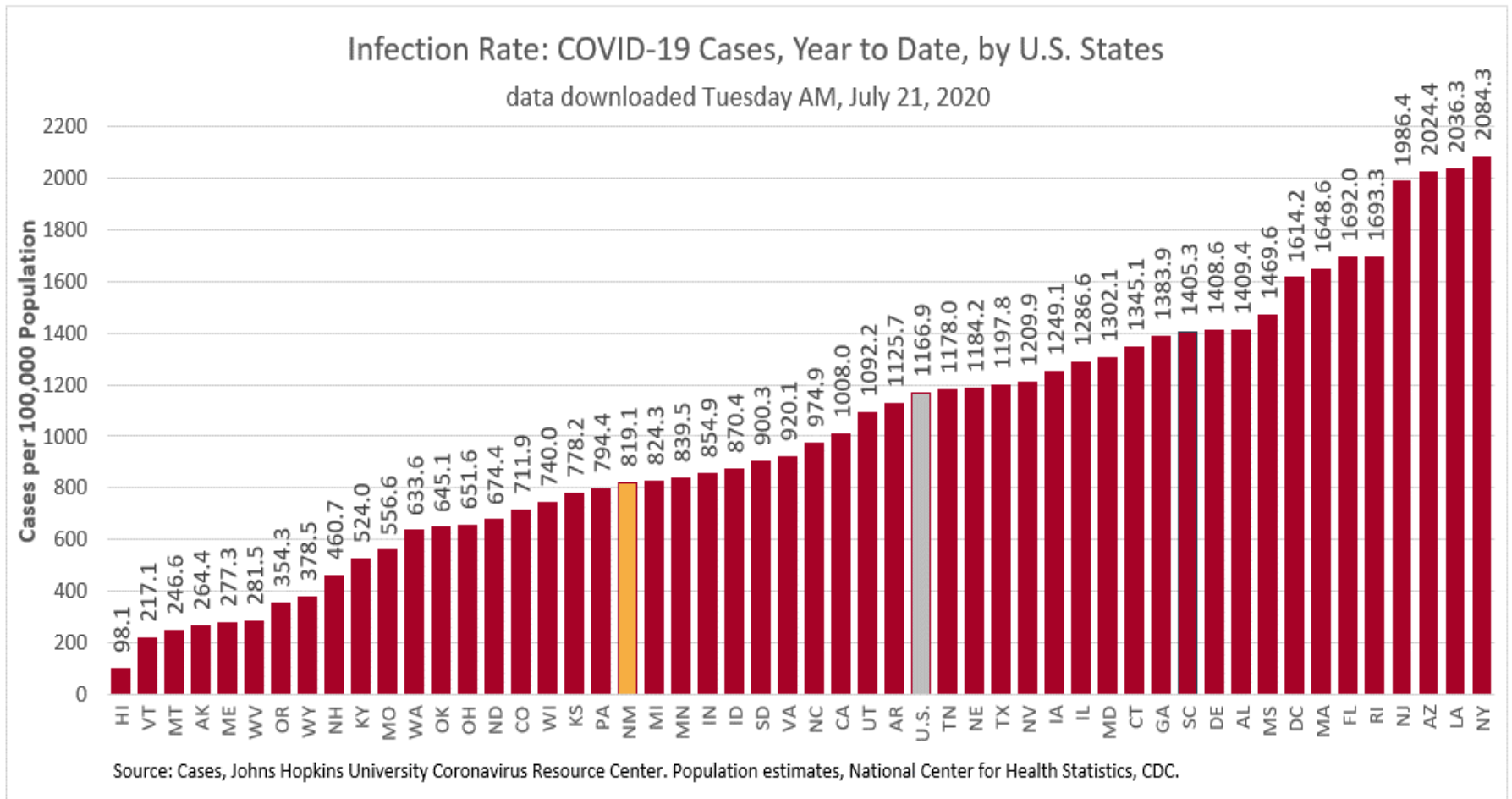


# COVID-19 in New Mexico: Epidemiologic and Modeling Update

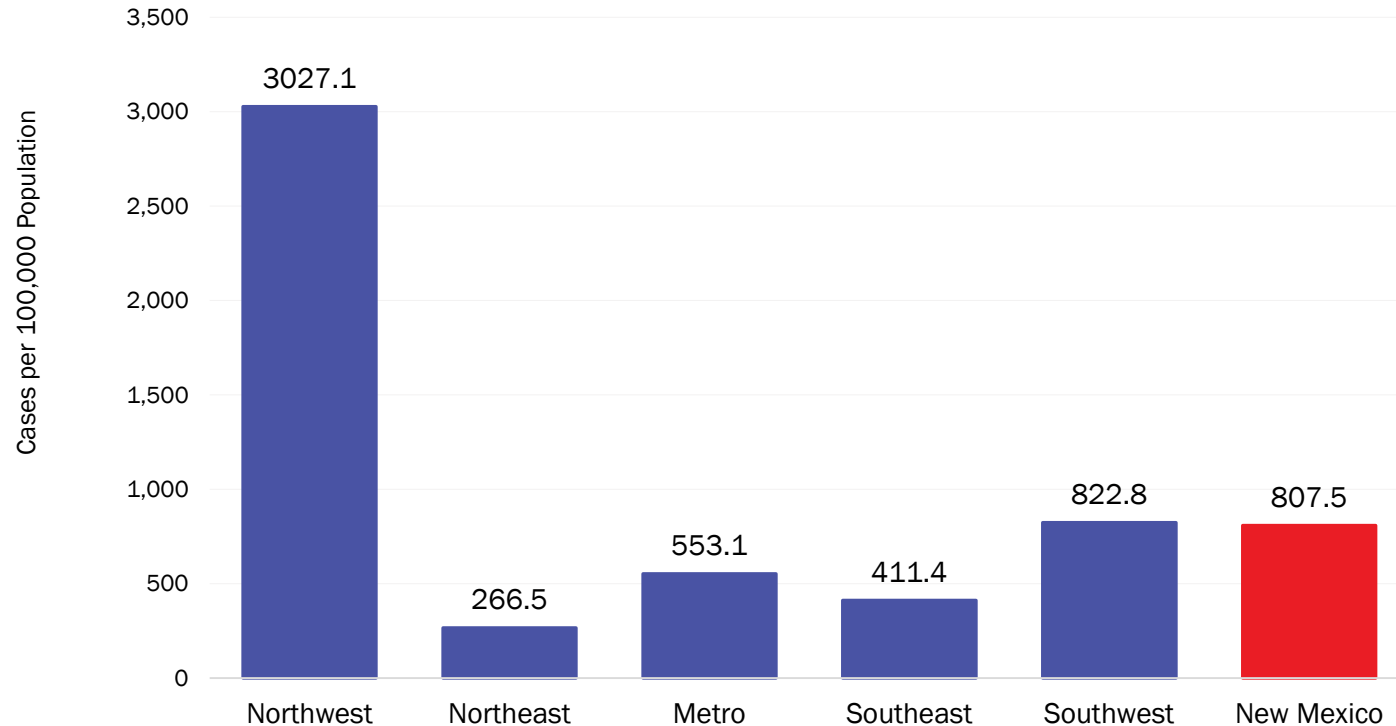
July 21, 2020

# New Mexico has the 32<sup>nd</sup> highest prevalence in the United States



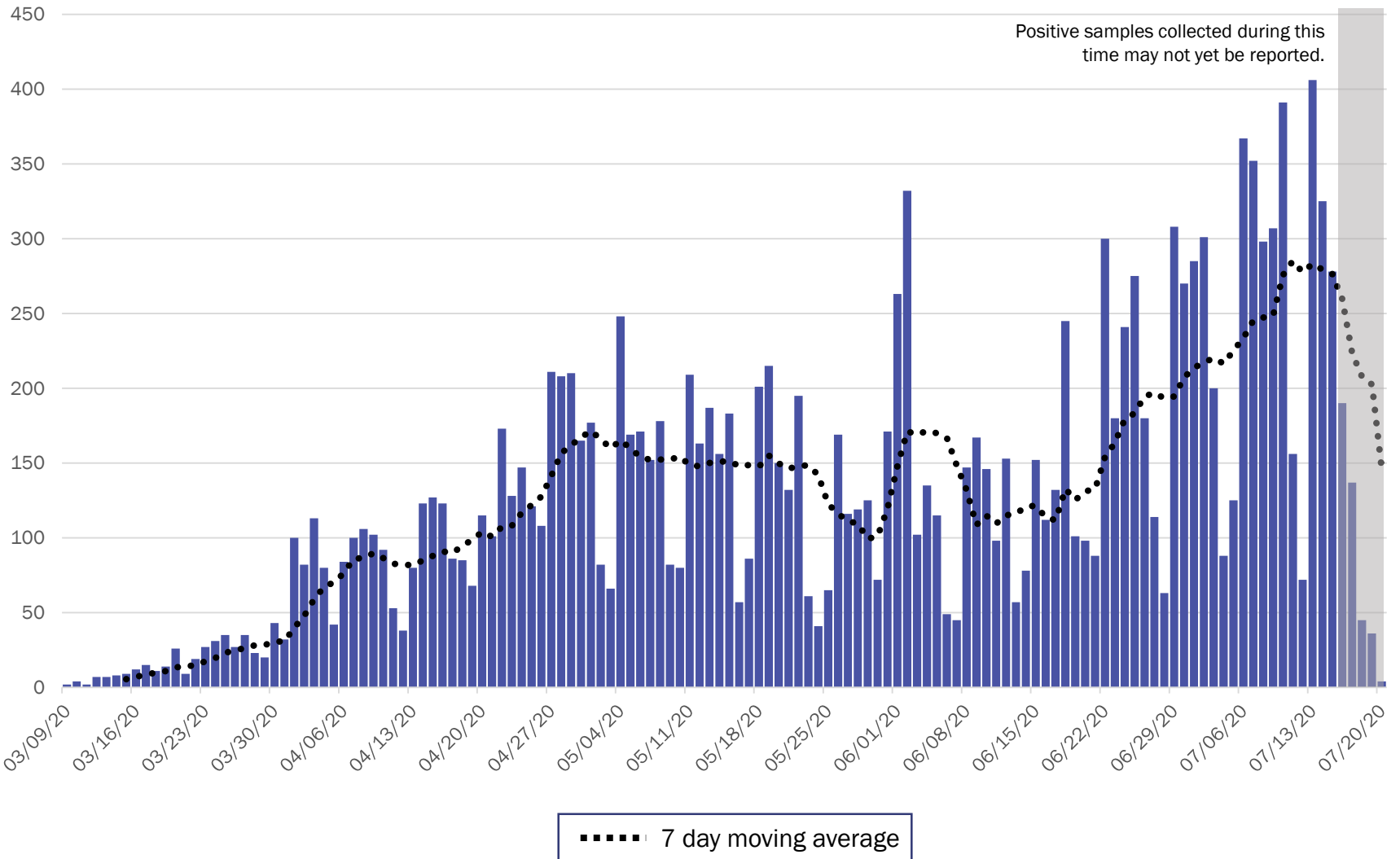
# COVID-19 prevalence per 100,000 population

Year-to-Date



Source: Infectious Disease Epidemiology Bureau, Epidemiology and Response Division 7.19.2020, New Mexico Department of Health. Population estimates, UNM Geospatial and Population Studies Program.

# New Mexico COVID-19 Cases by Date of Specimen Collection – 7/21/20



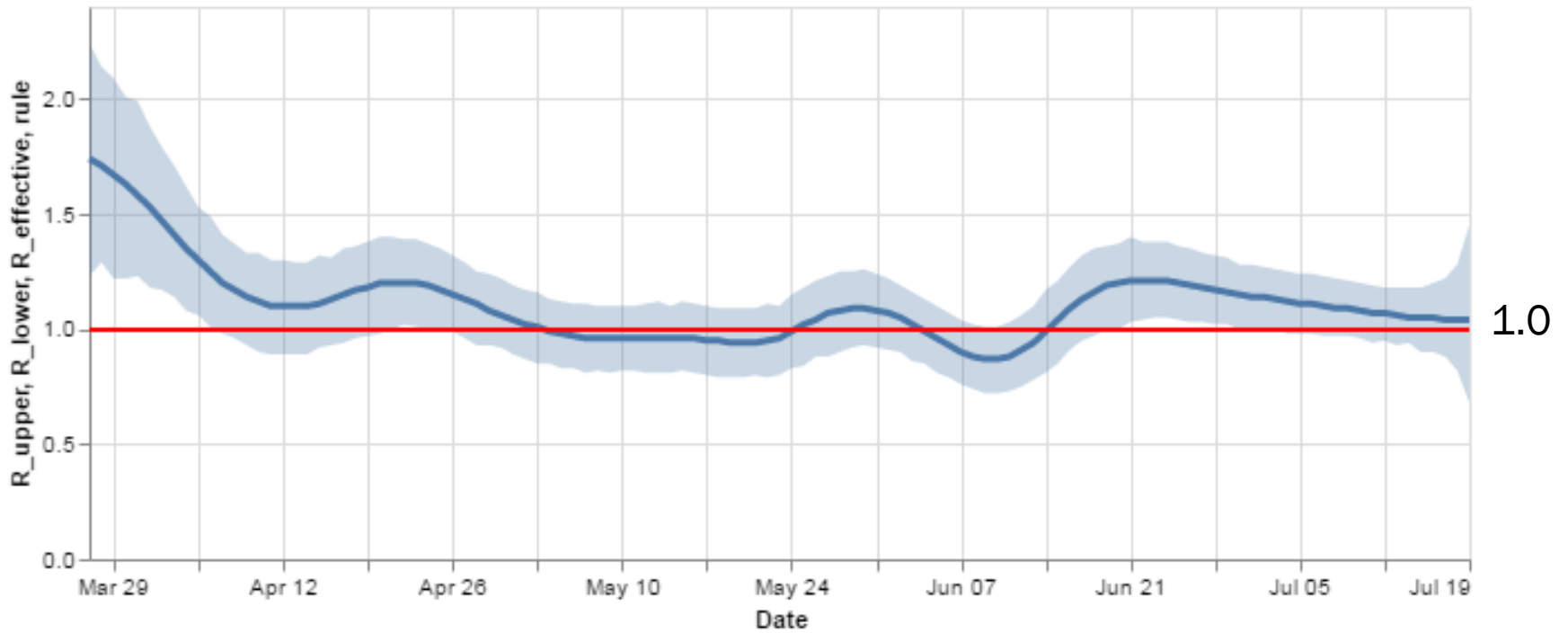
Source: Infectious Disease Epidemiology Bureau, Epidemiology and Response Division 7.21.2020, New Mexico Department of Health.



*Investing for tomorrow, delivering today.*

# Statewide R-effective has decreased to 1.0.

## R\_effective over time, STATE



Courtesy of Presbyterian Healthcare Services – July 20, 2020.

**Key**

- Low Level Endemic <1.0
- Approaching Low Level Endemic 1.0-1.05
- Requiring further mitigation >1.05

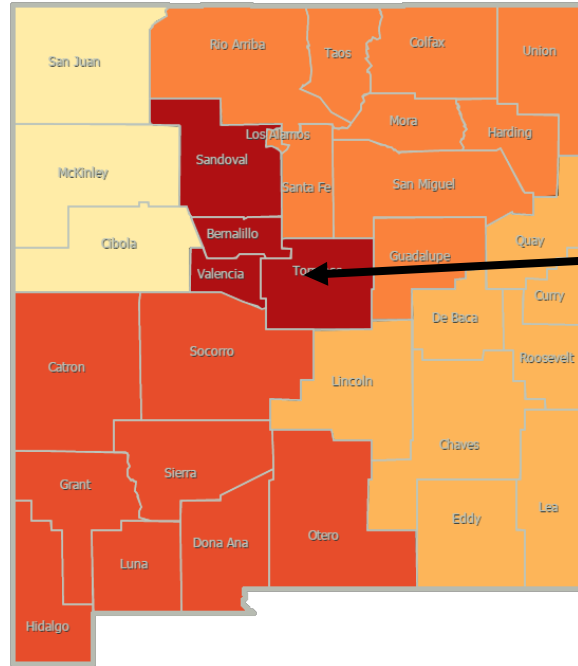
**Northwest**  
**R\_effective 0.8 ↓**

**Northeast**  
**R\_effective 1.2 ↑**

**Metro**  
**R\_effective 1.1 =**

**Southwest**  
**R\_effective 0.9 ↓**

**Southeast**  
**R\_effective 1.0 =**



As of July 13, 2020

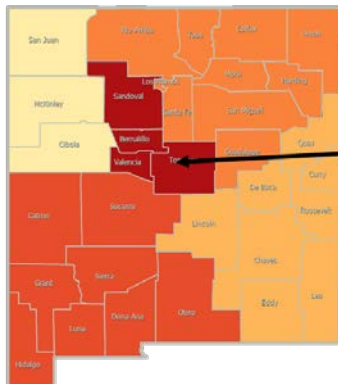
**Northwest**  
**R\_effective 0.9 ↑**

**Northeast**  
**R\_effective 1.1 =**

**Metro**  
**R\_effective 1.1 ↓**

**Southwest**  
**R\_effective 1.1 ↓**

**Southeast**  
**R\_effective 1.0 ↓**



Region	R-effective	95% Confidence Interval
State	1.0	[0.7, 1.4]
Metro	1.1	[0.6, 1.7]
Northeast	1.2	[0.0, 2.7]
Northwest	0.8	[0.0, 1.8]
Southeast	1.0	[0.0, 2.2]
Southwest	0.9	[0.2, 1.7]

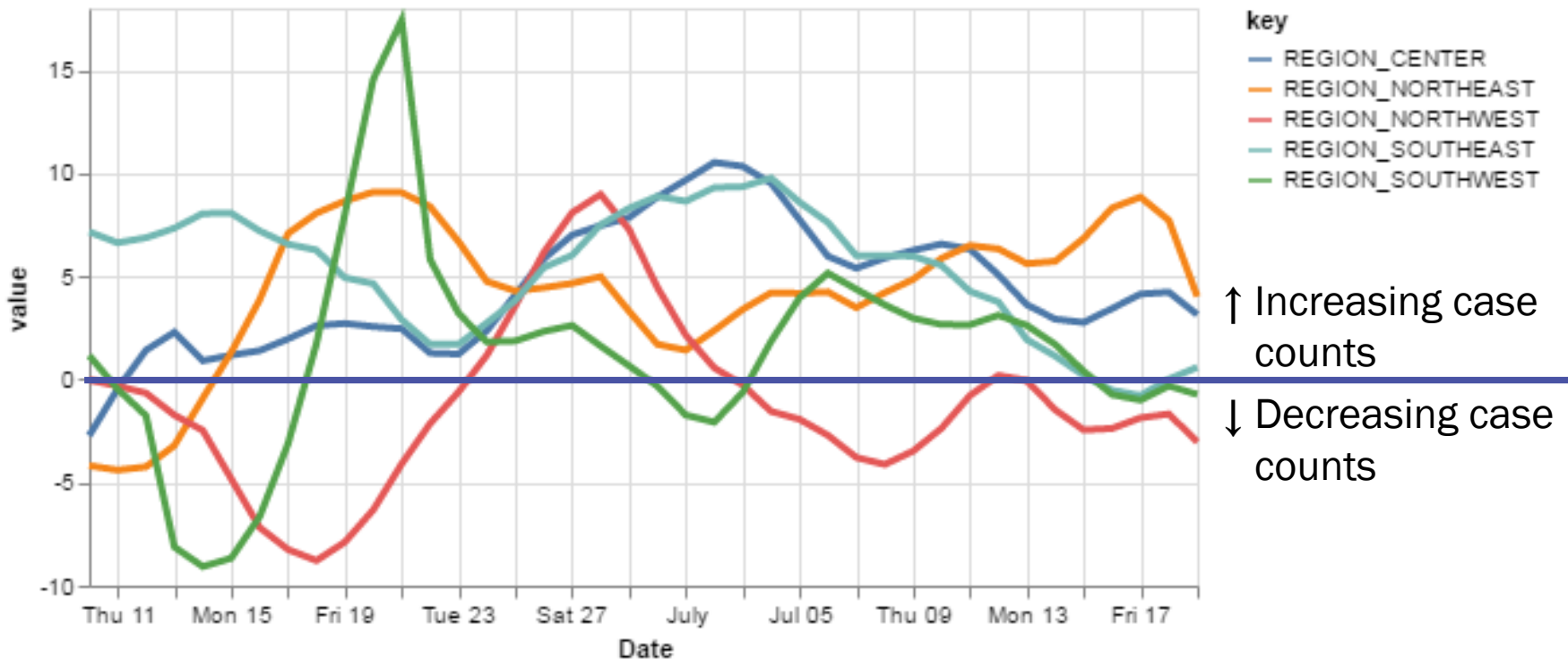
Courtesy of Presbyterian Healthcare Services – July 20, 2020.



*Investing for tomorrow, delivering today.*

# The Northeast and Metro regions continue to have increasing daily case counts.

## 14-day relative growth rate (%), Regions



↑ Increasing case counts  
↓ Decreasing case counts

Courtesy of Presbyterian Healthcare Services – July 20, 2020.

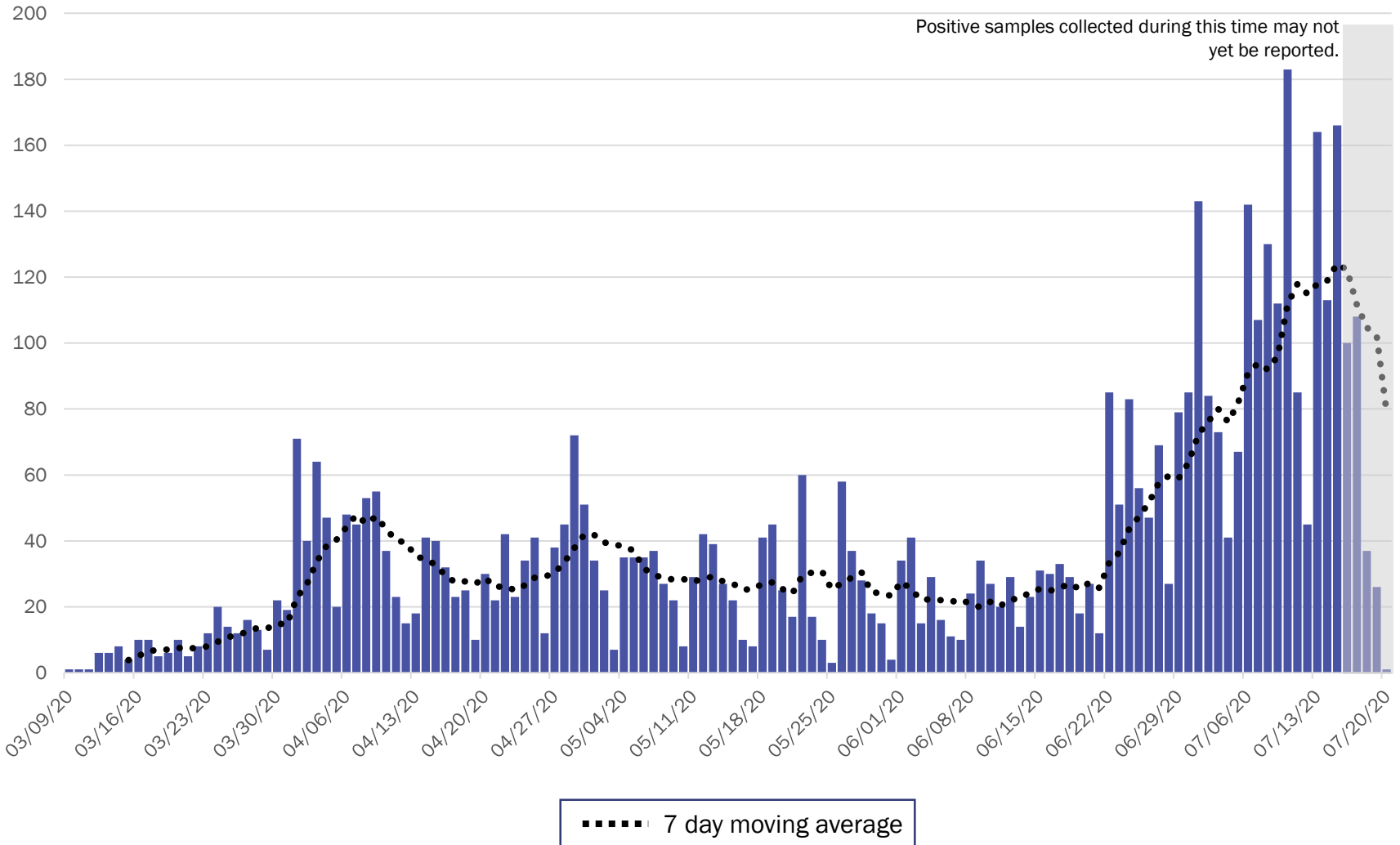


*Investing for tomorrow, delivering today.*



1190 S. St. Francis Drive • Santa Fe, NM 87505 • Phone: 505-827-2613 • Fax: 505-827-2530 • nmhealth.org

# Metro Region Case Count by Collection Date with 7 Day Moving Average – July 21, 2020



Source: Infectious Disease Epidemiology Bureau, Epidemiology and Response Division 7.21.2020, New Mexico Department of Health.

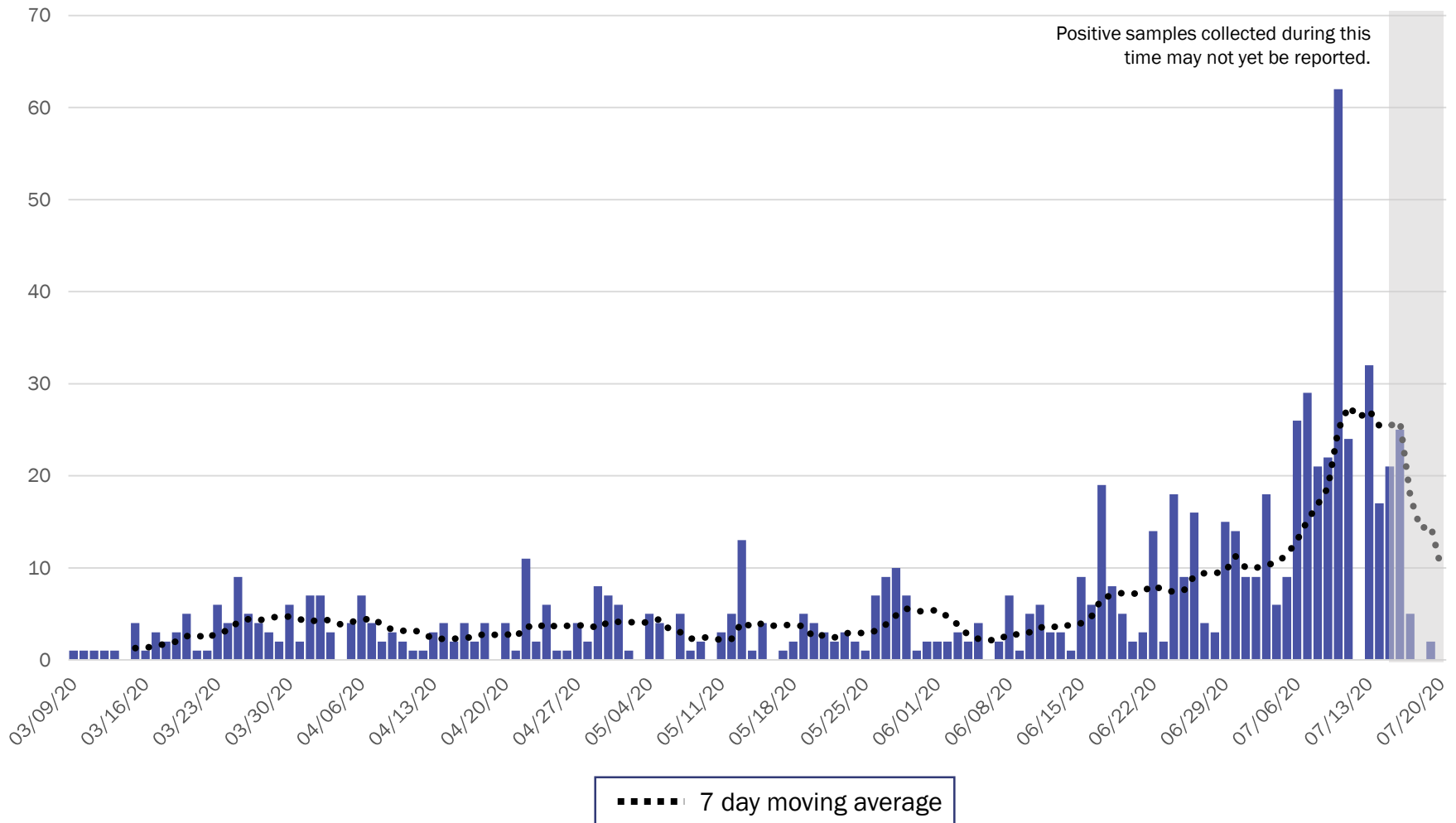


*Investing for tomorrow, delivering today.*

1190 S. St. Francis Drive • Santa Fe, NM 87505 • Phone: 505-827-2613 • Fax: 505-827-2530 • nmhealth.org



# Northeast Region Case Count by Collection Date with 7 Day Moving Average July 21, 2020



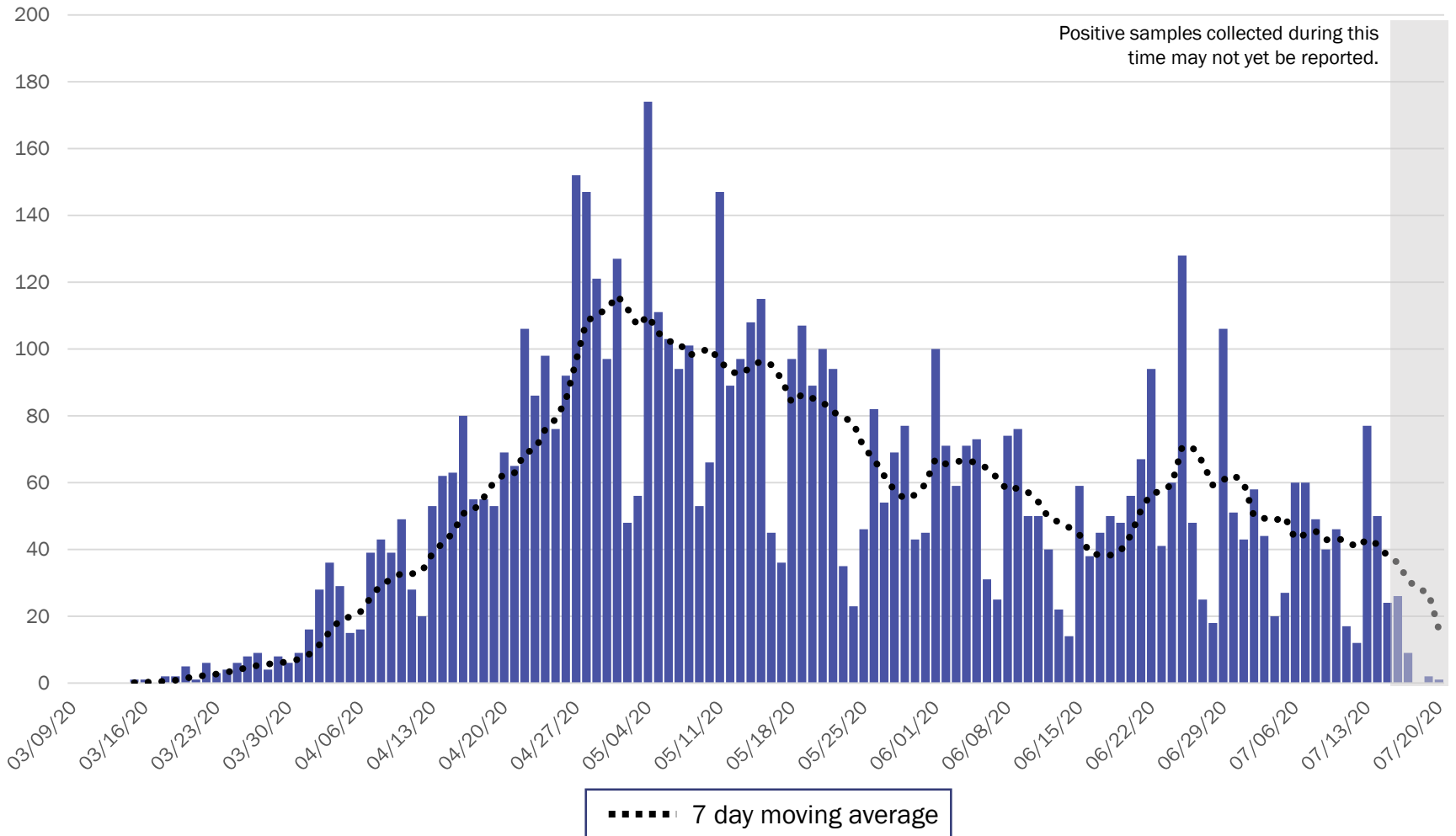
Source: Infectious Disease Epidemiology Bureau, Epidemiology and Response Division 7.21.2020, New Mexico Department of Health.



*Investing for tomorrow, delivering today.*

# Northwest Region Case Count by Collection Date with 7 Day Moving Average

## July 21, 2020

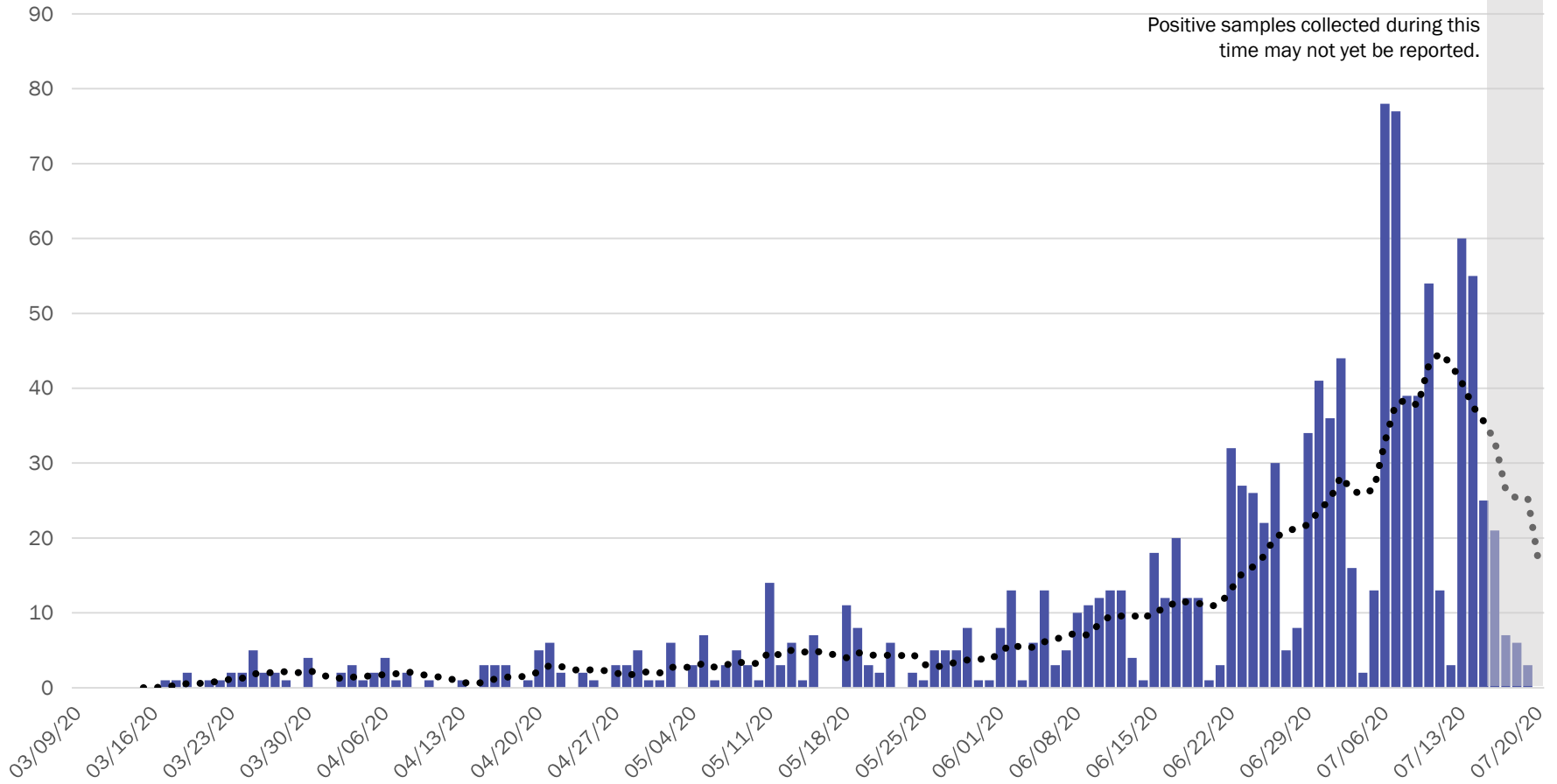


Source: Infectious Disease Epidemiology Bureau, Epidemiology and Response Division 7.21.2020, New Mexico Department of Health.



*Investing for tomorrow, delivering today.*

# Southeast Region Case Count by Collection Date with 7 Day Moving Average July 21, 2020



●●●●● 7 day moving average

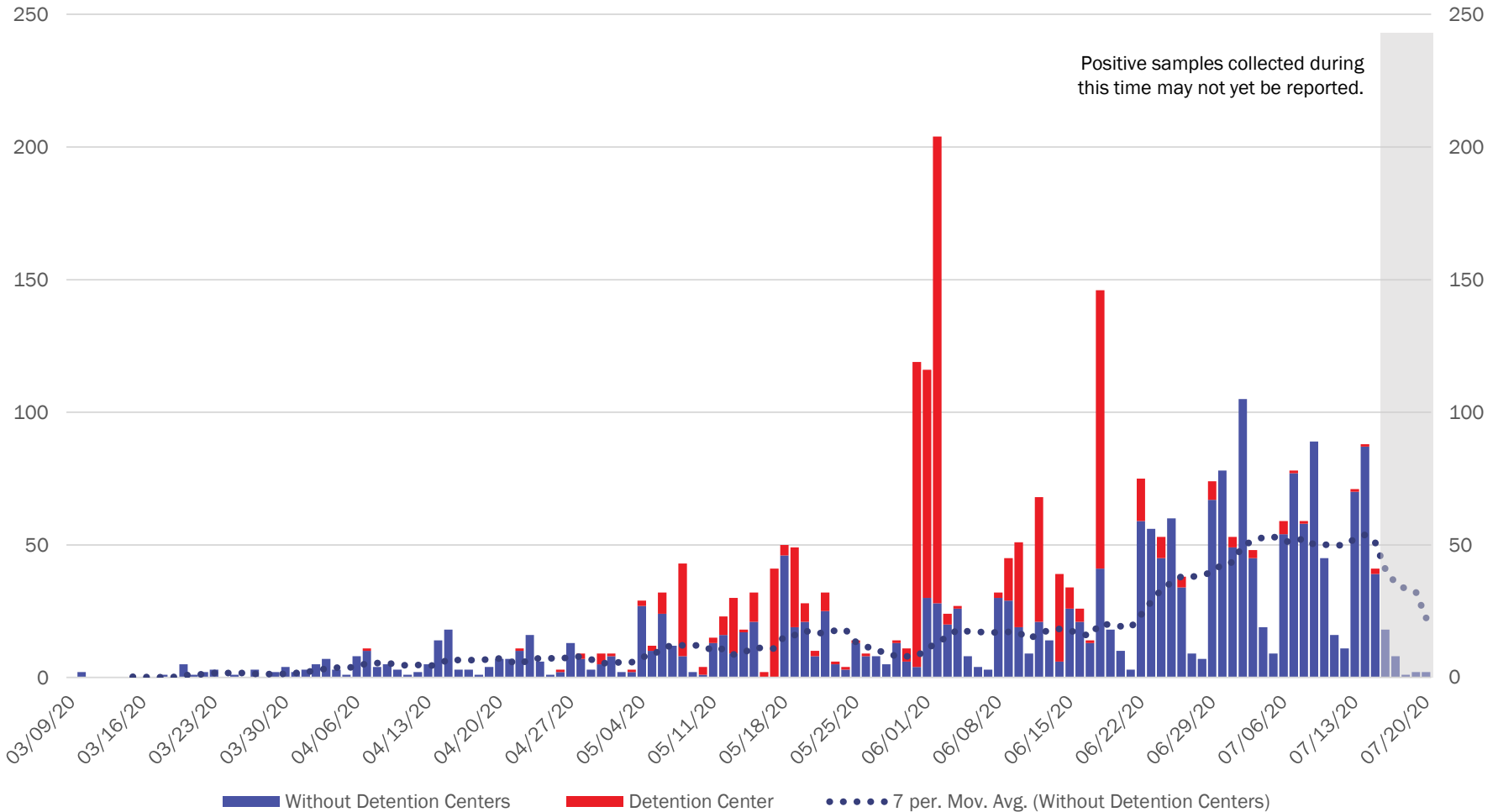
Source: Infectious Disease Epidemiology Bureau, Epidemiology and Response Division 7.21.2020, New Mexico Department of Health.



*Investing for tomorrow, delivering today.*

1190 S. St. Francis Drive • Santa Fe, NM 87505 • Phone: 505-827-2613 • Fax: 505-827-2530 • nmhealth.org

## Southwest Region Case Count by Collection Date with 7 Day Moving Average July 21, 2020

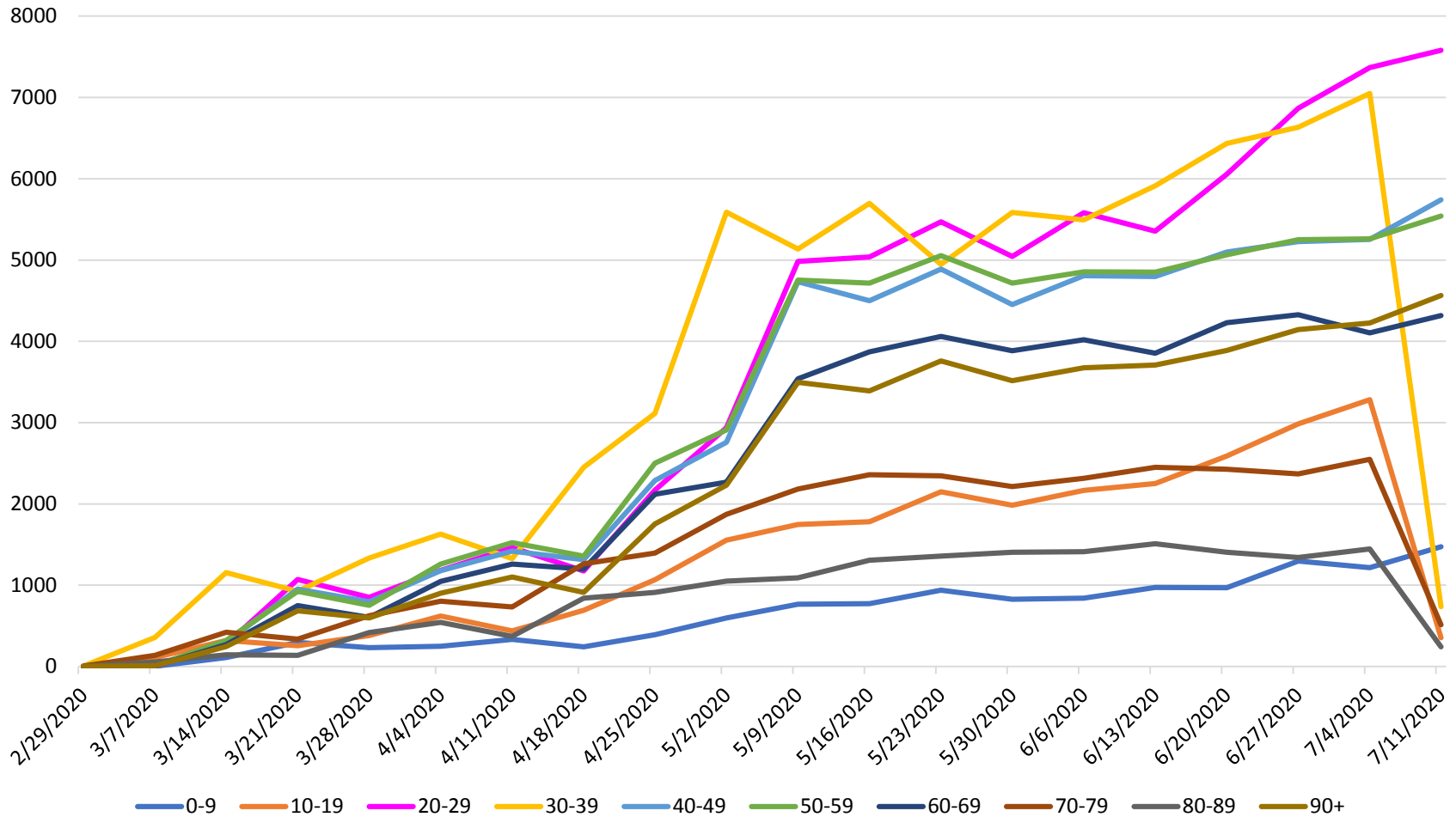


Source: Infectious Disease Epidemiology Bureau, Epidemiology and Response Division 7.21.2020, New Mexico Department of Health.



*Investing for tomorrow, delivering today.*

The number of tests performed has increased across all age groups, particularly the 20-29 year old age group in the last 3 weeks.



Testing data through July 15, 2020

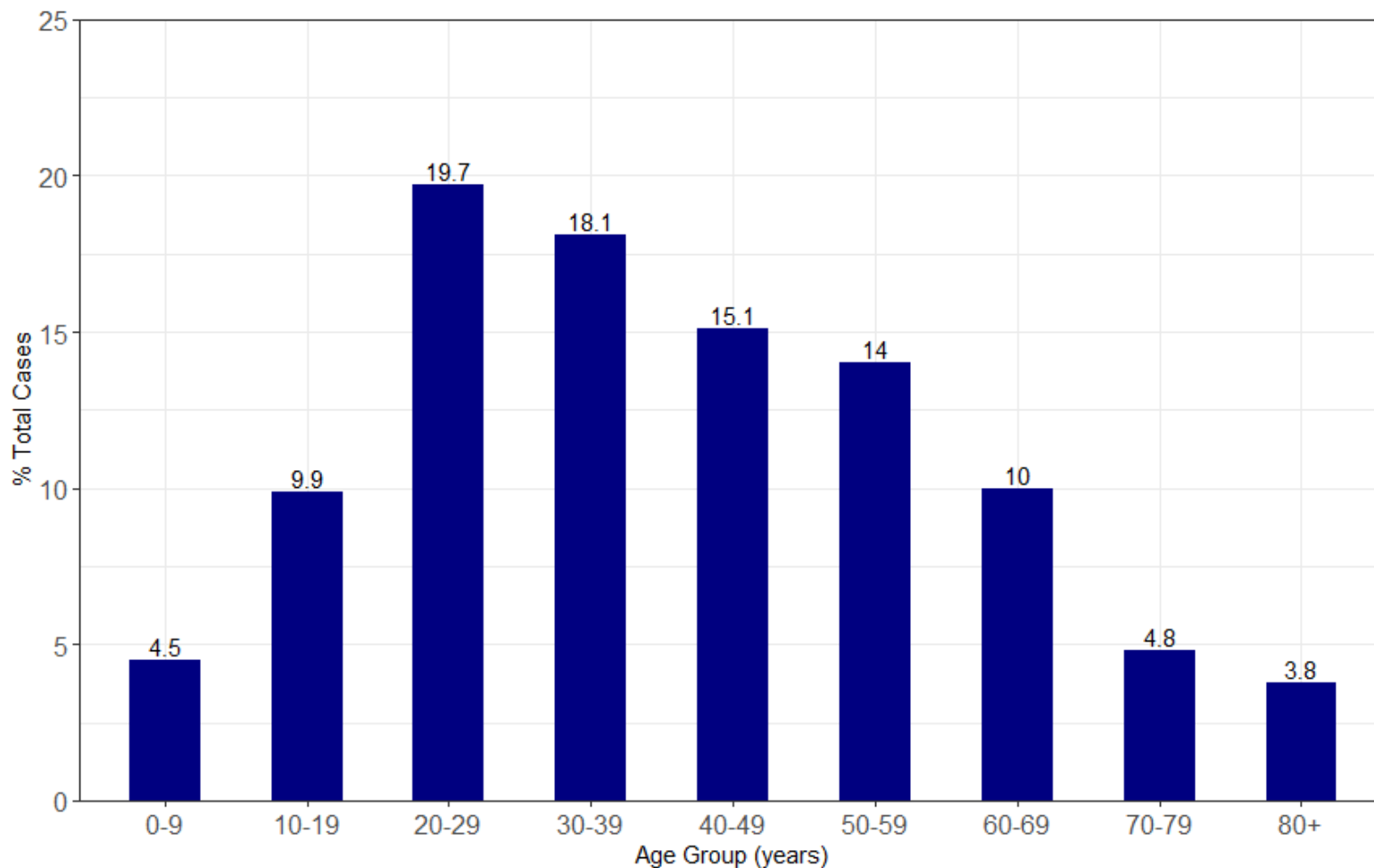


Investing for tomorrow, delivering today.

1190 S. St. Francis Drive • Santa Fe, NM 87505 • Phone: 505-827-2613 • Fax: 505-827-2530 • nmhealth.org

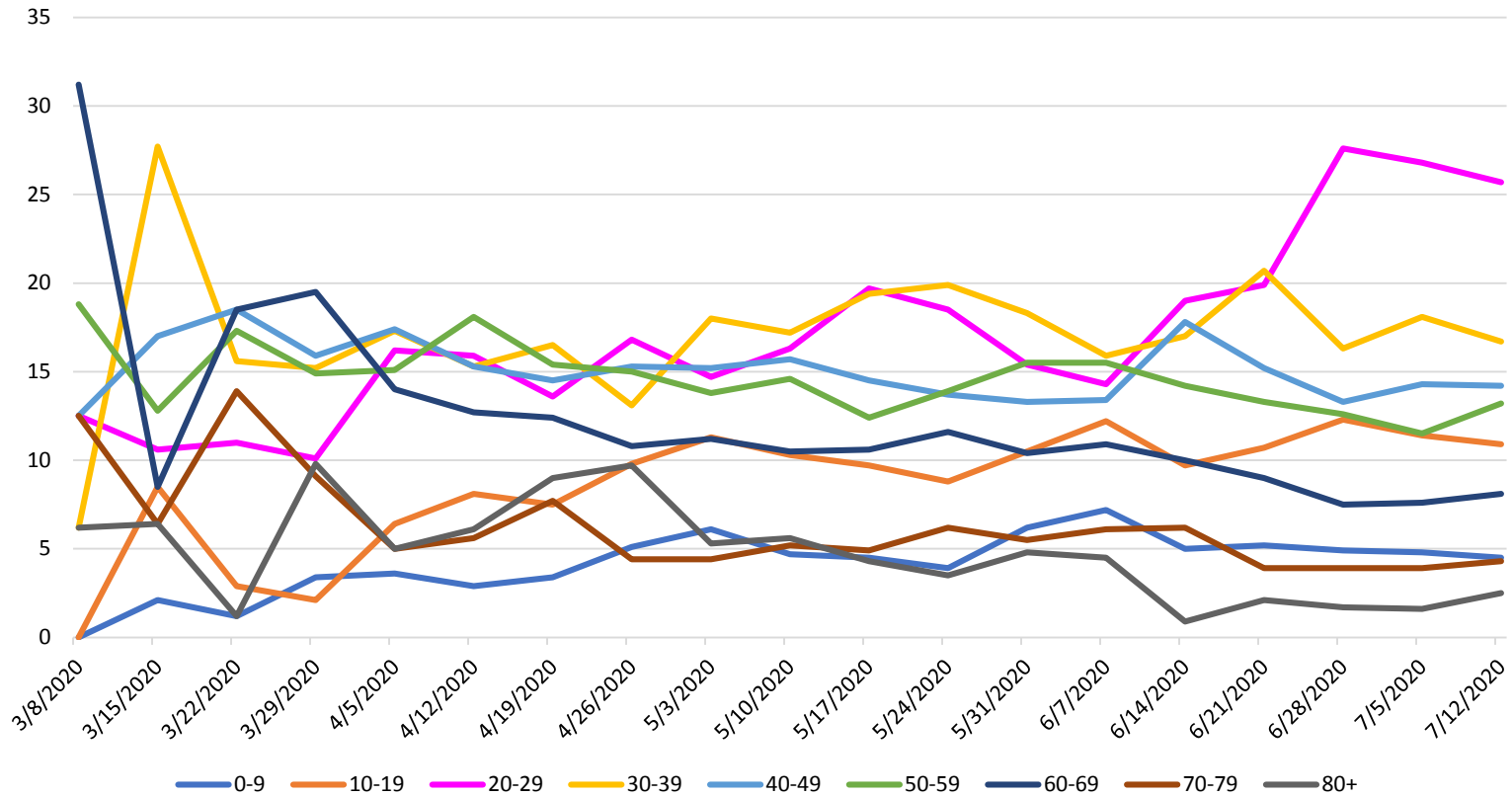
# The 20-29 and 30-39 year old age groups continue to make up the highest percentages of total cases

(excludes out-of-state, federal and state detention and correctional facilities)



As of July 20, 2020

The 20-29 year old age group has made up the largest percentage of new cases each week starting in mid-June and made up a little over 25% of new cases investigated last week.



\*Excludes out-of-state, federal and state detention and correctional facilities

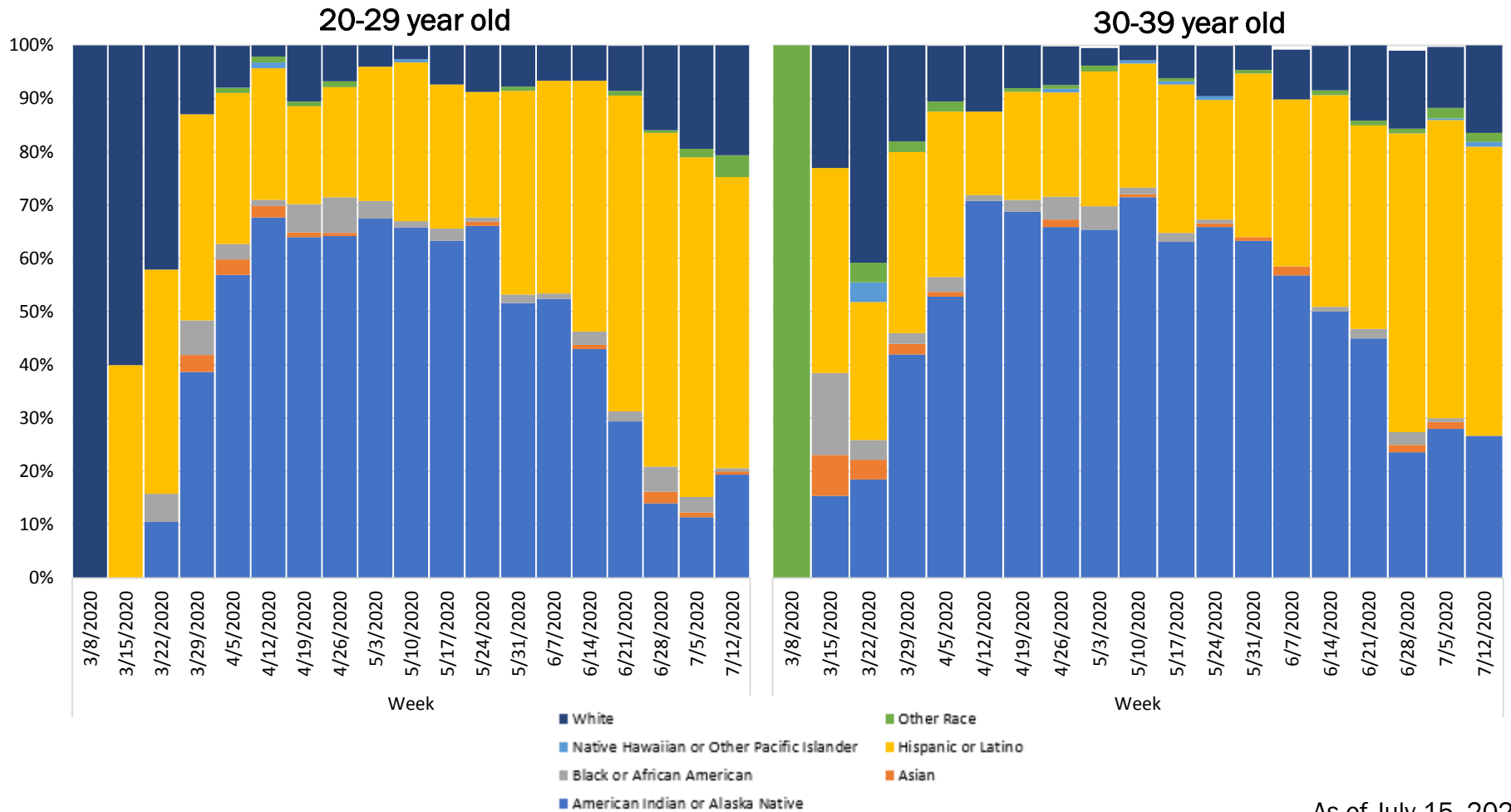
As of July 15, 2020



Investing for tomorrow, delivering today.

1190 S. St. Francis Drive • Santa Fe, NM 87505 • Phone: 505-827-2613 • Fax: 505-827-2530 • nmhealth.org

Since the beginning of June, there has been an increase in Hispanic or Latino cases and decline in American Indian or Alaska Native cases in the 20-29 year old and 30-39 year old age groups



As of July 15, 2020

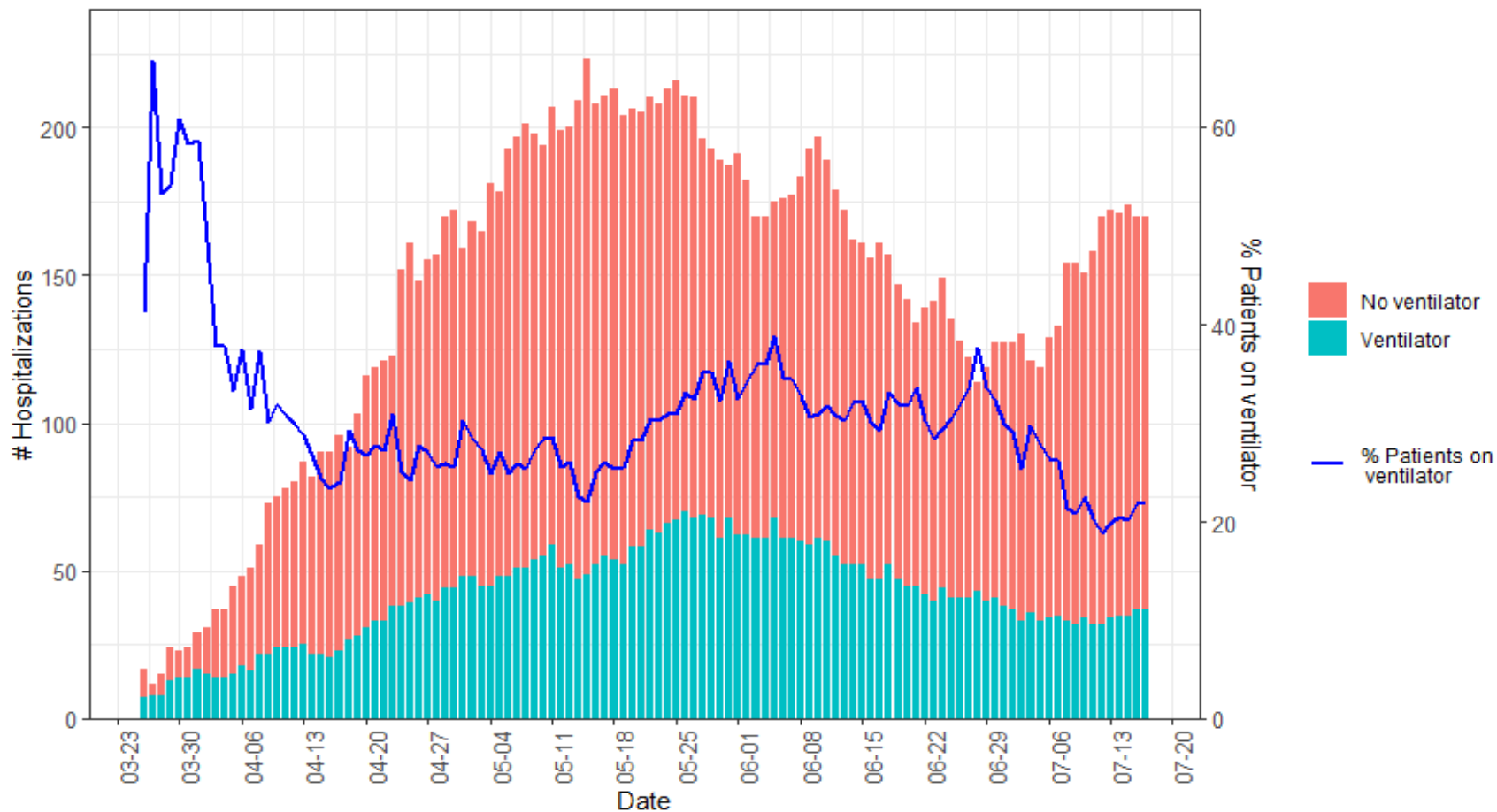


Investing for tomorrow, delivering today.

1190 S. St. Francis Drive • Santa Fe, NM 87505 • Phone: 505-827-2613 • Fax: 505-827-2530 • nmhealth.org

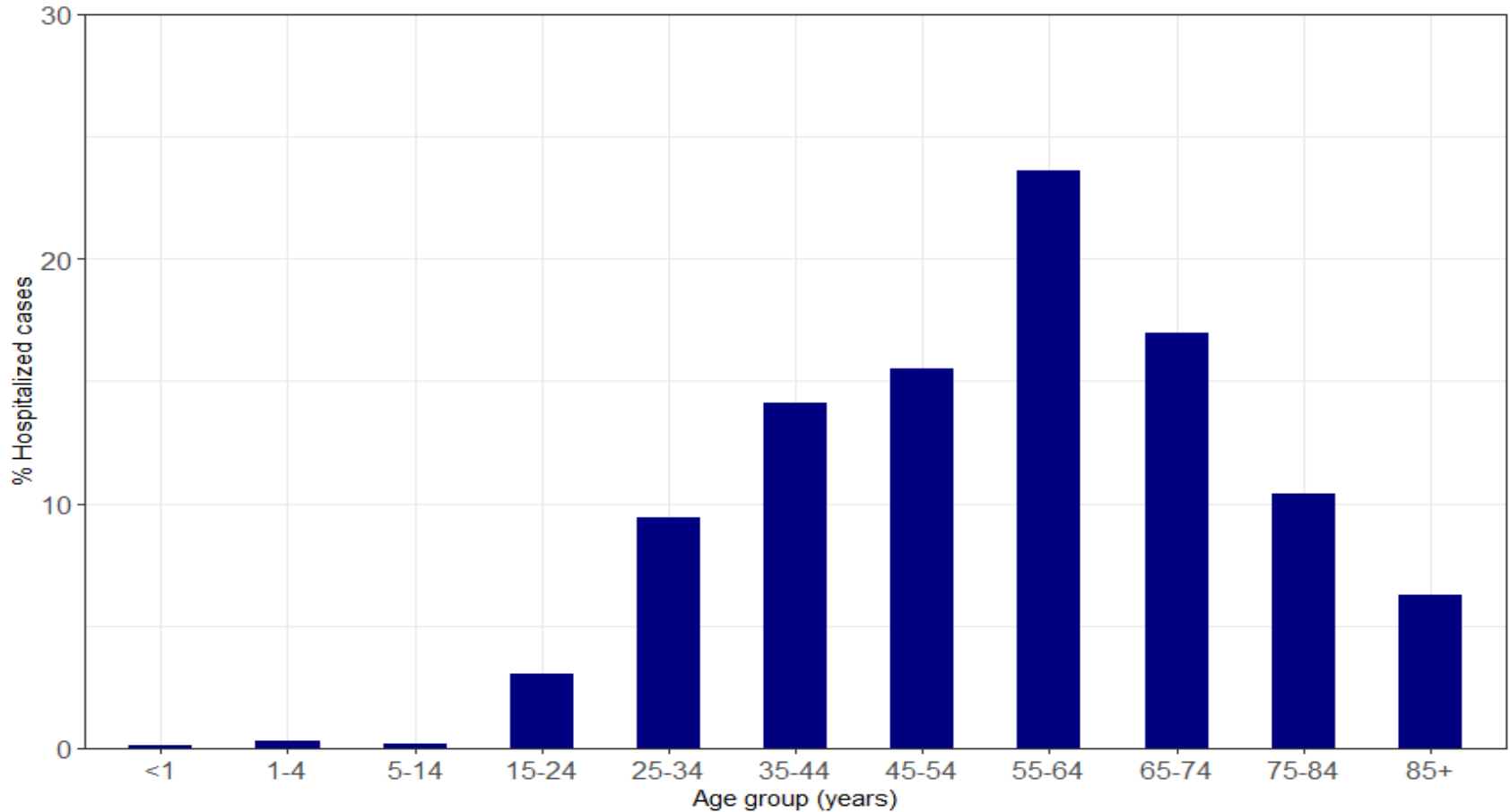


# Hospitalizations have increased since early July. Ventilator use has decreased and is currently at 22%.



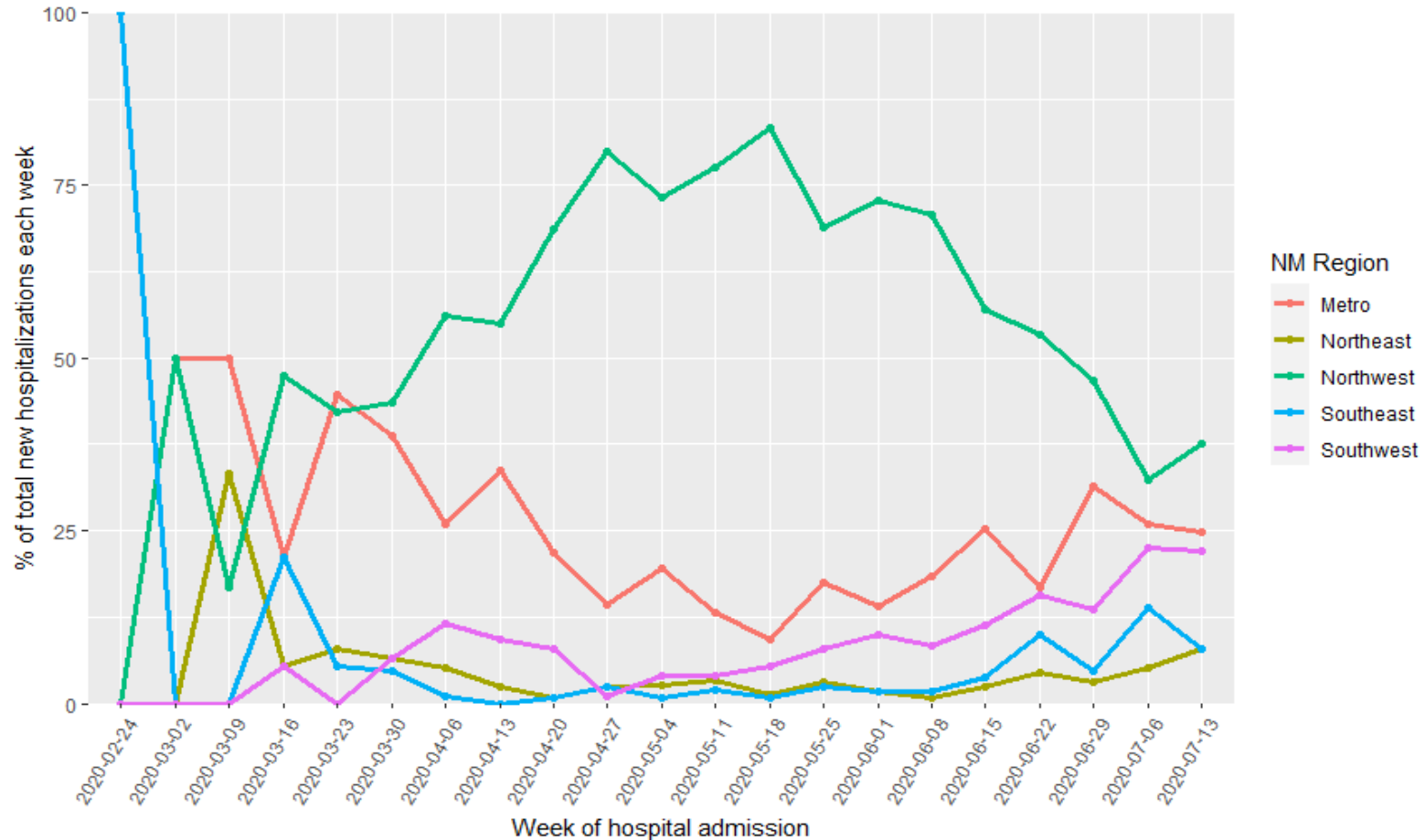
As of July 17, 2020

The 55-64 year old age group makes up the highest percentage of hospitalizations. There has not been much change in hospitalizations in each age group from week-to-week.

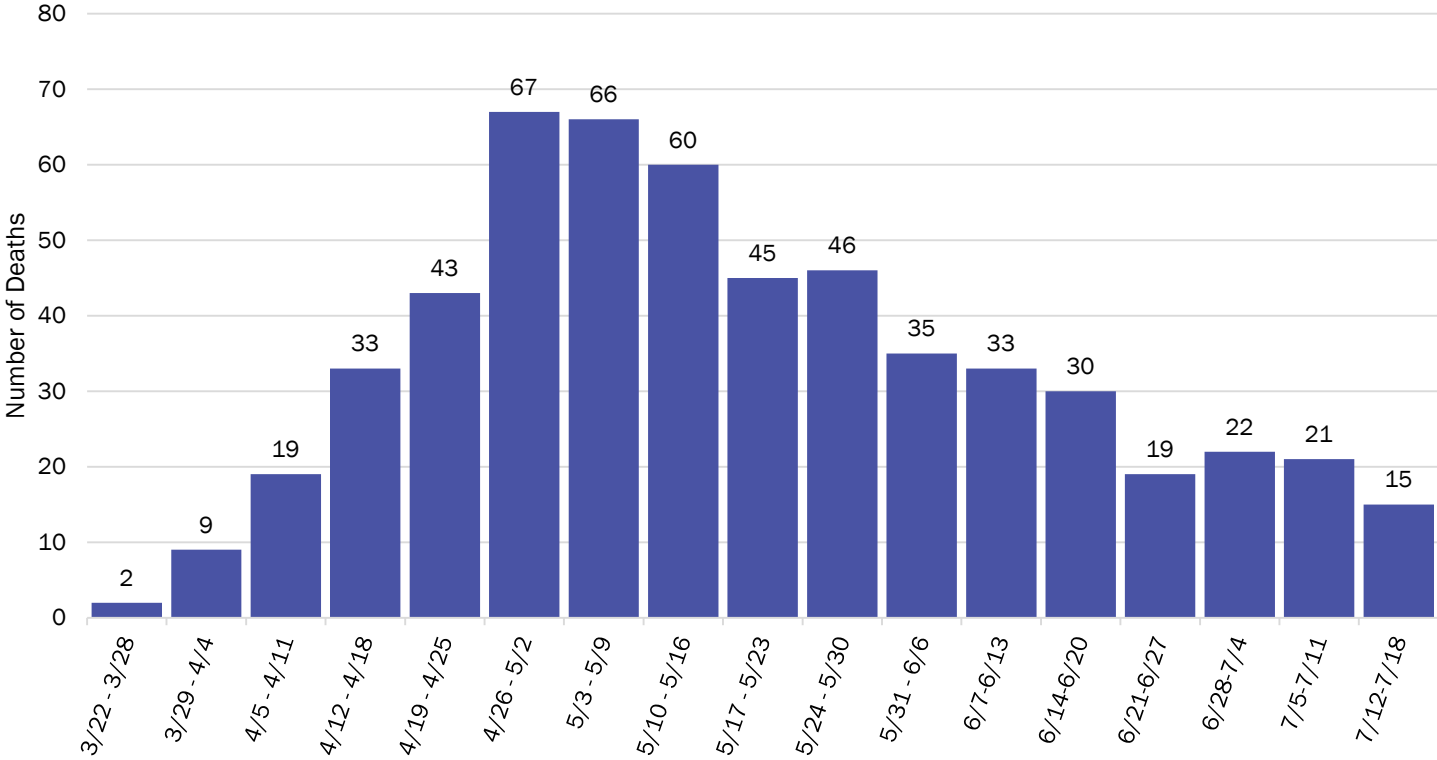


As of July 17, 2020

# Hospitalizations are declining in the NW Regions, but increasing in the Metro, SW, SE, and NE Regions

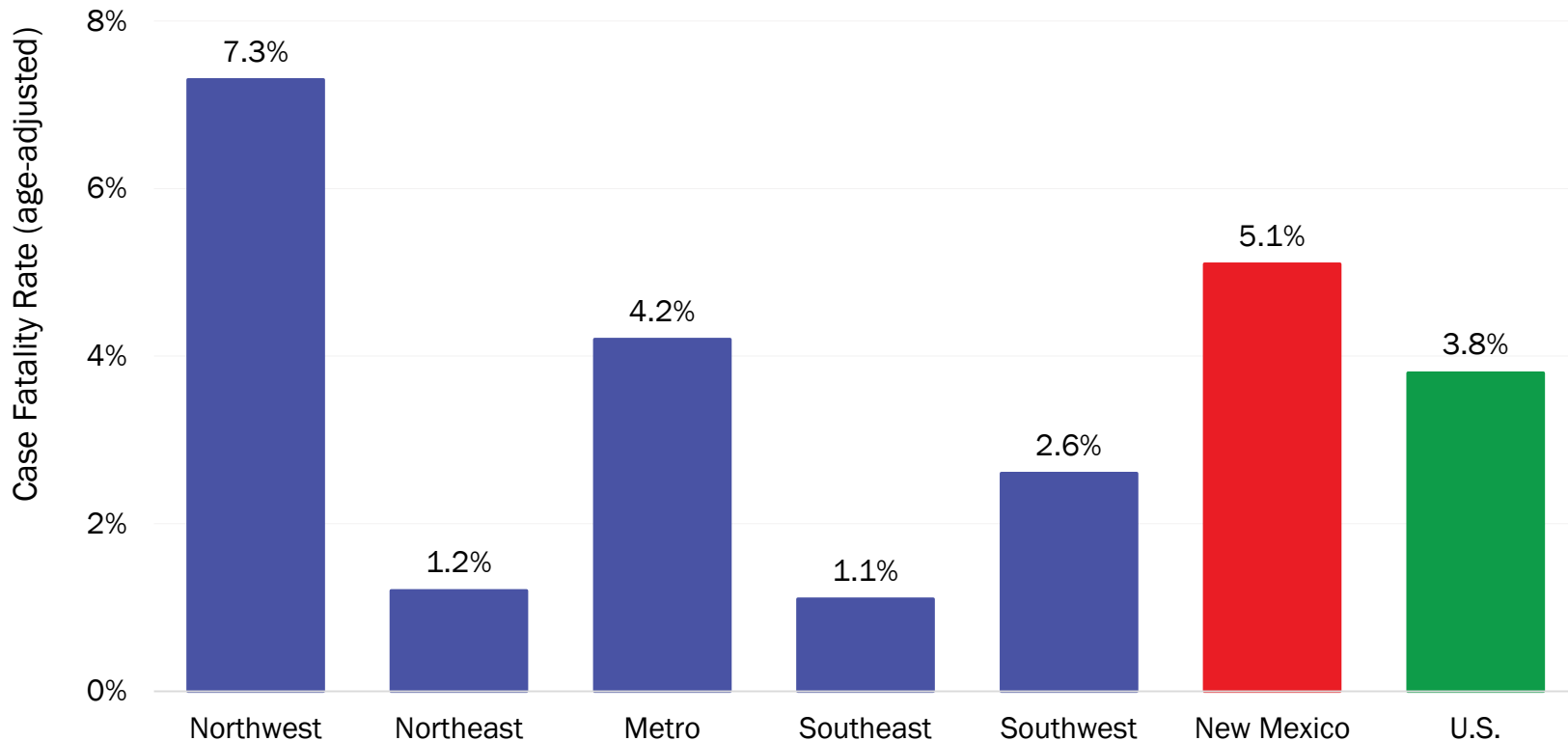


# COVID-19 deaths have been decreasing since May. Deaths may begin to increase due to the recent spikes in cases across New Mexico



Reporting through 7/17/2020

# Case fatality rates (CFR) across regions have slightly decreased since last week. The 75-84 and 85+ age groups continue to have the highest CFRs (21% and 39% respectively)



Rates have been age-adjusted to U.S. COVID-19 cases.

Source: Bureau of Vital Records and Health Statistics and Infectious Disease Epidemiology Bureau, Epidemiology and Response Division, reporting through 7.19.2020, New Mexico Department of Health.



*Investing for tomorrow, delivering today.*

# New Mexico Status Updates

- Case count: Statewide, the increase in daily case counts may be slowing down.
- Hospitalizations: After a period of decline, hospitalizations are increasing
- Deaths: Deaths have been declining since mid-May.
- Social distancing: Cell phone data suggests the rise in mobility of New Mexico residents may be slowing down.
- Contact tracing: The median time to quarantine for contacts identified last week was 4.5 days.

# Supplementary Slides

# Modeling Assumptions

Variable	Measured Value	Value as of 7.20.20
R_Effective	Actual Measured Daily Value by key county	R_eff=1.0
Positive Test Multiplier	Calculated by LANL	4.8
Hospitalization and Mortality	Actual rolling value / estimated number of total infected	Medical 0.3% ICU 0.2% Vent Rate 50% of ICU Crude Case Fatality Rate 4.8%
Length of Stay	Actual rolling value / estimated number of total infected	Medical 5 days ICU 14 days ICU on Vent 14 days