

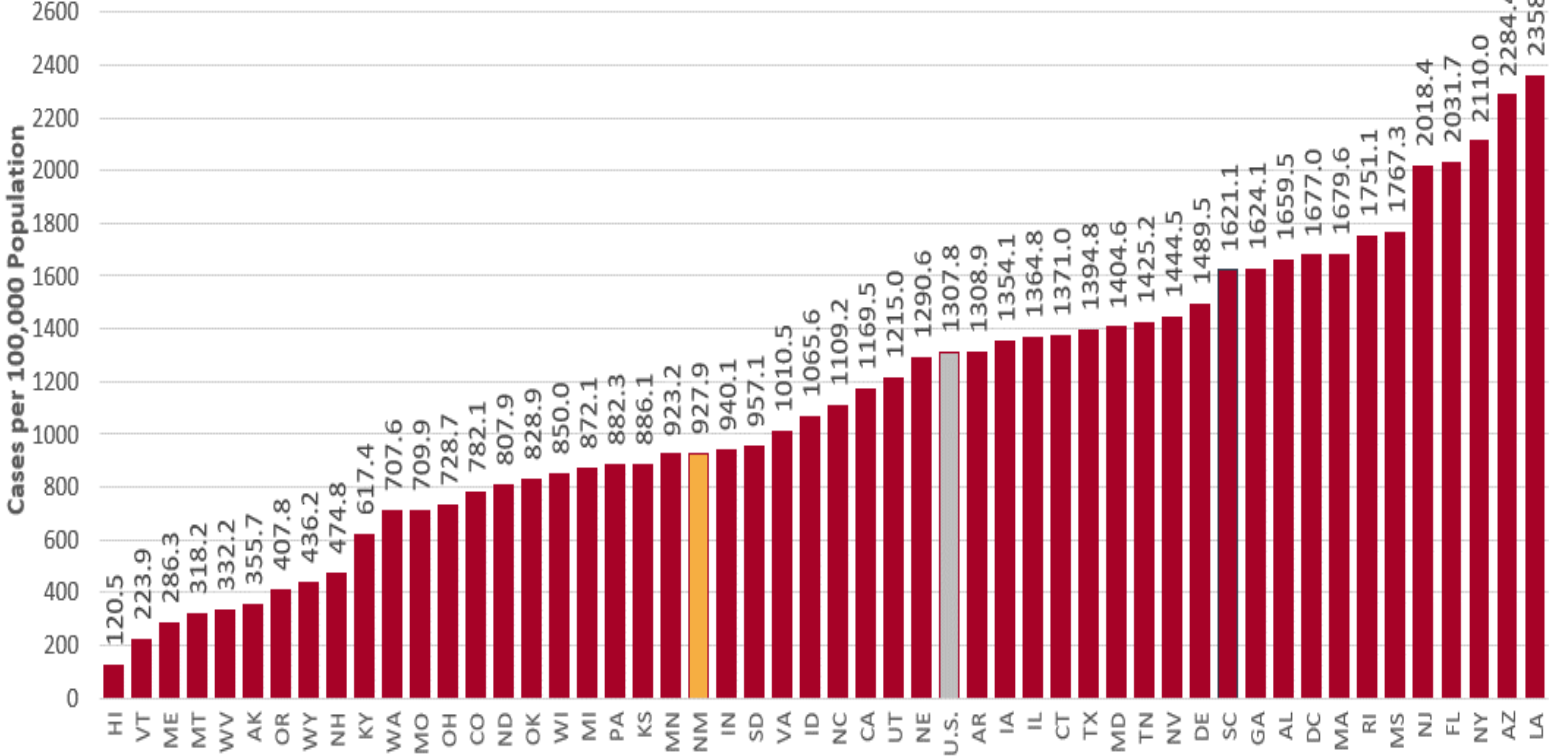
COVID-19 in New Mexico: Epidemiologic and Modeling Update

July 28, 2020

New Mexico has the 30th highest prevalence in the United States

Infection Rate: COVID-19 Cases, Year to Date, by U.S. States

data downloaded Tuesday AM, July 28, 2020



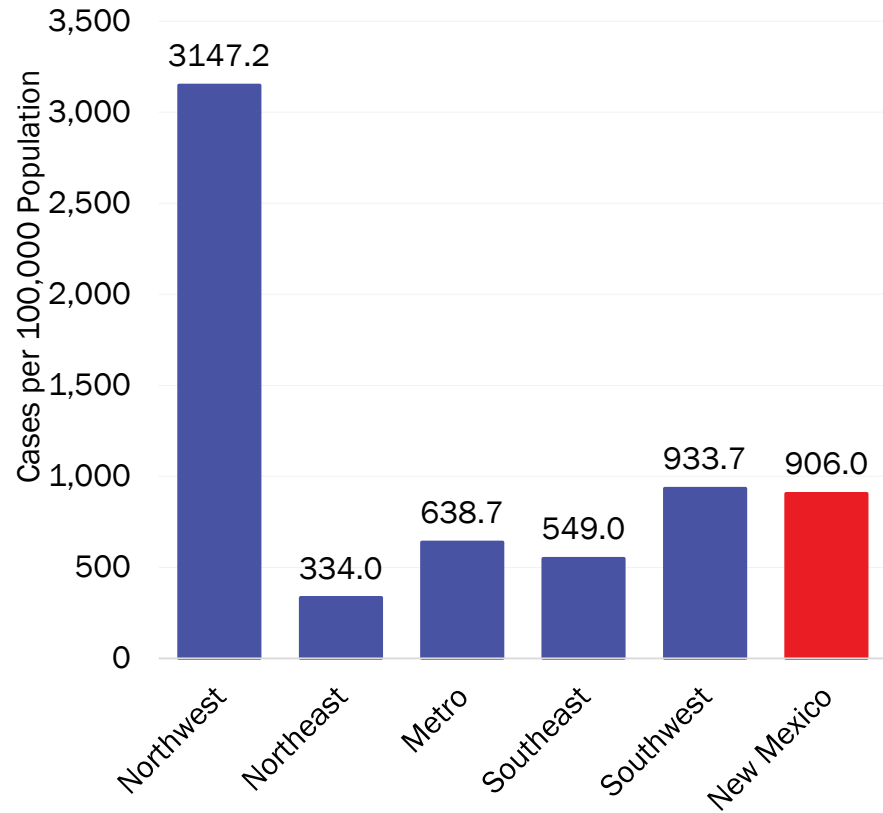
Source: Cases, Johns Hopkins University Coronavirus Resource Center. Population estimates, National Center for Health Statistics, CDC.



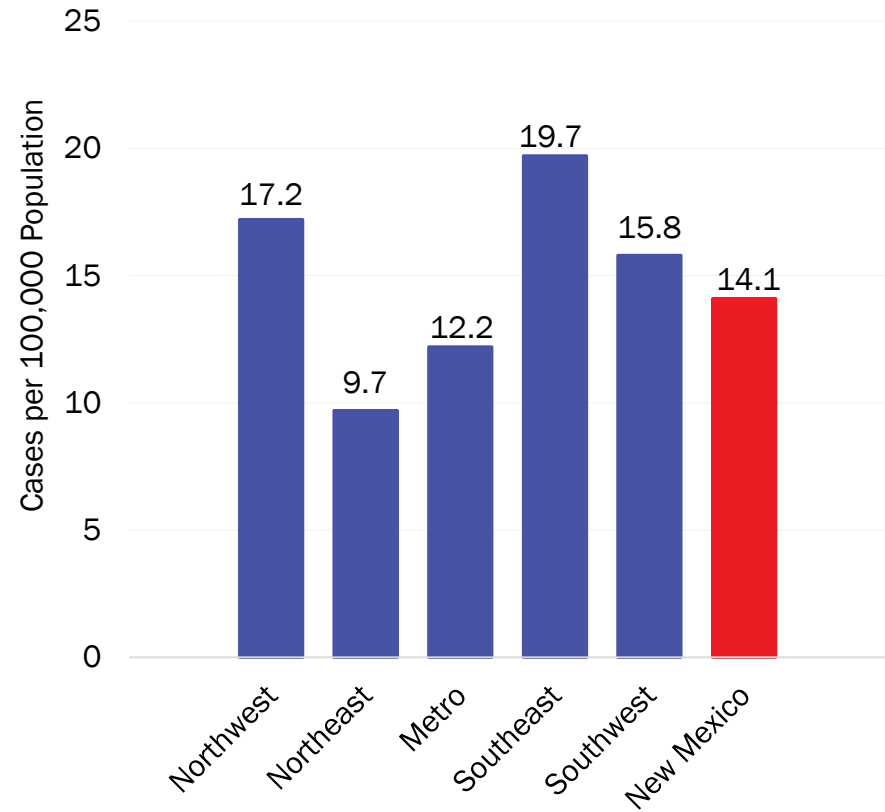
Investing for tomorrow, delivering today.

COVID-19 prevalence per 100,000 population

Year-to-Date



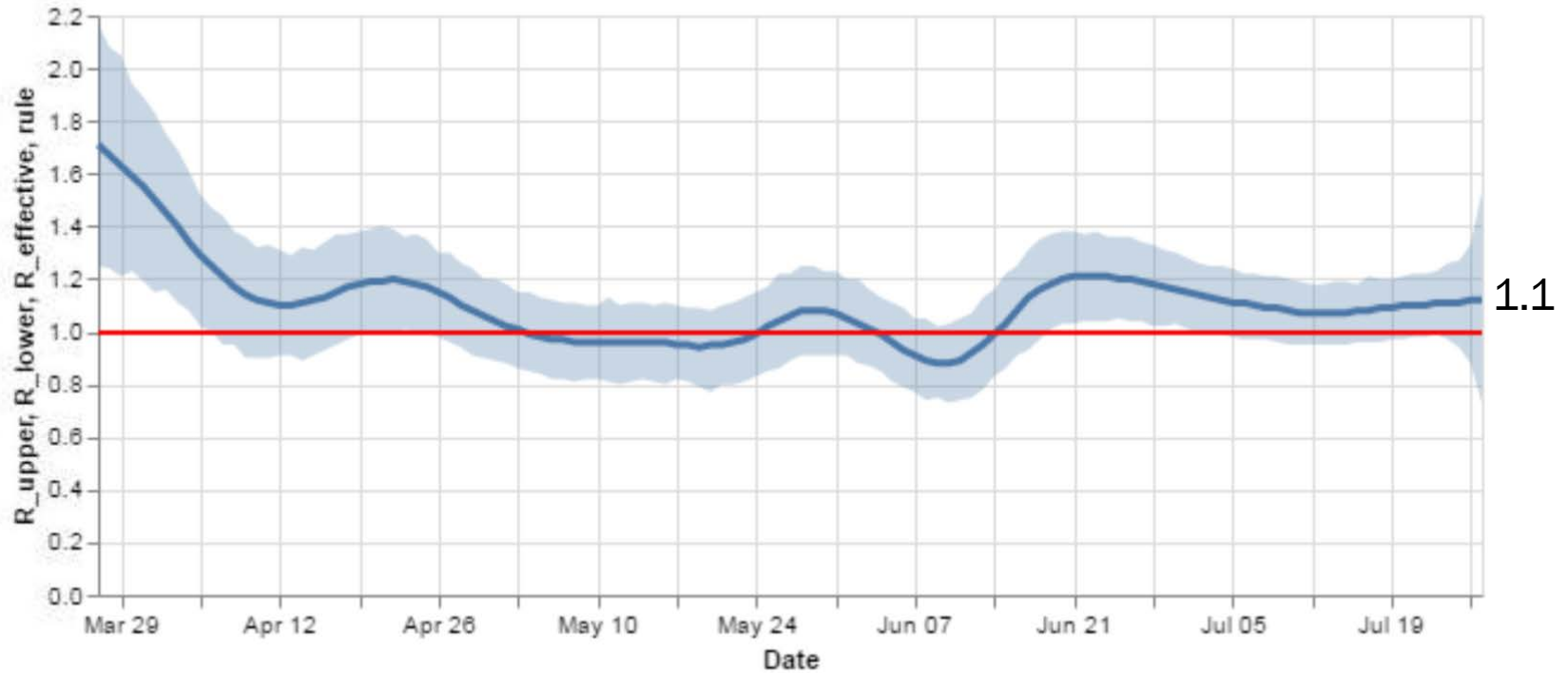
New cases (Last 7 days)



Source: Infectious Disease Epidemiology Bureau, Epidemiology and Response Division 7.26.2020, New Mexico Department of Health. Population estimates, UNM Geospatial and Population Studies Program.

Statewide R-effective has increased to 1.1.

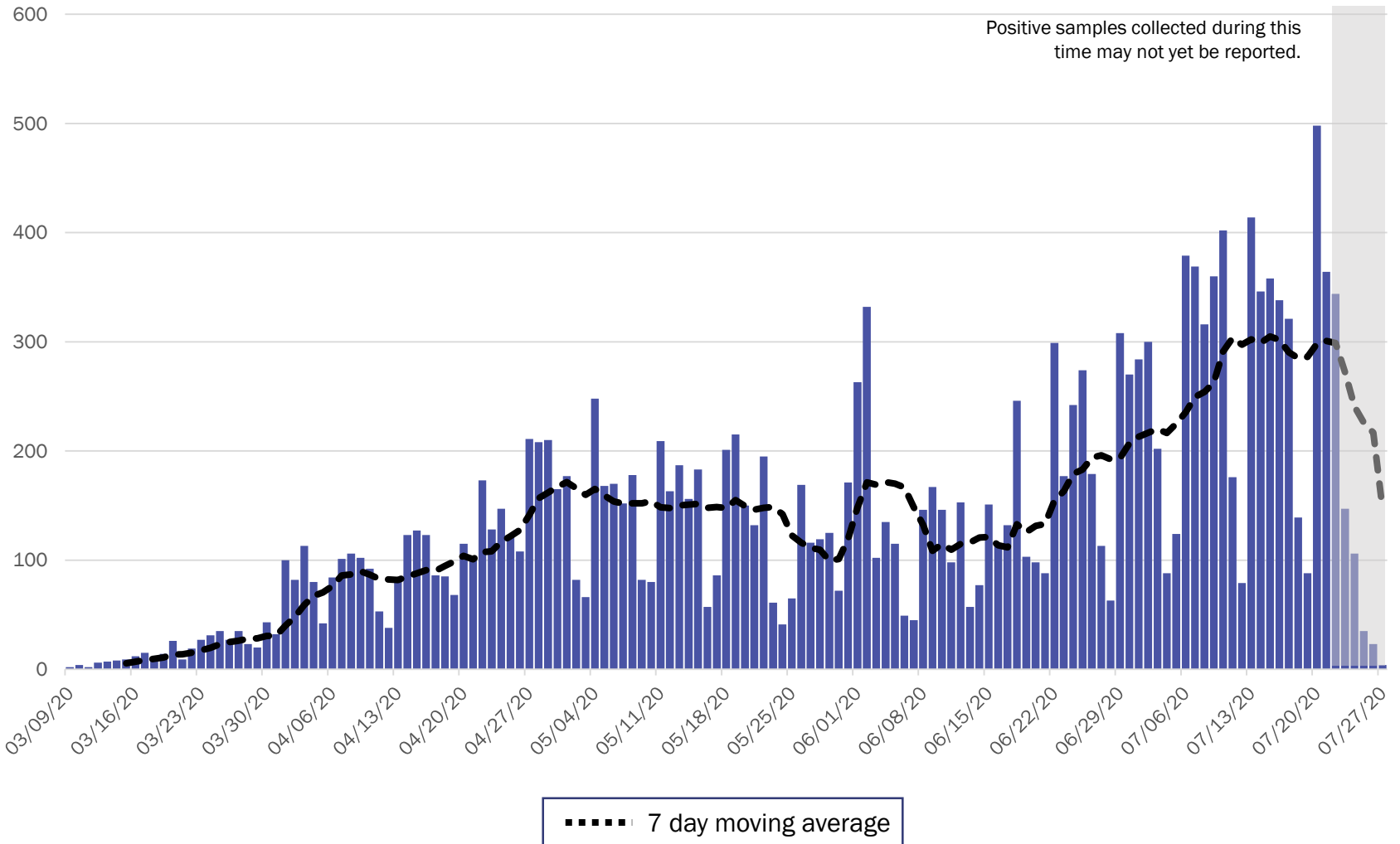
R_effective over time, STATE



1.1

Courtesy of Presbyterian Healthcare Services – July 28, 2020.

New Mexico COVID-19 Cases by Date of Specimen Collection – 7/28/20



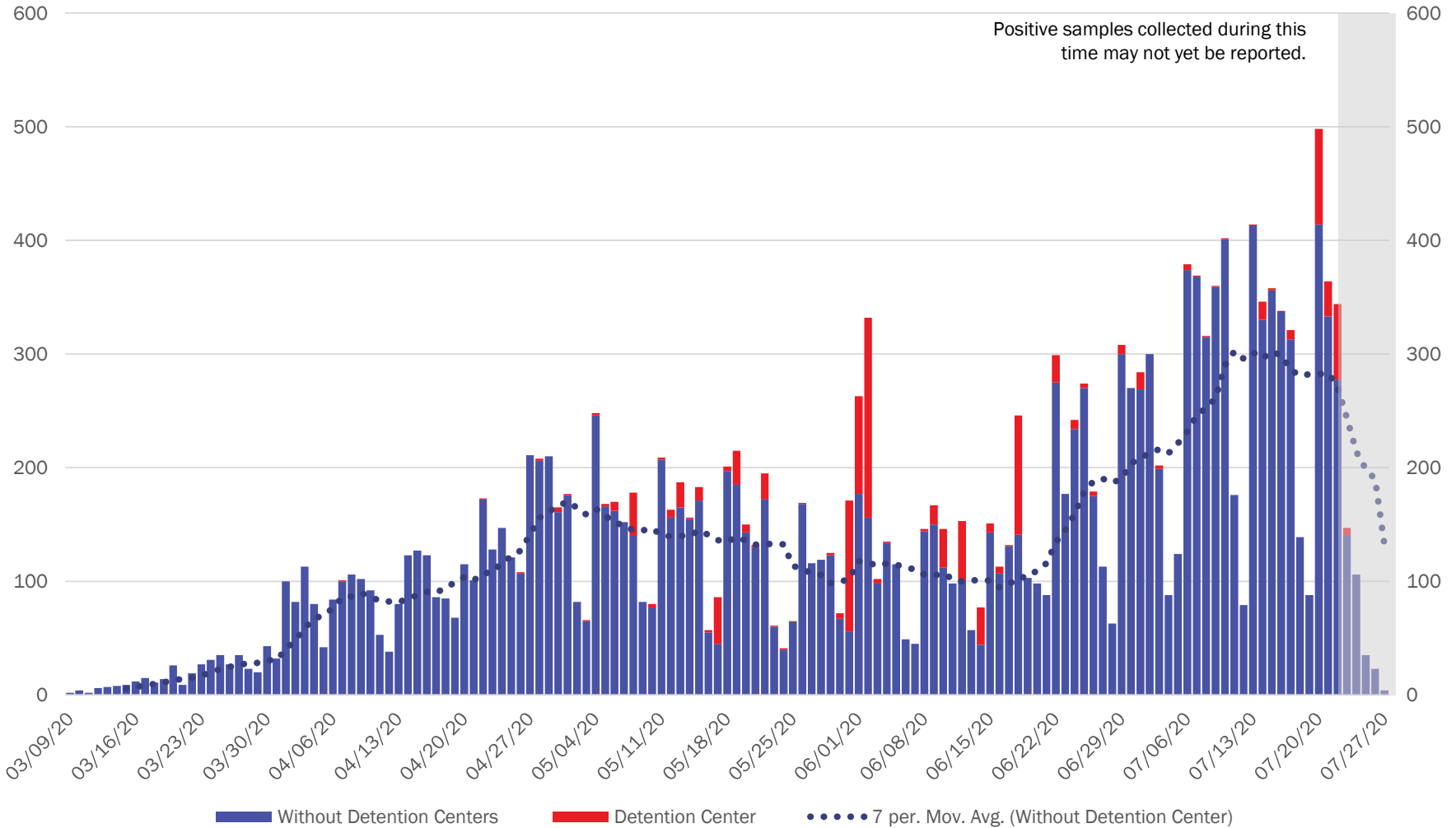
Source: Infectious Disease Epidemiology Bureau, Epidemiology and Response Division 7.28.2020, New Mexico Department of Health.



Investing for tomorrow, delivering today.

1190 S. St. Francis Drive • Santa Fe, NM 87505 • Phone: 505-827-2613 • Fax: 505-827-2530 • nmhealth.org

New Mexico COVID-19 Cases by Date of Specimen Collection – 7/28/20



Source: Infectious Disease Epidemiology Bureau, Epidemiology and Response Division 7.28.2020, New Mexico Department of Health.



Investing for tomorrow, delivering today.

1190 S. St. Francis Drive • Santa Fe, NM 87505 • Phone: 505-827-2613 • Fax: 505-827-2530 • nmhealth.org

Key

- Low Level Endemic <1.0
- Approaching Low Level Endemic 1.0-1.05
- Requiring further mitigation >1.05

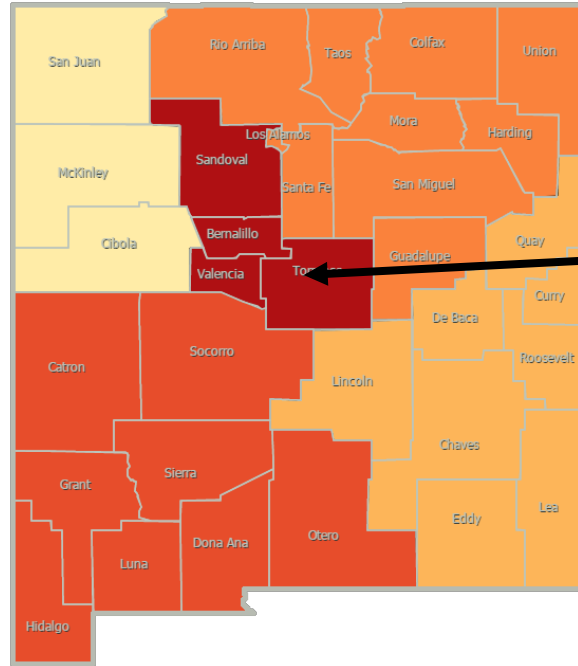
Northwest
R_effective 1.6 ↑

Northeast
R_effective 0.9 ↓

Metro
R_effective 0.9 ↓

Southwest
R_effective 1.2 ↑

Southeast
R_effective 1.2 ↑



As of July 20, 2020

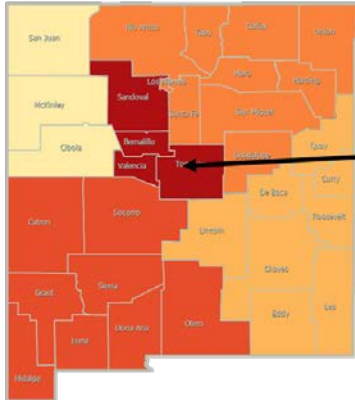
Northwest
R_effective 0.8 ↓

Northeast
R_effective 1.2 ↑

Metro
R_effective 1.1 =

Southwest
R_effective 0.9 ↓

Southeast
R_effective 1.0 =



Region	R-effective	95% Confidence Interval
State	1.1	[0.7, 1.5]
Metro	0.9	[0.3, 1.5]
Northeast	0.9	[0.0, 2.4]
Northwest	1.6	[0.7, 2.5]
Southeast	1.2	[0.4, 2.1]
Southwest	1.2	[0.5, 2.0]

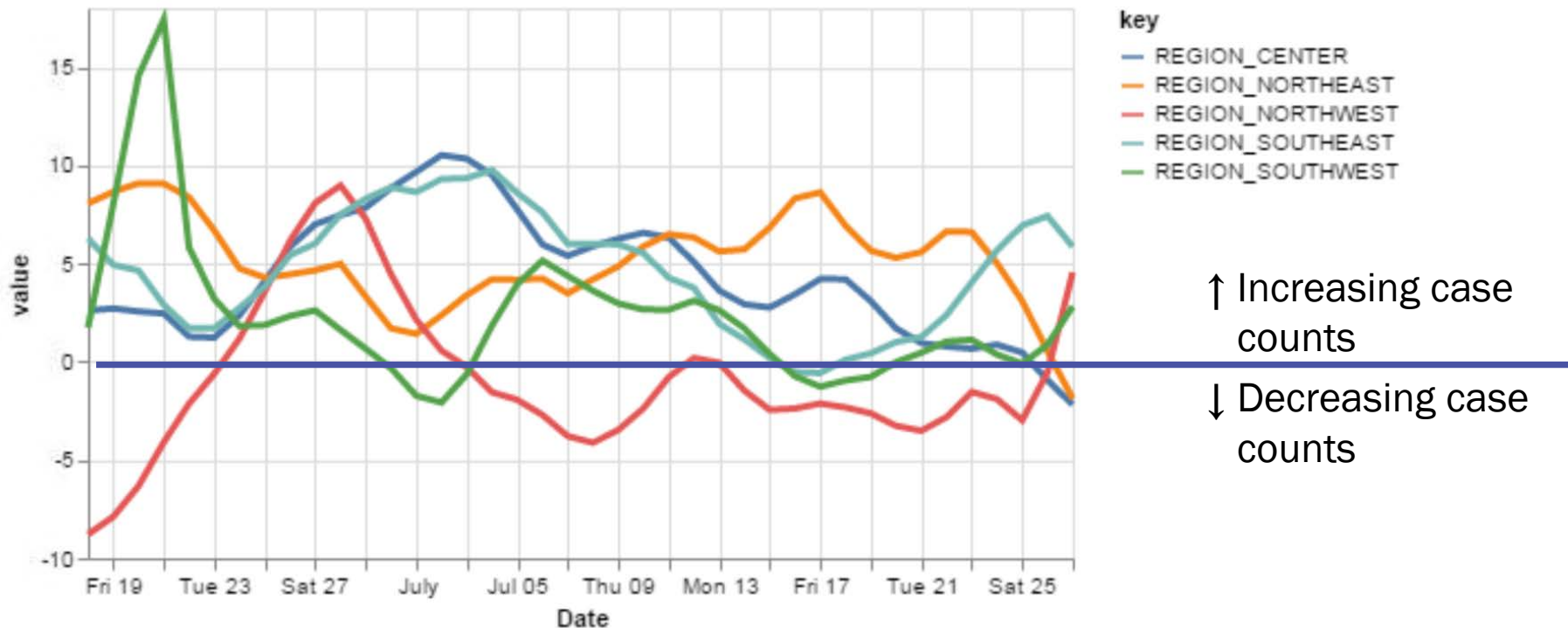
Courtesy of Presbyterian Healthcare Services – July 28, 2020.



Investing for tomorrow, delivering today.

The Northwest has had a steep increase in daily case counts.

14-day relative growth rate (%), Regions



Courtesy of Presbyterian Healthcare Services – July 28, 2020.

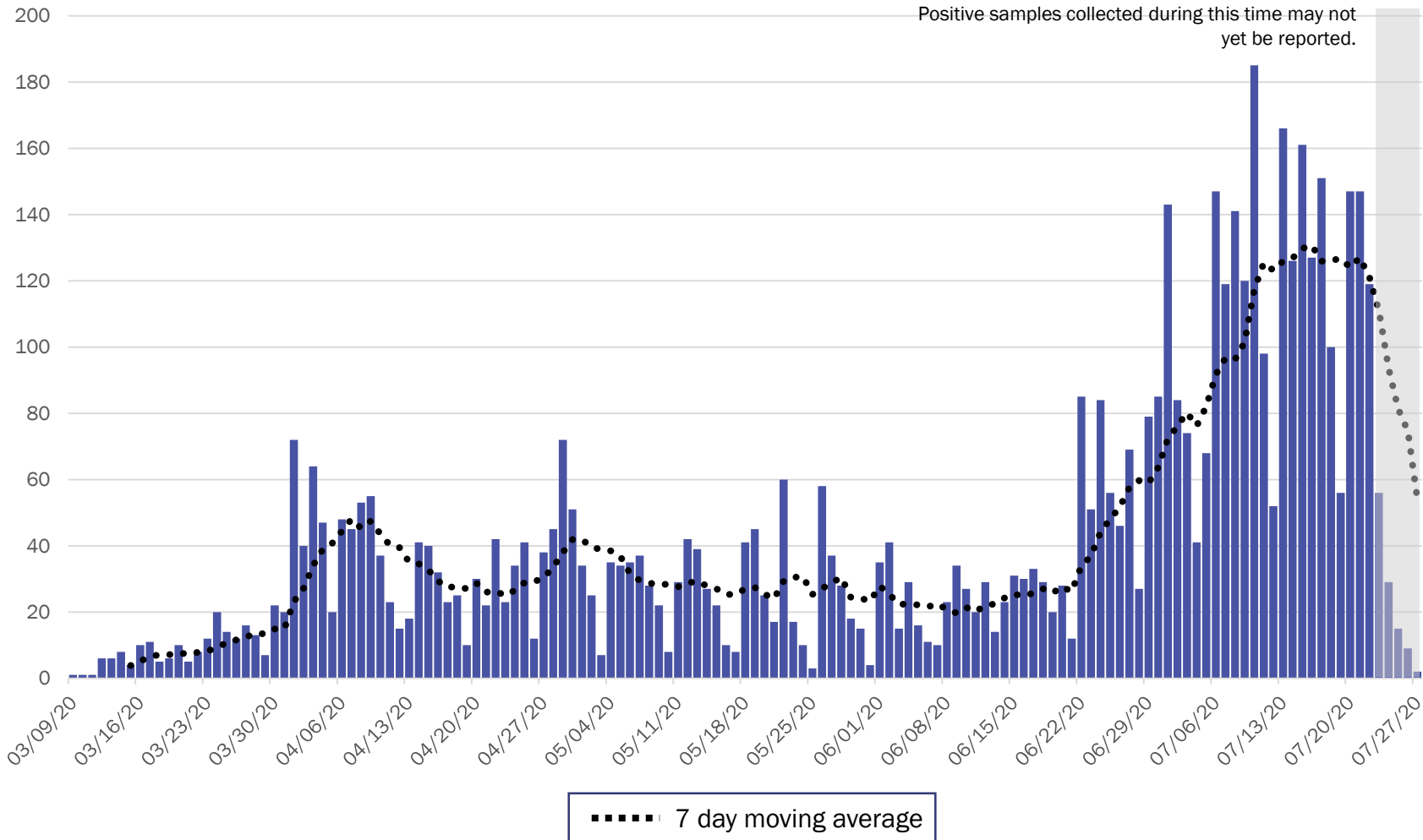


Investing for tomorrow, delivering today.



1190 S. St. Francis Drive • Santa Fe, NM 87505 • Phone: 505-827-2613 • Fax: 505-827-2530 • nmhealth.org

Metro Region Case Count by Collection Date with 7 Day Moving Average July 28, 2020



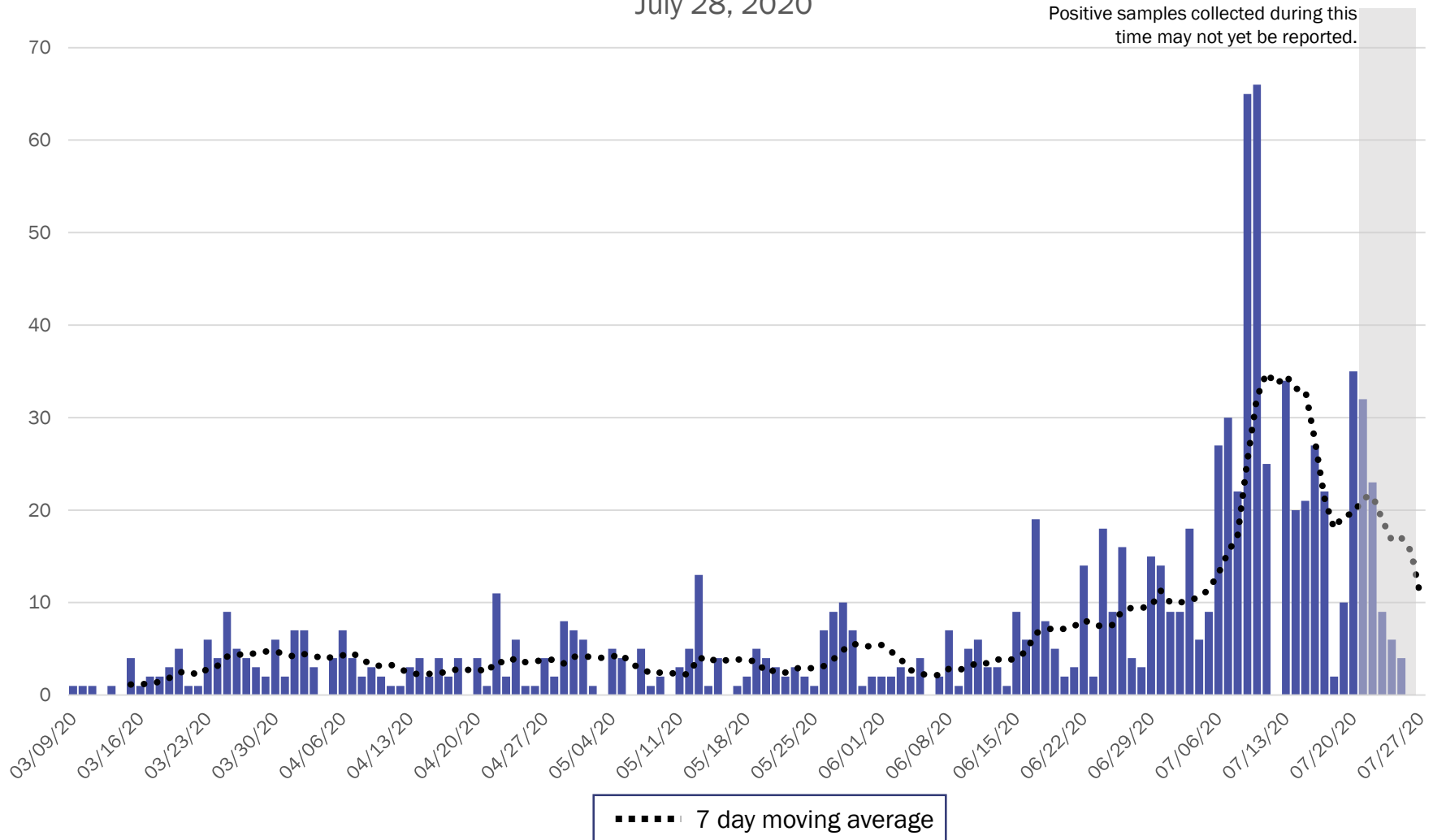
Source: Infectious Disease Epidemiology Bureau, Epidemiology and Response Division 7.28.2020, New Mexico Department of Health.



Investing for tomorrow, delivering today.

Northeast Region Case Count by Collection Date with 7 Day Moving Average

July 28, 2020



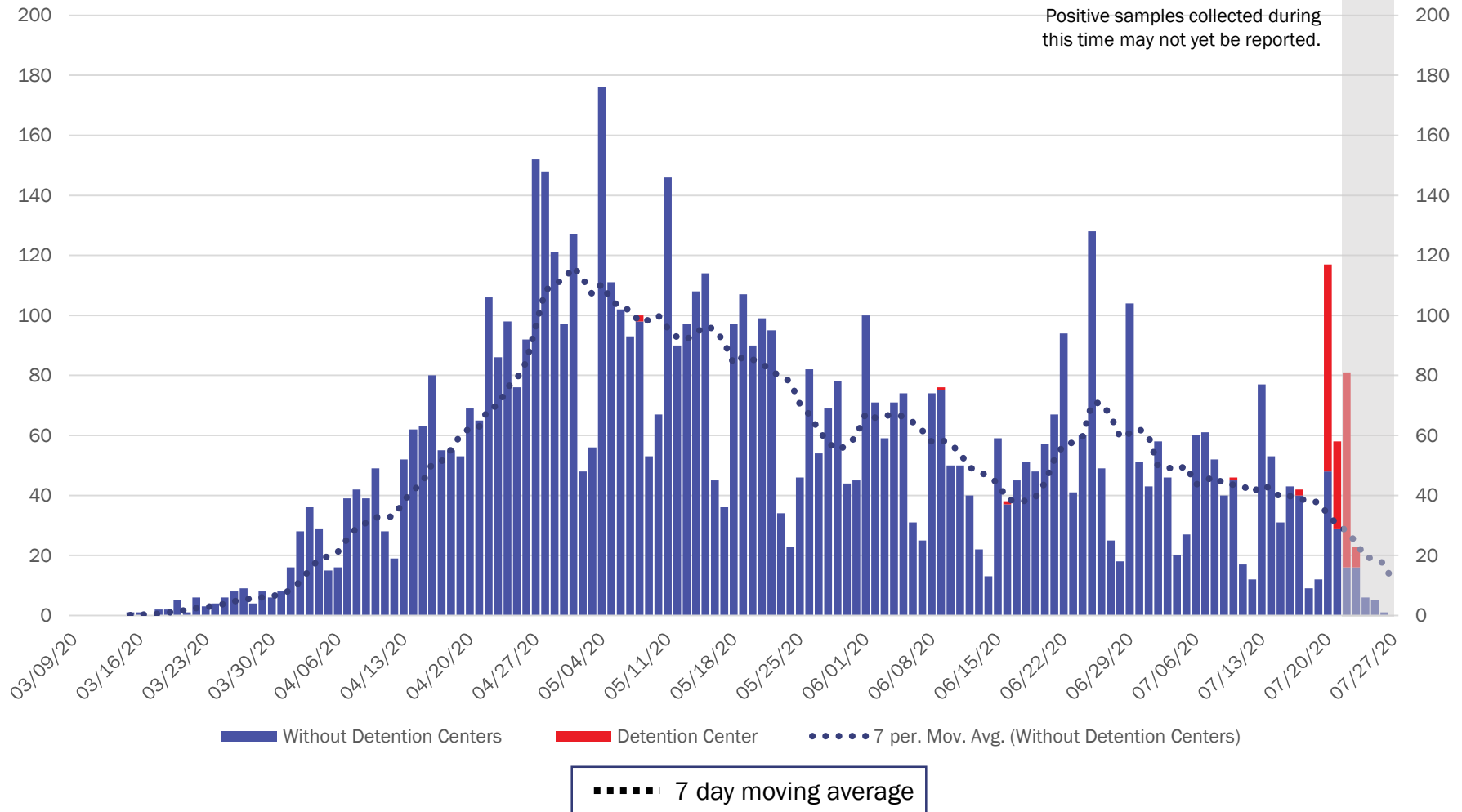
Source: Infectious Disease Epidemiology Bureau, Epidemiology and Response Division 7.28.2020, New Mexico Department of Health.



Investing for tomorrow, delivering today.

1190 S. St. Francis Drive • Santa Fe, NM 87505 • Phone: 505-827-2613 • Fax: 505-827-2530 • nmhealth.org

Northwest Region Case Count by Collection Date with 7 Day Moving Average July 28, 2020



Source: Infectious Disease Epidemiology Bureau, Epidemiology and Response Division 7.28.2020, New Mexico Department of Health.

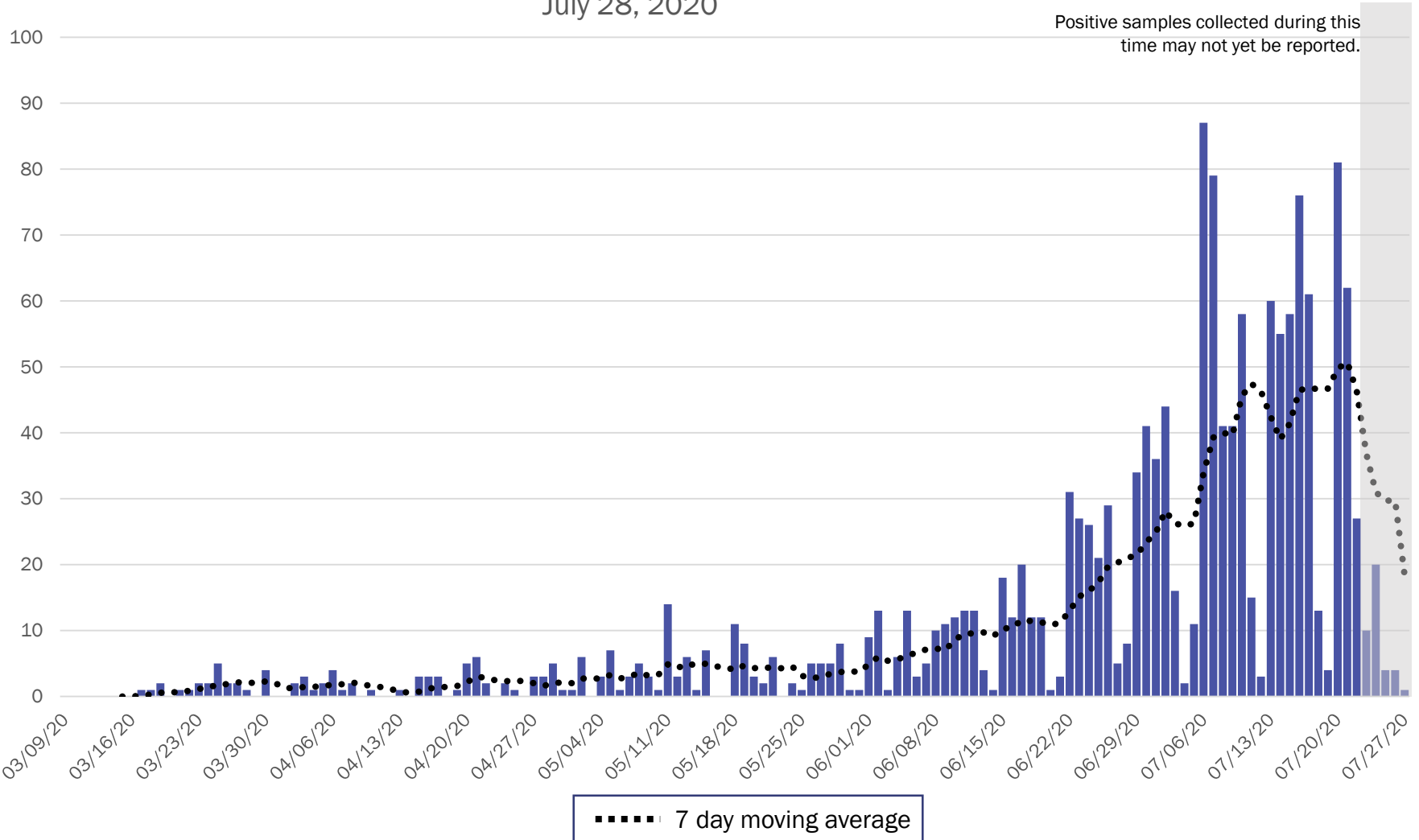


Investing for tomorrow, delivering today.

1190 S. St. Francis Drive • Santa Fe, NM 87505 • Phone: 505-827-2613 • Fax: 505-827-2530 • nmhealth.org

Southeast Region Case Count by Collection Date with 7 Day Moving Average

July 28, 2020



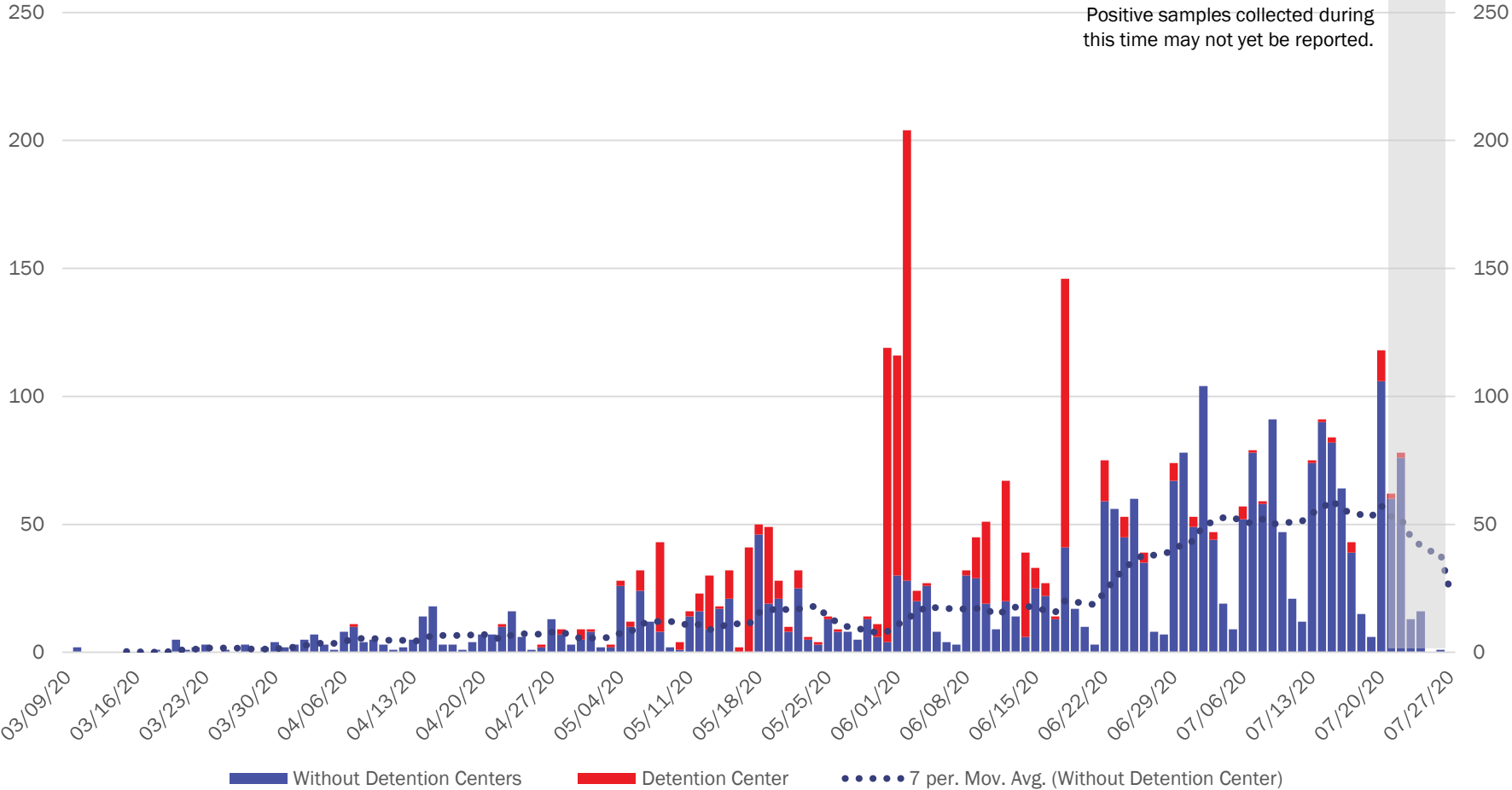
Source: Infectious Disease Epidemiology Bureau, Epidemiology and Response Division 7.28.2020, New Mexico Department of Health.



Investing for tomorrow, delivering today.

1190 S. St. Francis Drive • Santa Fe, NM 87505 • Phone: 505-827-2613 • Fax: 505-827-2530 • nmhealth.org

Southwest Region Case Count by Collection Date with 7 Day Moving Average July 28, 2020



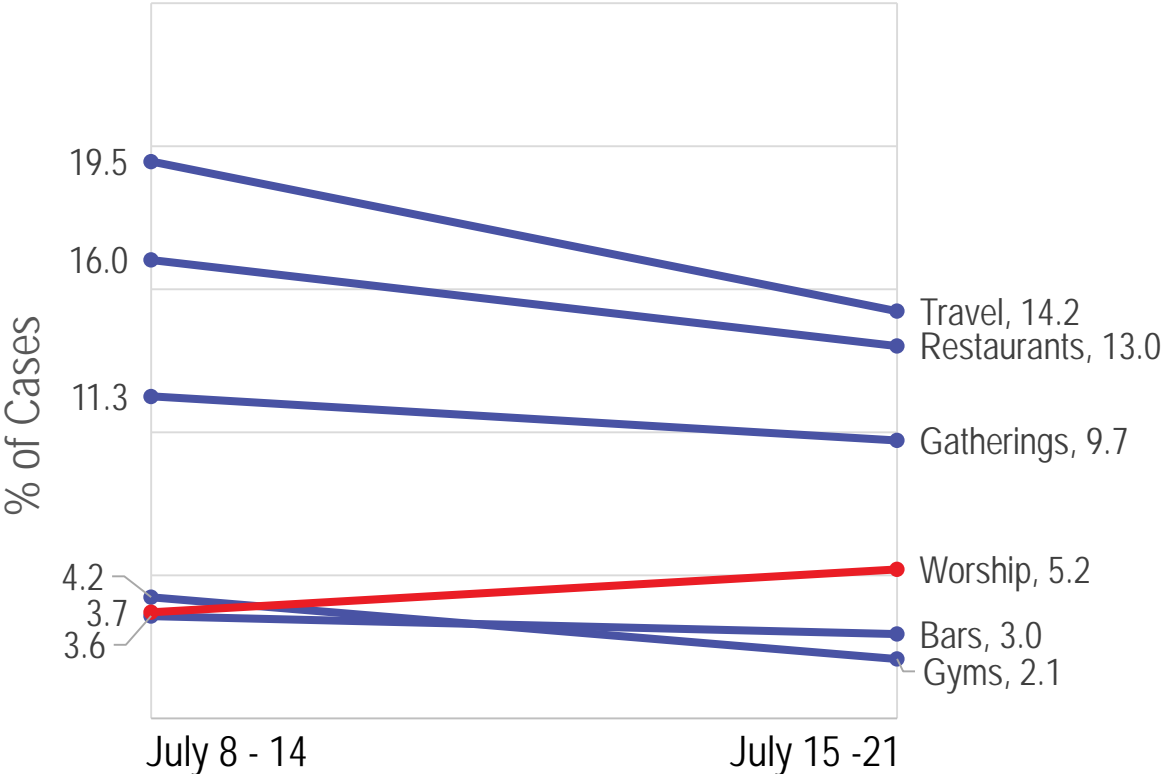
Source: Infectious Disease Epidemiology Bureau, Epidemiology and Response Division 7.28.2020, New Mexico Department of Health.



Investing for tomorrow, delivering today.



Between the weeks of July 8 and July 15, all exposures in the two weeks before symptoms decreased except in houses of worship.



Source: Infectious Disease Epidemiology Bureau, Epidemiology and Response Division 7.24.2020, New Mexico Department of Health.

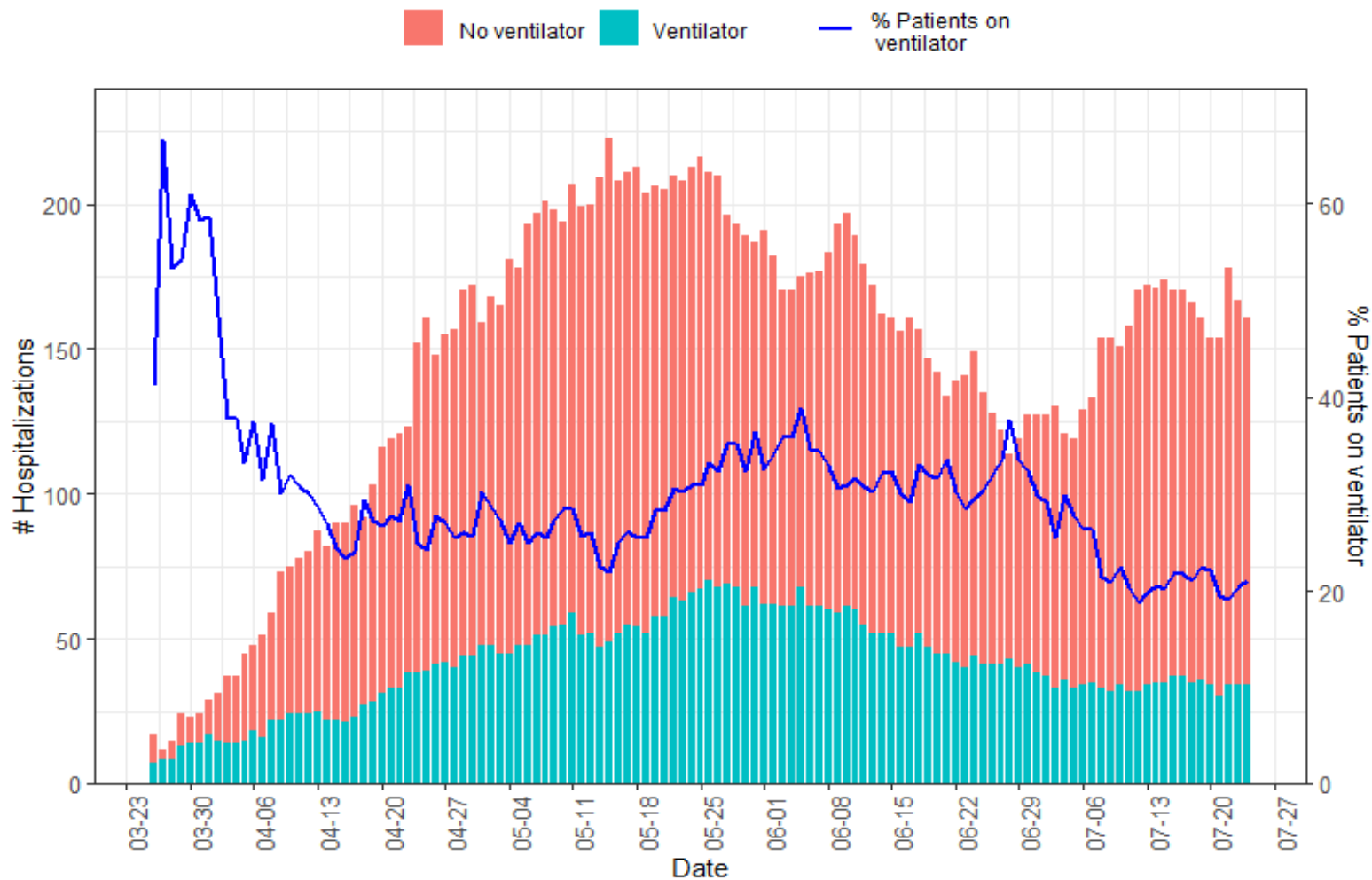


Investing for tomorrow, delivering today.



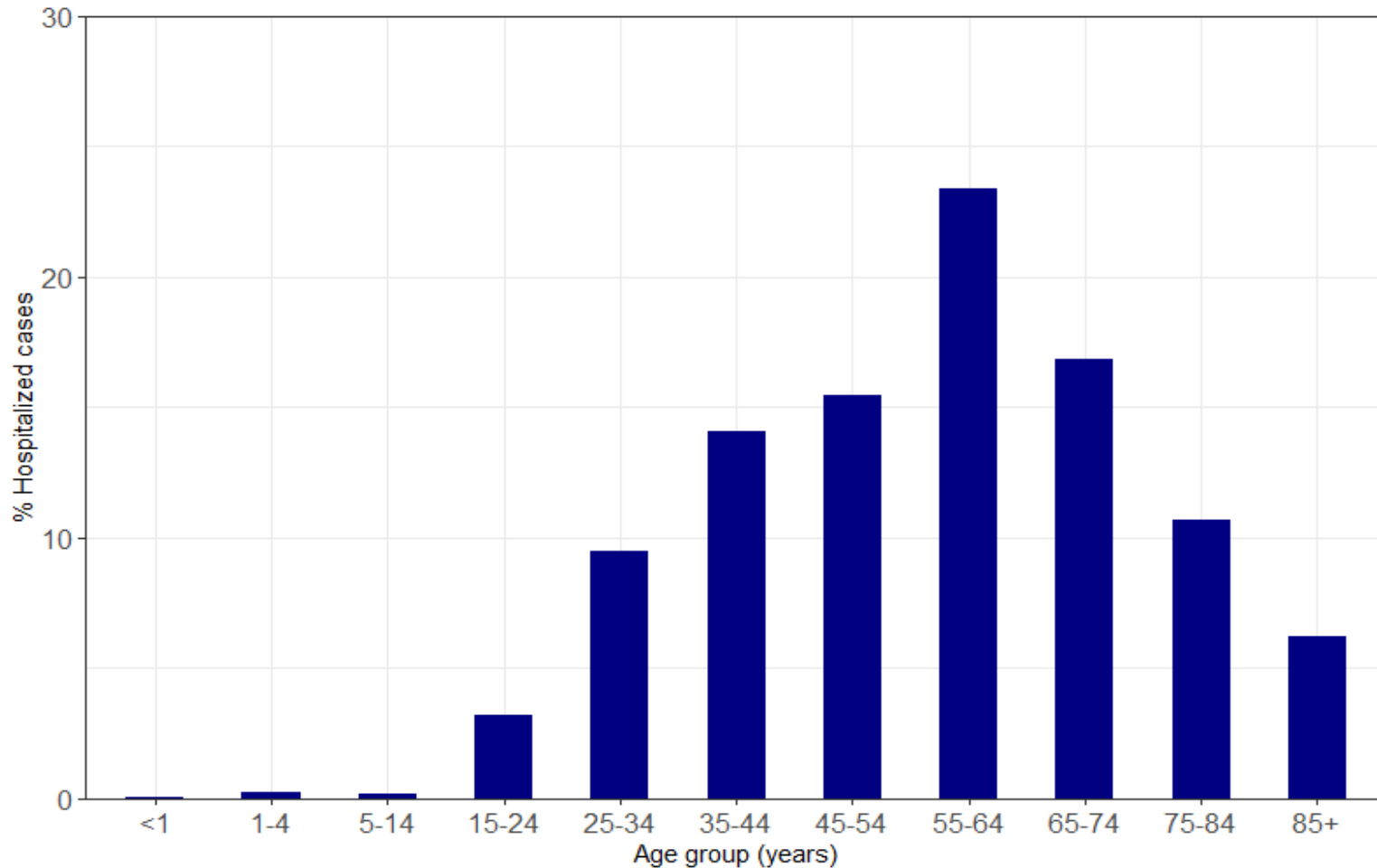
1190 S. St. Francis Drive • Santa Fe, NM 87505 • Phone: 505-827-2613 • Fax: 505-827-2530 • nmhealth.org

Hospitalizations have increased since early July. Ventilator use has been steady over the last couple of weeks and is currently at 23% (7/27).



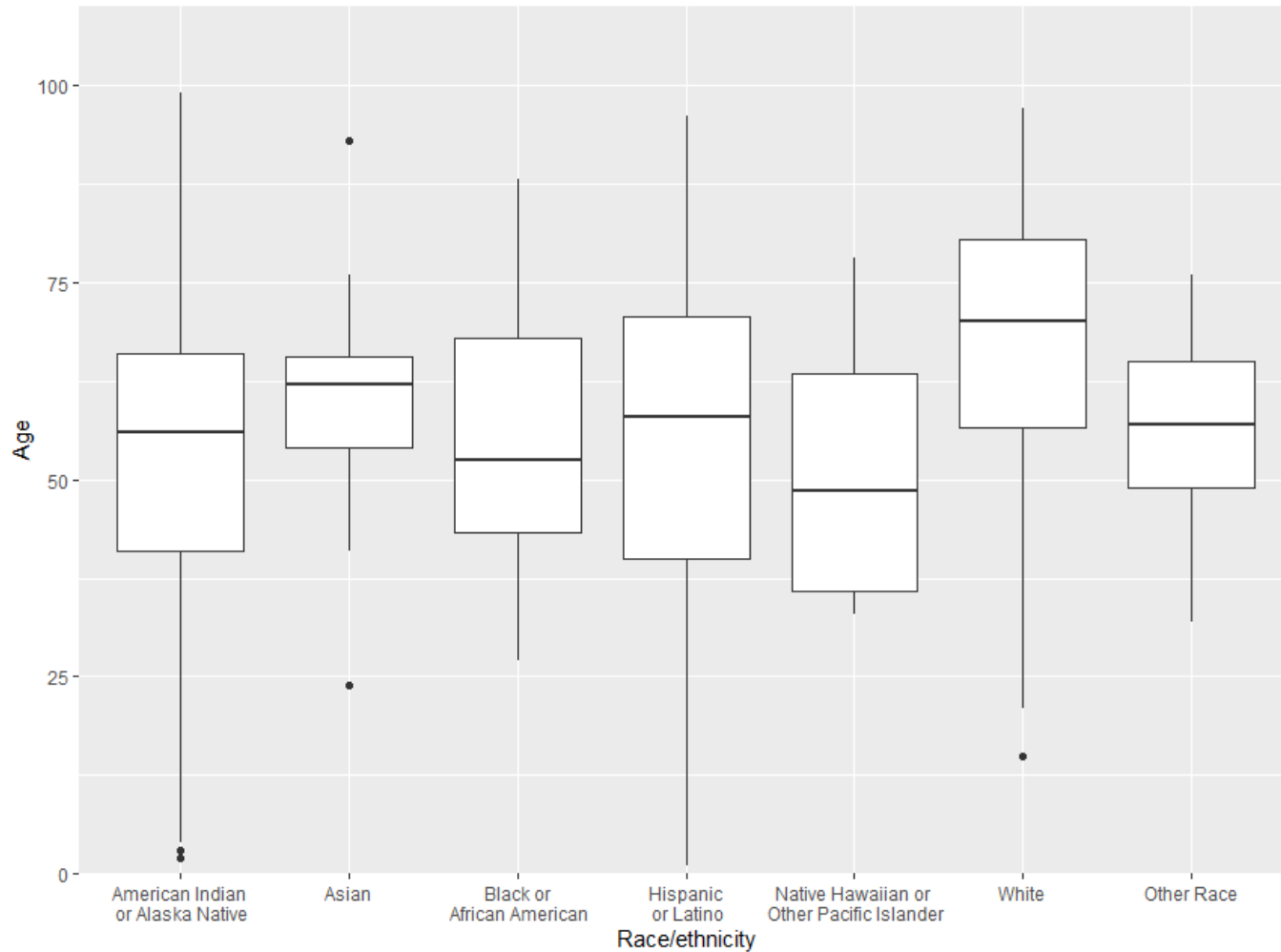
As of July 24, 2020

The 55-64 year old age group continues to make up the highest percentage of hospitalizations and has a hospitalization rate of 189.1 per 100,000 population



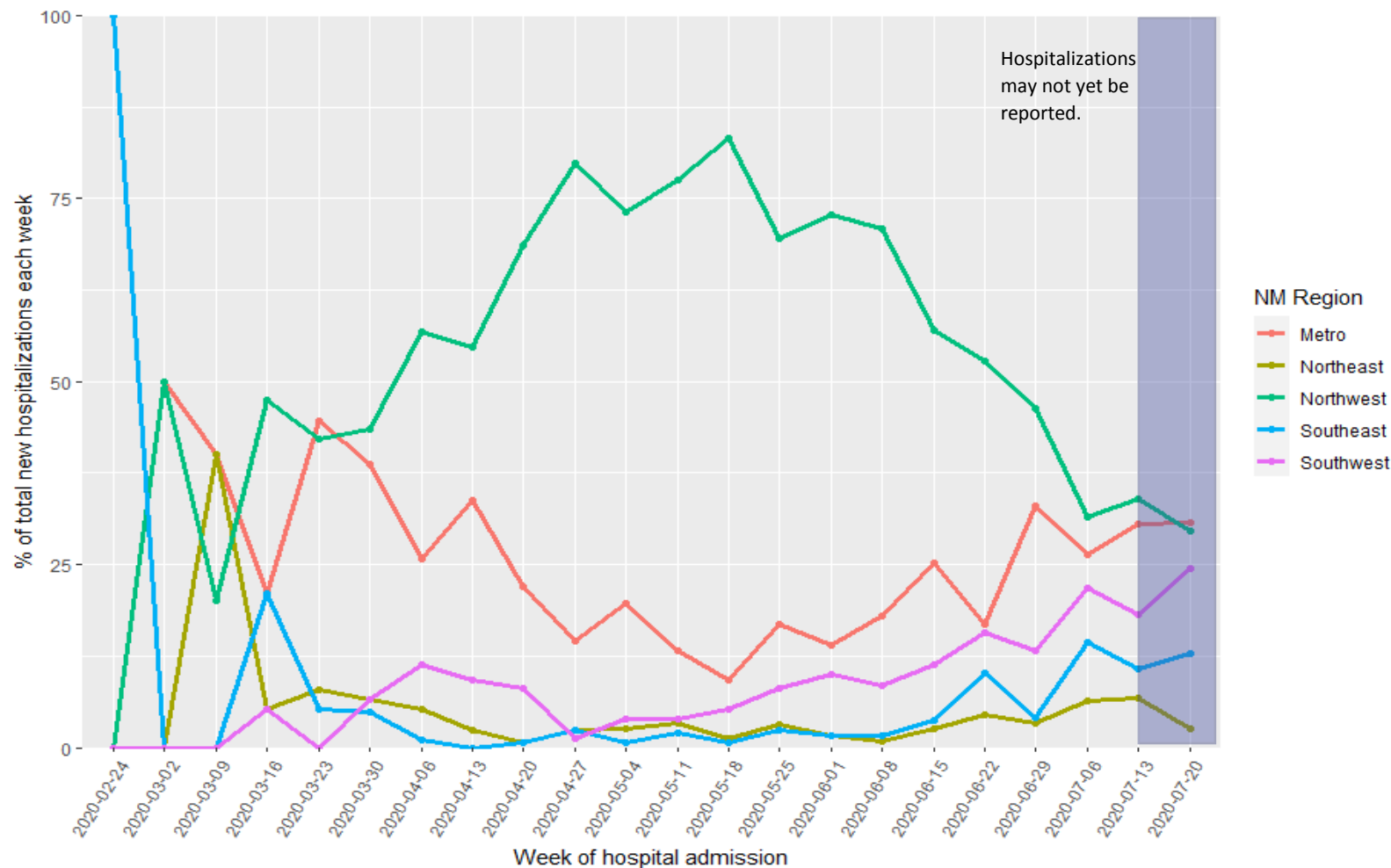
As of July 24, 2020

The median age of hospitalized cases is between 50-60 years old across all race/ethnicity groups except for Whites which is older (68 years old)



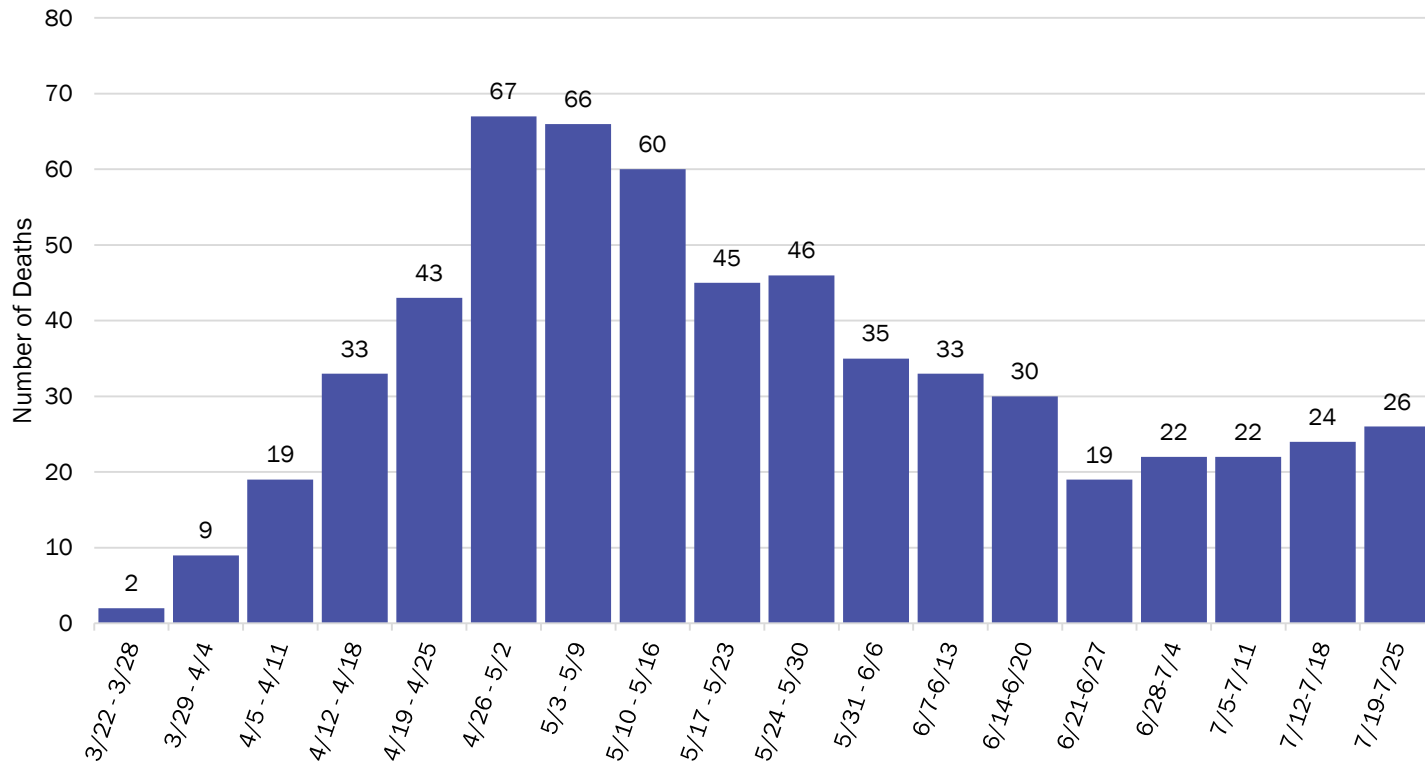
As of July 24, 2020

Weekly hospitalizations are increasing across all regions except for the NW which has had a steady decline since mid-May



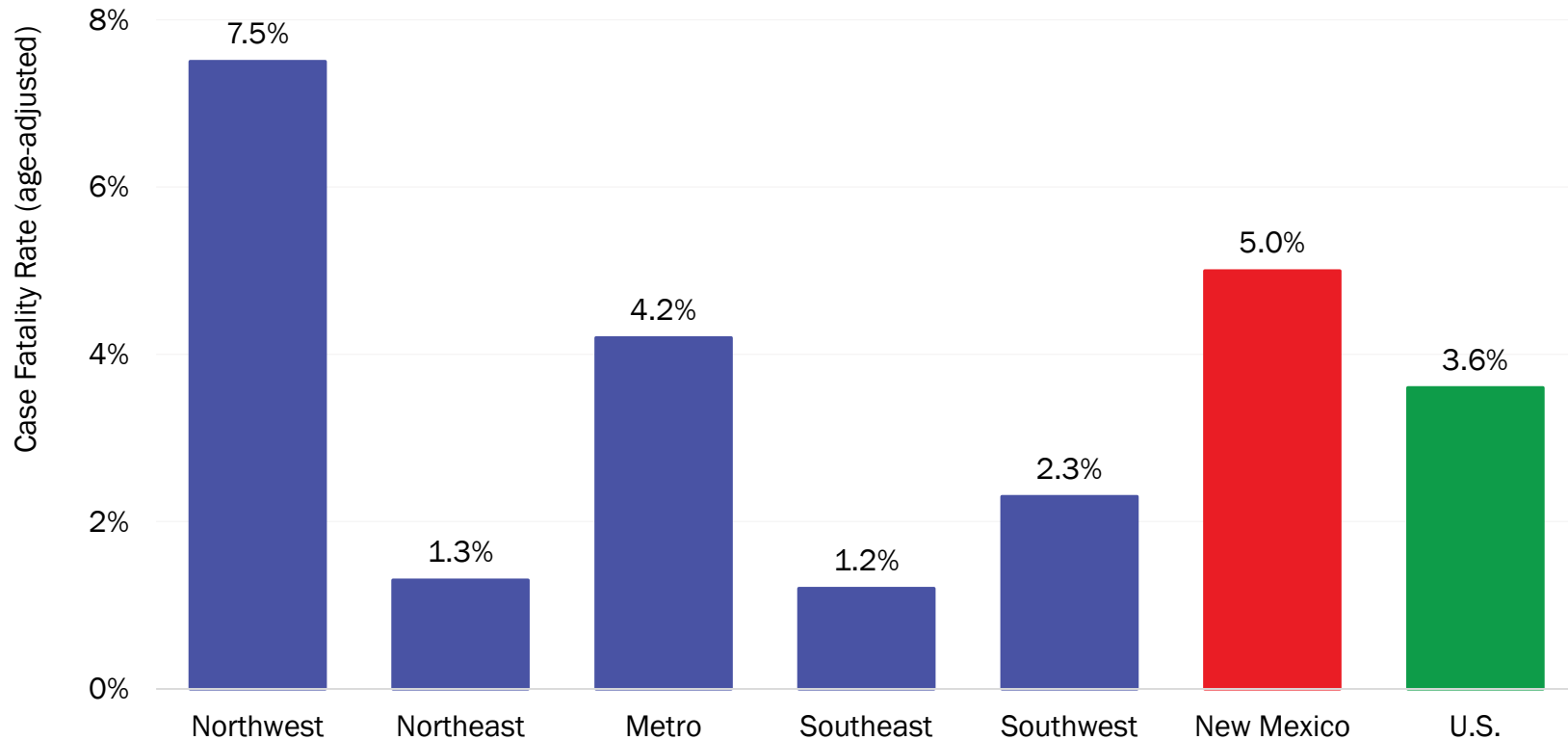
COVID-19 deaths have been decreasing since May, but may be beginning to increase

COVID-19 Deaths by Week of Death, New Mexico



Reporting through 7/24/2020

COVID-19 age-adjusted case fatality rates

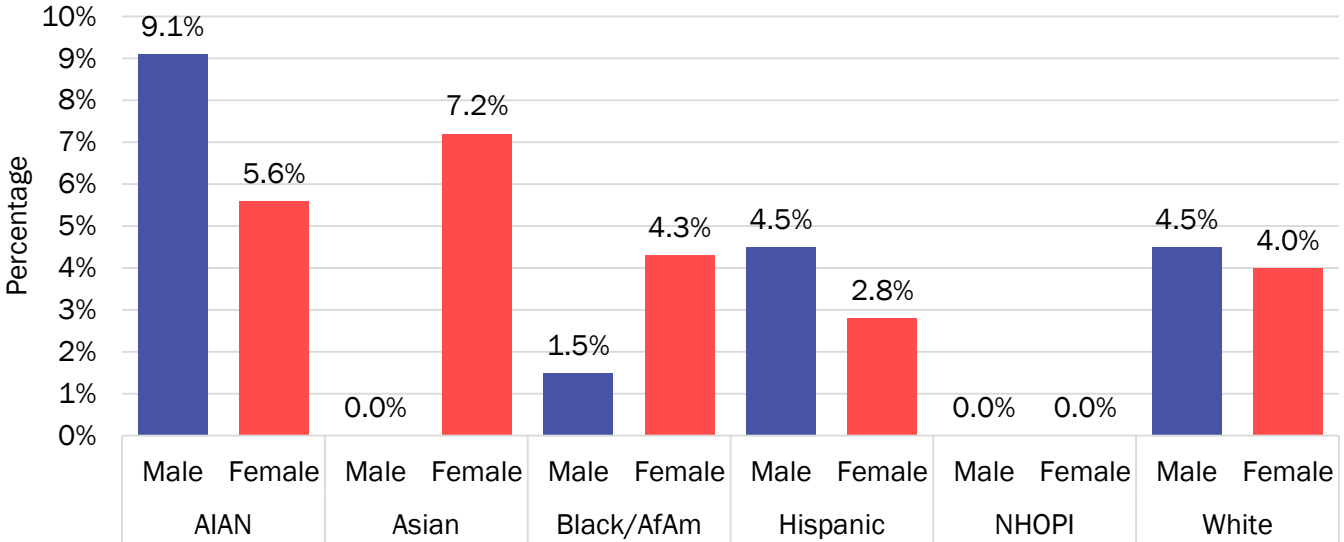


Rates have been age-adjusted to U.S. COVID-19 cases.

Source: Bureau of Vital Records and Health Statistics and Infectious Disease Epidemiology Bureau, Epidemiology and Response Division, reporting through 7.26.2020, New Mexico Department of Health.

Higher rate of mortality due to COVID-19 in males compared to females across most race/ethnicity groups

COVID-19 Age-Adjusted* Case Fatality Rate by Race/Ethnicity and Gender, New Mexico



Reporting through 7/24/2020; *Adjusted to U.S. COVID-19 cases.



Investing for tomorrow, delivering today.



New Mexico Status Updates

- Case count: Statewide, the increase in daily case counts may be slowing down.
- Hospitalizations: After a period of decline, hospitalizations are increasing
- Deaths: Deaths have been declining since mid-May, but may be beginning to rise.
- Social distancing: Cell phone data suggests the rise in mobility of New Mexico residents may be slowing down.
- Contact tracing: The median time to quarantine for contacts identified last week was 2.3 days.

Supplementary Slides

Modeling Assumptions

Variable	Measured Value	Value as of 7.2820
R_Effective	Actual Measured Daily Value by key county	R_eff=1.1
Positive Test Multiplier	Calculated by LANL	4.6
Hospitalization and Mortality	Actual rolling value / estimated number of total infected	Medical 0.24% ICU 0.19% Vent Rate 47% of ICU Crude Case Fatality Rate 4.6%
Length of Stay	Actual rolling value / estimated number of total infected	Medical 5 days ICU 14 days ICU on Vent 14 days