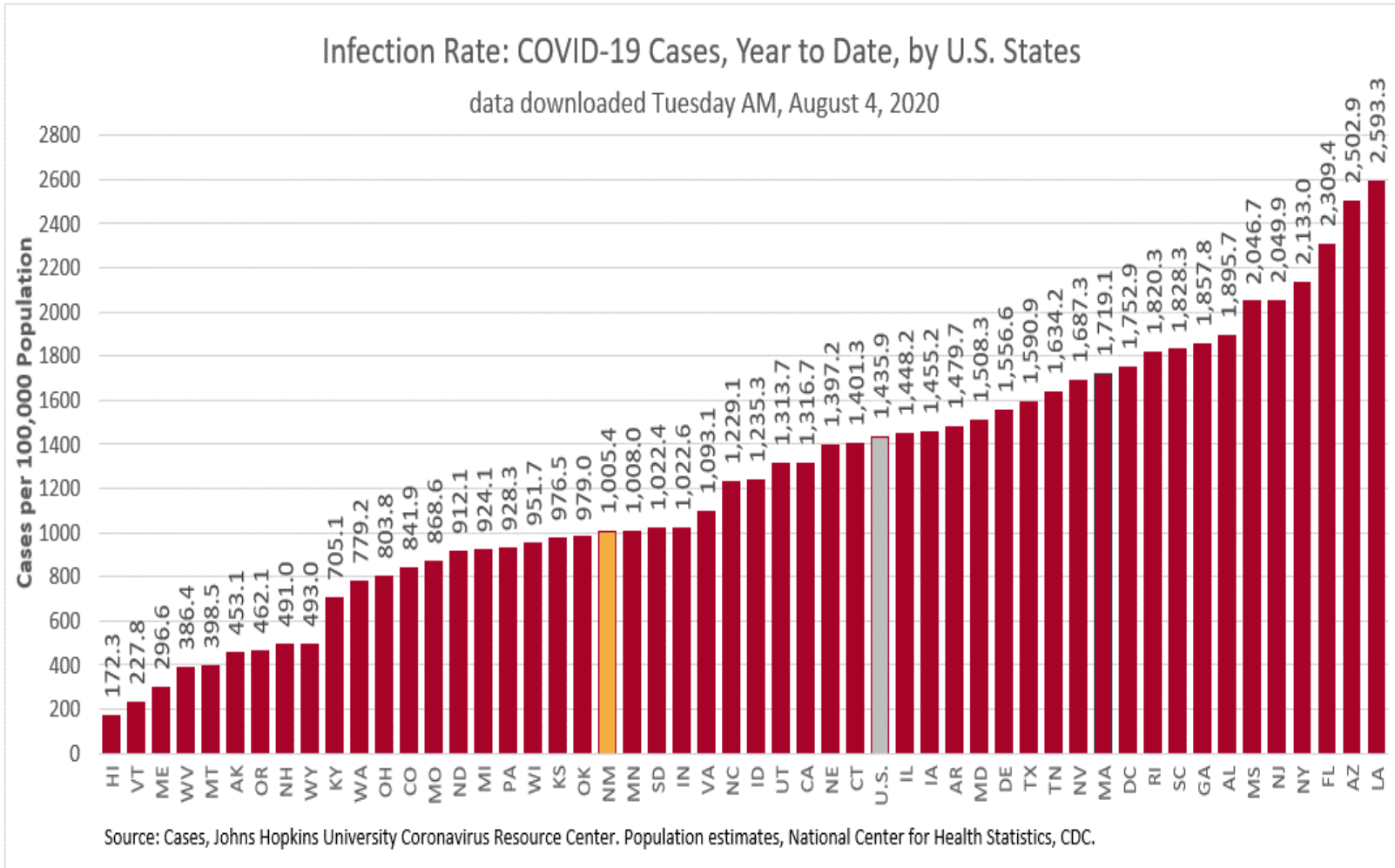


COVID-19 in New Mexico: Epidemiologic and Modeling Update

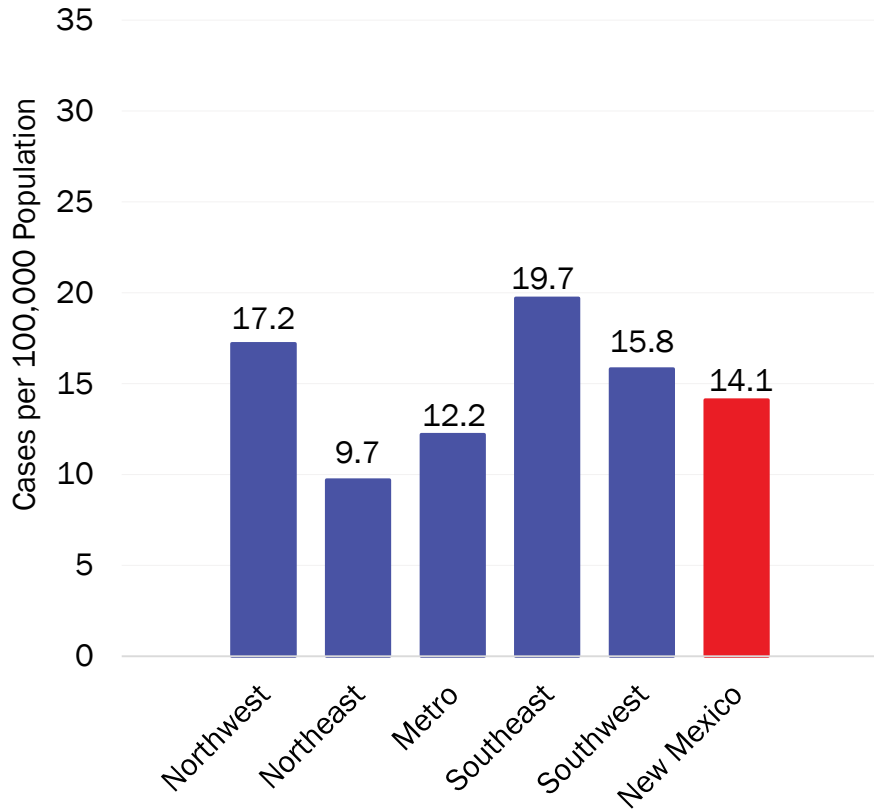
August 4, 2020

New Mexico has the 31st highest prevalence in the United States

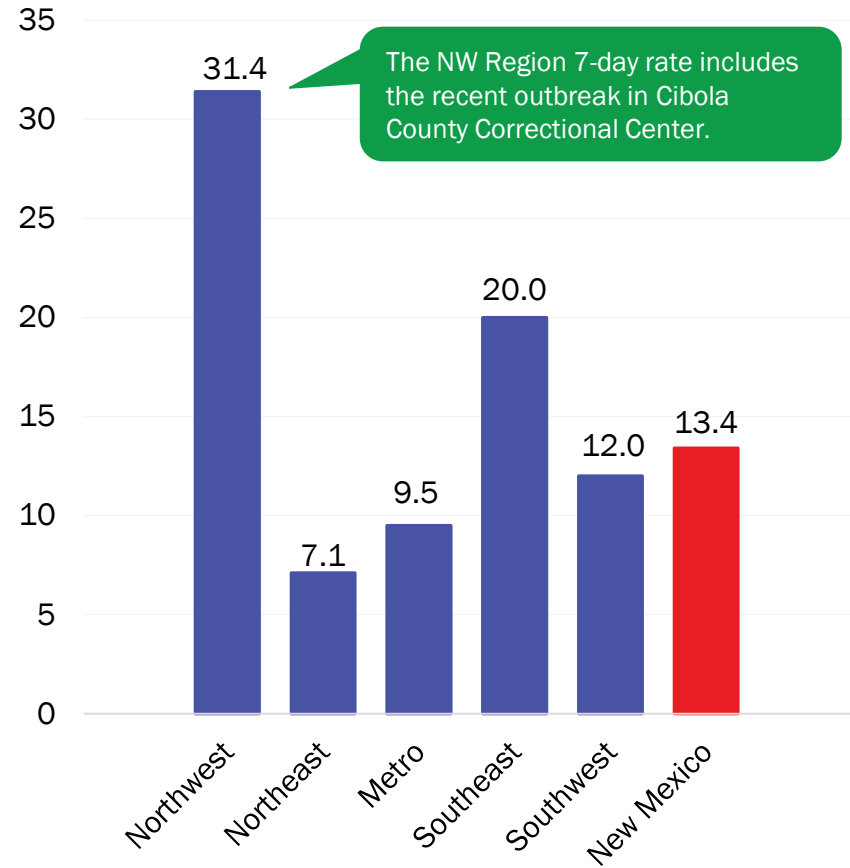


COVID-19 prevalence per 100,000 population

New cases (Last 7 days) – July 28



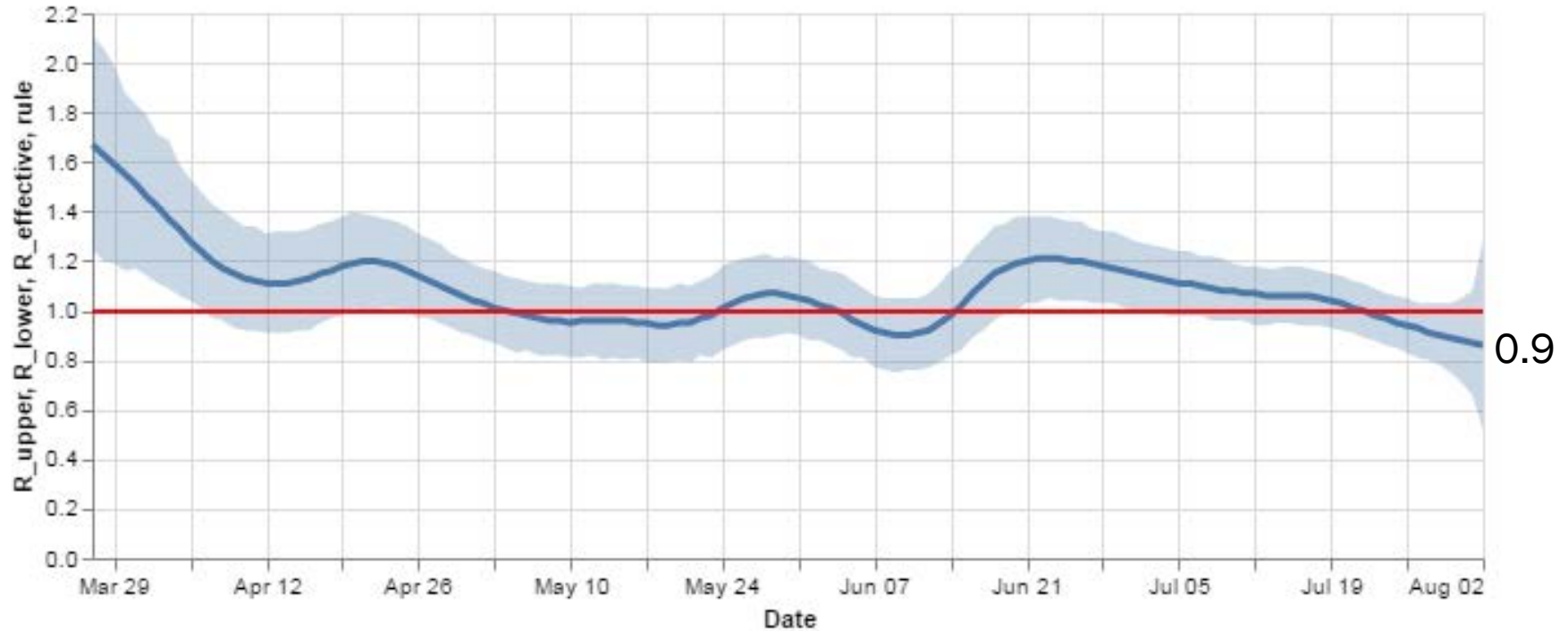
New cases (Last 7 days) – August 3



Source: Infectious Disease Epidemiology Bureau, Epidemiology and Response Division 8.2.2020, New Mexico Department of Health. Population estimates, UNM Geospatial and Population Studies Program.

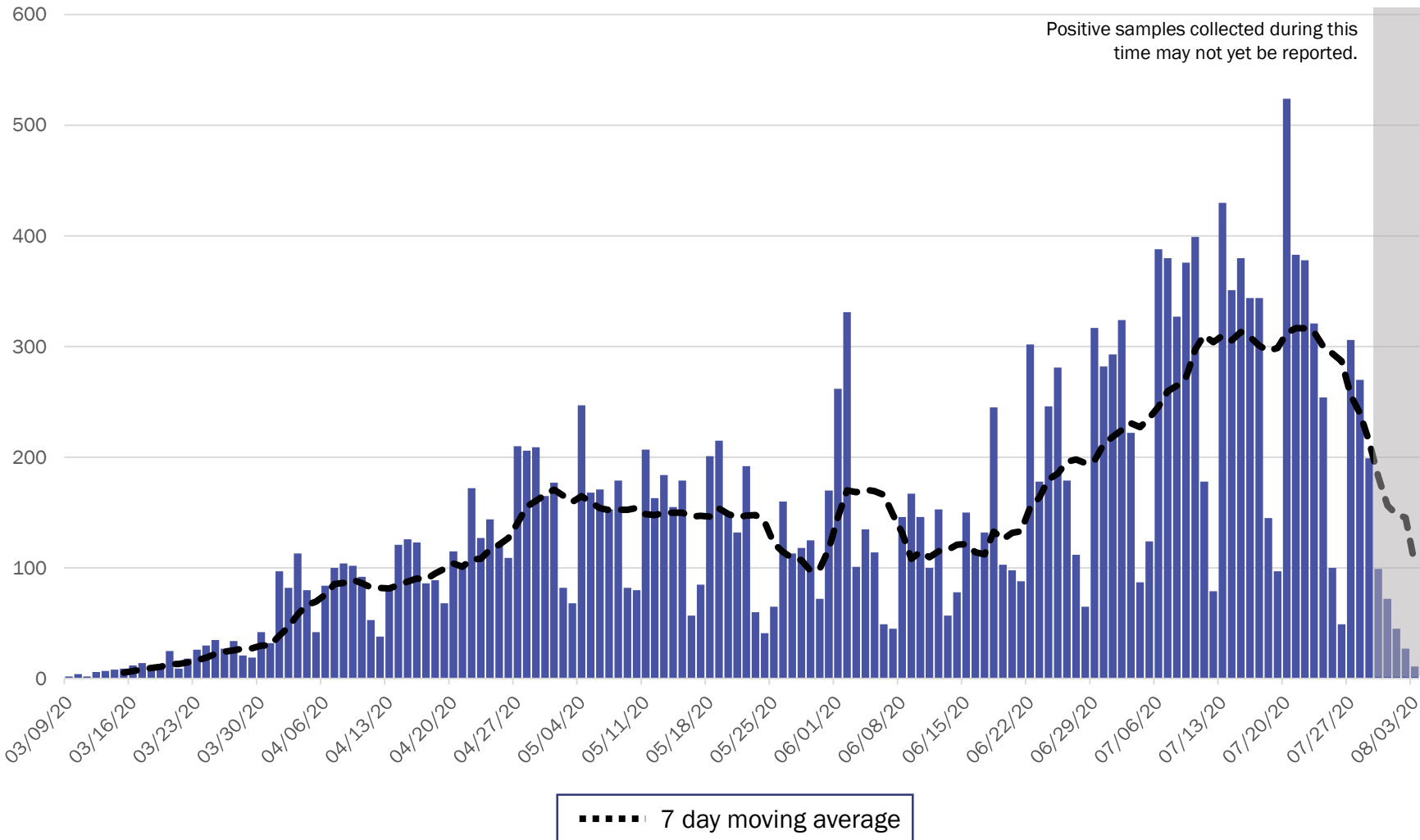
Statewide R-effective has decreased to 0.9.

R_effective over time, STATE



Courtesy of Presbyterian Healthcare Services – August 3, 2020.

New Mexico COVID-19 Cases by Date of Specimen Collection – 8/4/20



Source: Infectious Disease Epidemiology Bureau, Epidemiology and Response Division 8.4.2020, New Mexico Department of Health.



Investing for tomorrow, delivering today.



Key

- Low Level Endemic <1.0
- Approaching Low Level Endemic 1.0-1.05
- Requiring further mitigation >1.05

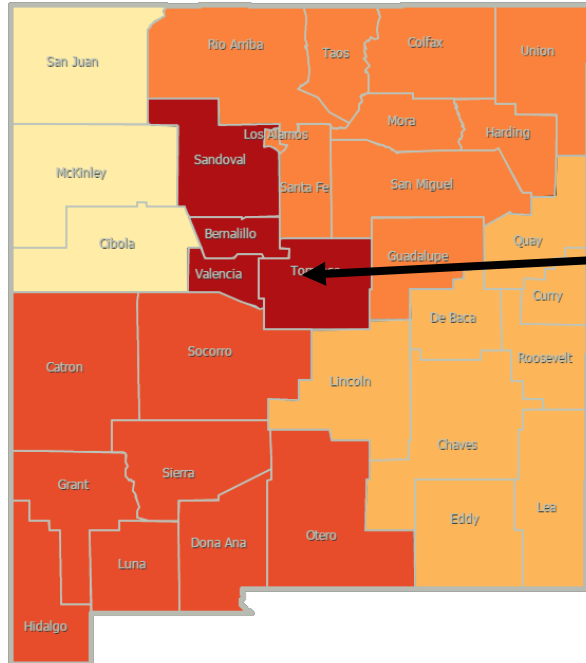
Northwest
R_effective 1.0 ↓

Northeast
R_effective 0.8 ↓

Southwest
R_effective 0.7 ↓

Metro
R_effective 0.8 ↓

Southeast
R_effective 1.1 ↓



As of July 28, 2020

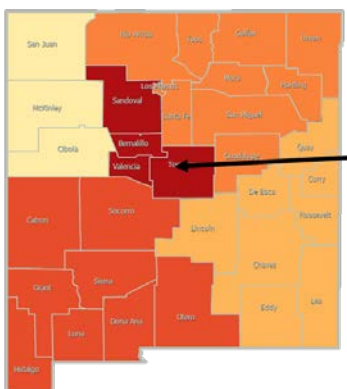
Northwest
R_effective 1.6 ↑

Northeast
R_effective 0.9 ↓

Metro
R_effective 0.9 ↓

Southwest
R_effective 1.2 ↑

Southeast
R_effective 1.2 ↑



Region	R-effective	95% Confidence Interval
State	0.9	[0.5, 1.3]
Metro	0.8	[0.2, 1.4]
Northeast	0.8	[0.0, 2.5]
Northwest	1.0	[0.2, 2.0]
Southeast	1.1	[0.2, 1.9]
Southwest	0.7	[0.0, 1.6]

Courtesy of Presbyterian Healthcare Services – August 3, 2020.

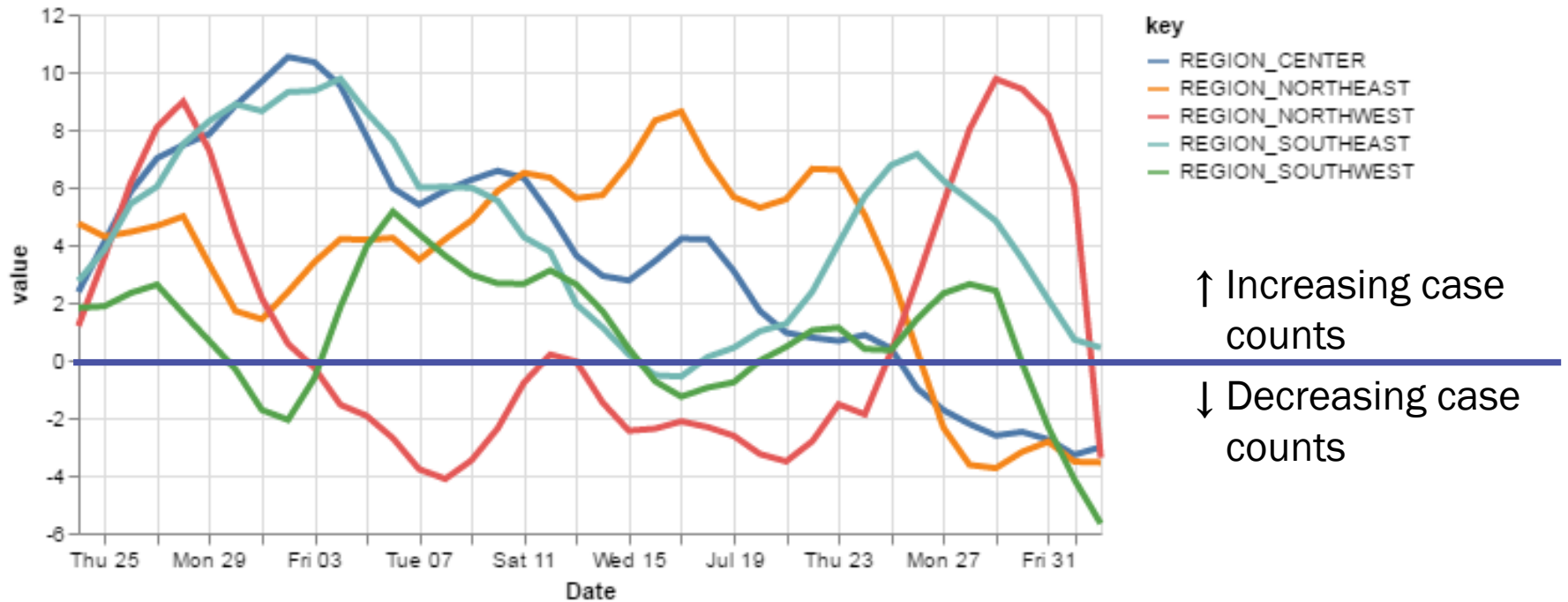


Investing for tomorrow, delivering today.



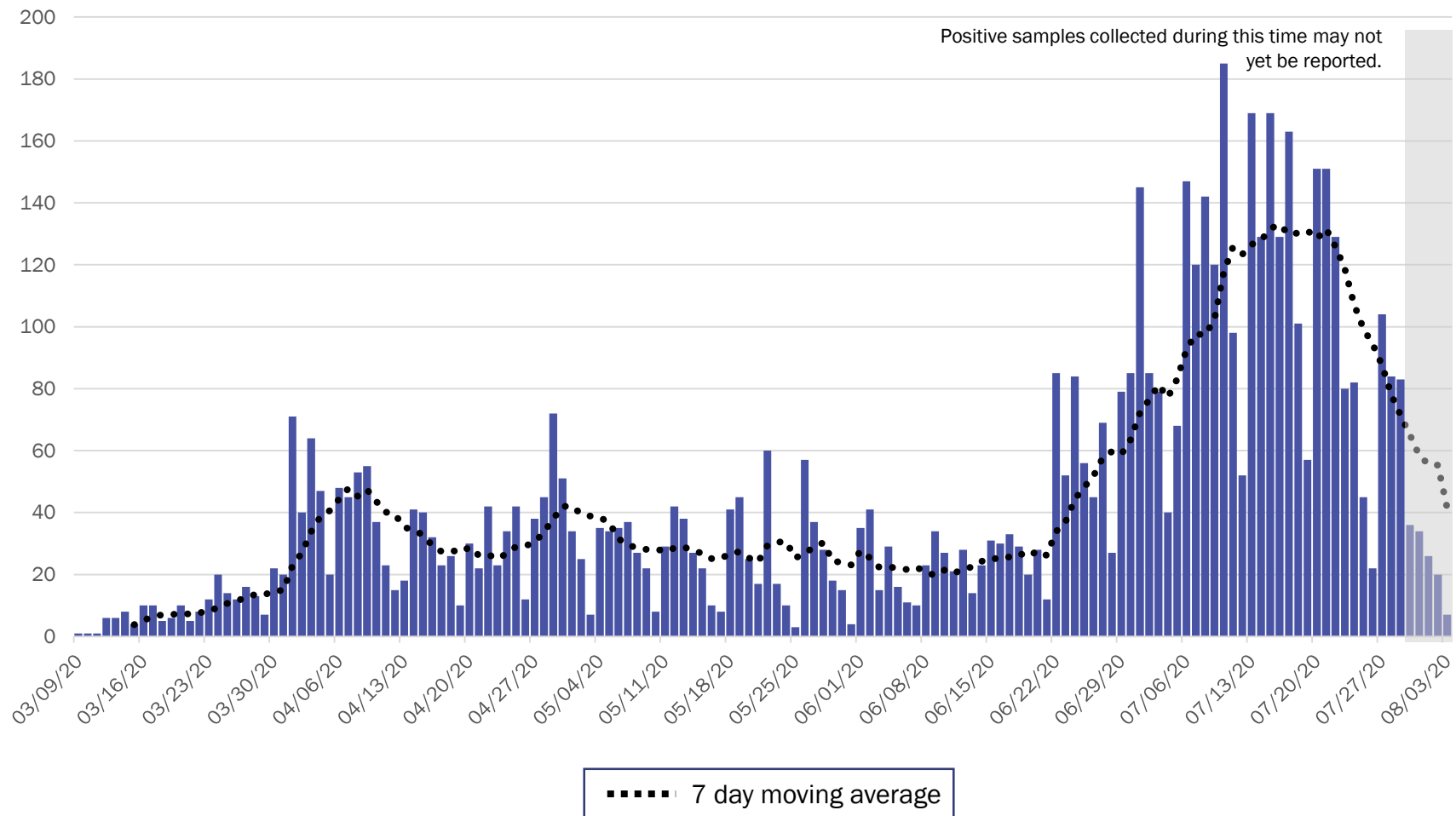
The Northwest, Metro, Northeast, and Southwest relative growth rate have dropped below 0.

14-day relative growth rate (%), Regions



Courtesy of Presbyterian Healthcare Services – August 3, 2020.

Metro Region Case Count by Collection Date with 7 Day Moving Average August 4, 2020



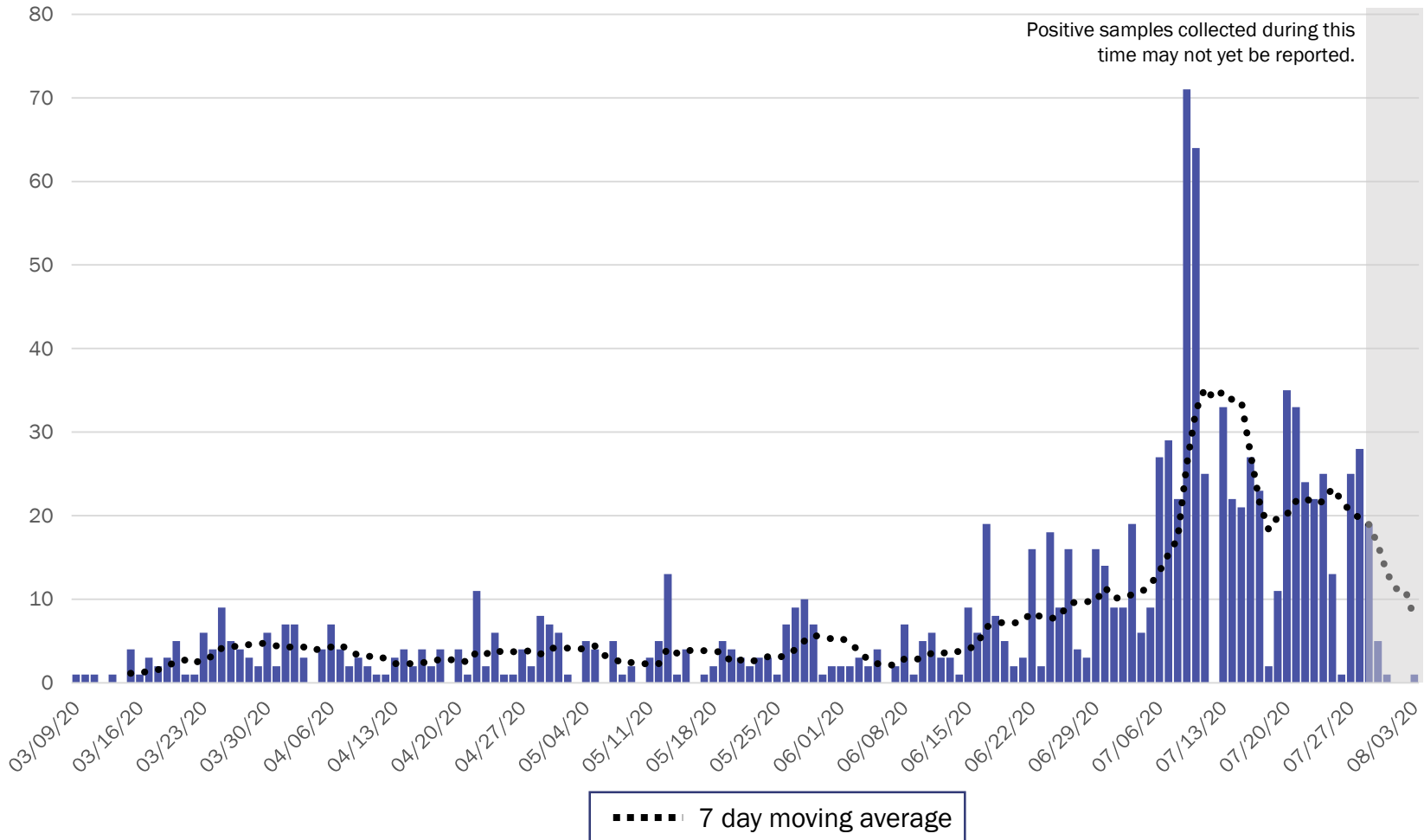
Source: Infectious Disease Epidemiology Bureau, Epidemiology and Response Division 8.4.2020, New Mexico Department of Health.



Investing for tomorrow, delivering today.



Northeast Region Case Count by Collection Date with 7 Day Moving Average August 4, 2020

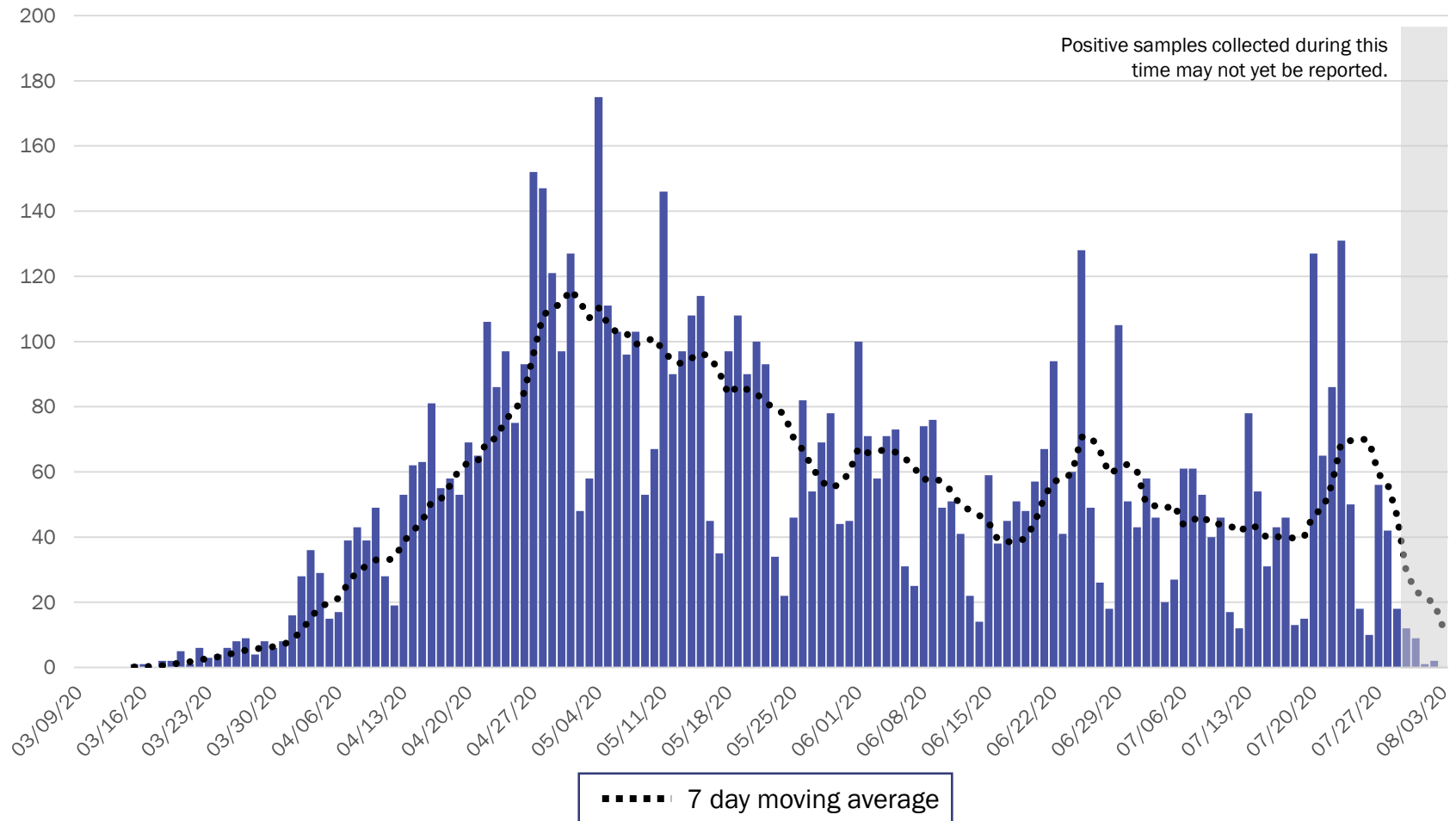


Source: Infectious Disease Epidemiology Bureau, Epidemiology and Response Division 8.4.2020, New Mexico Department of Health.



Investing for tomorrow, delivering today.

Northwest Region Case Count by Collection Date with 7 Day Moving Average August 4, 2020



Source: Infectious Disease Epidemiology Bureau, Epidemiology and Response Division 8.4.2020, New Mexico Department of Health.

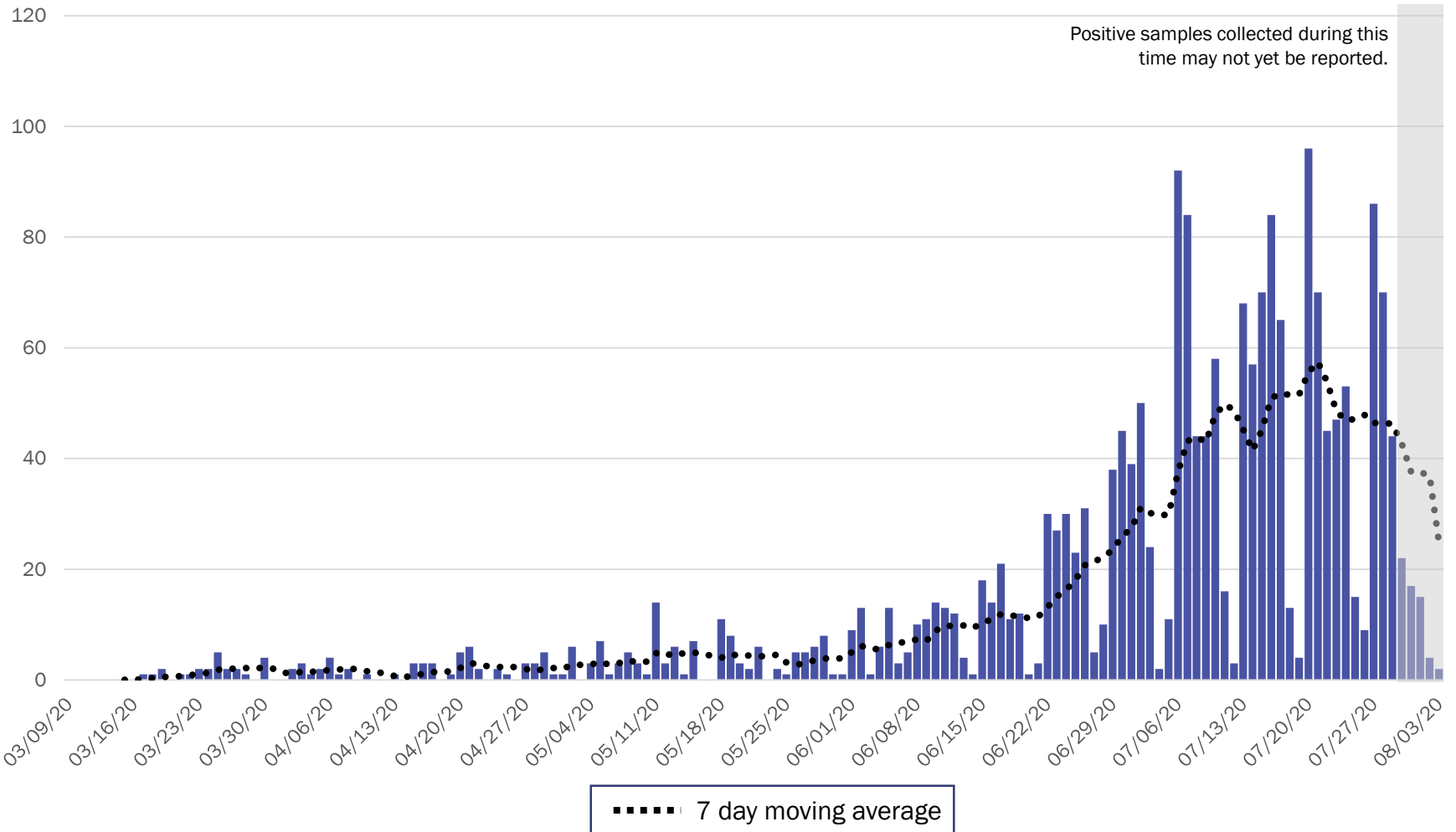


Investing for tomorrow, delivering today.

1190 S. St. Francis Drive • Santa Fe, NM 87505 • Phone: 505-827-2613 • Fax: 505-827-2530 • nmhealth.org

Southeast Region Case Count by Collection Date with 7 Day Moving Average

August 4, 2020



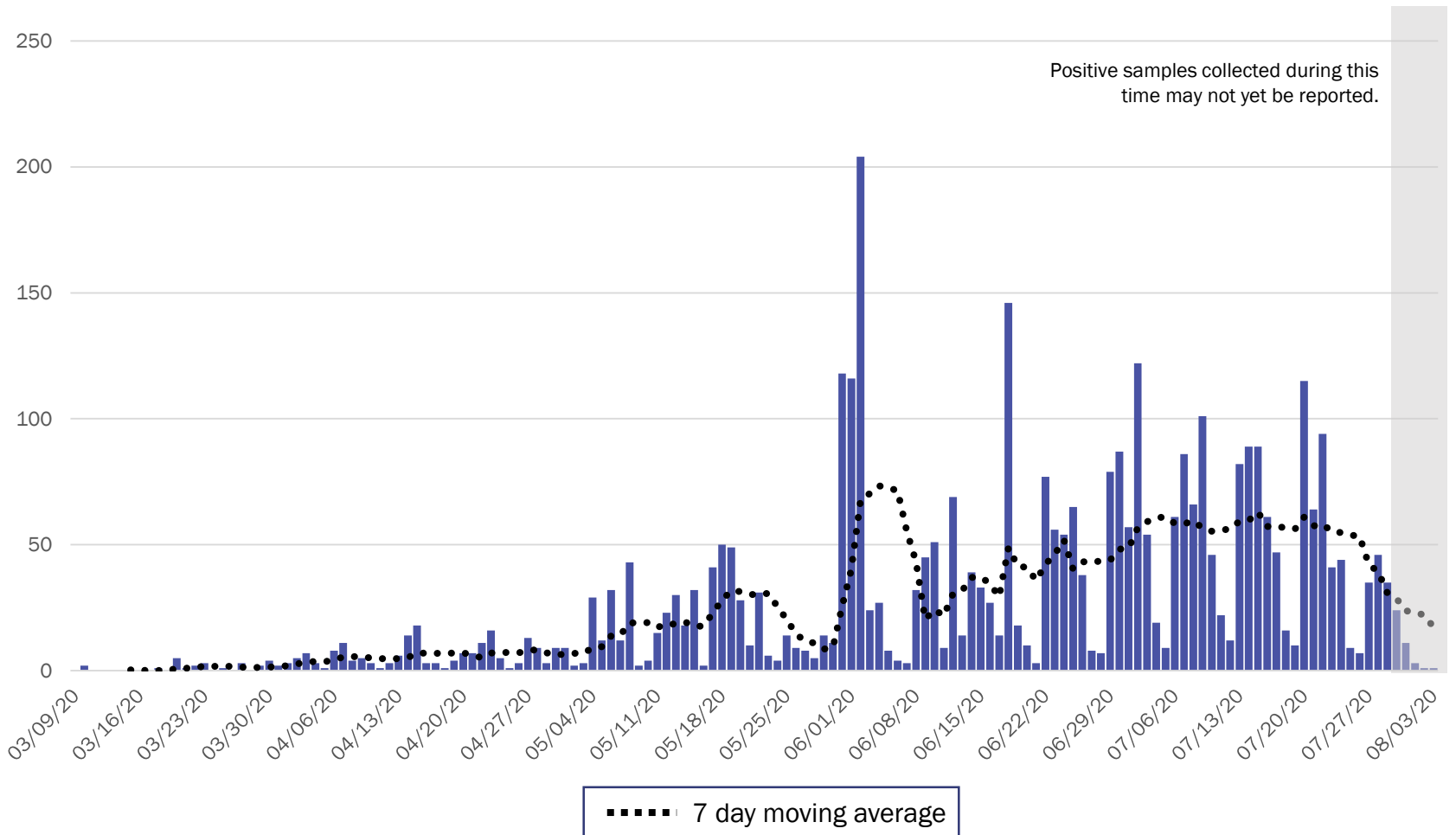
Source: Infectious Disease Epidemiology Bureau, Epidemiology and Response Division 8.4.2020, New Mexico Department of Health.



Investing for tomorrow, delivering today.

1190 S. St. Francis Drive • Santa Fe, NM 87505 • Phone: 505-827-2613 • Fax: 505-827-2530 • nmhealth.org

Southwest Region Case Count by Collection Date with 7 Day Moving Average August 4, 2020

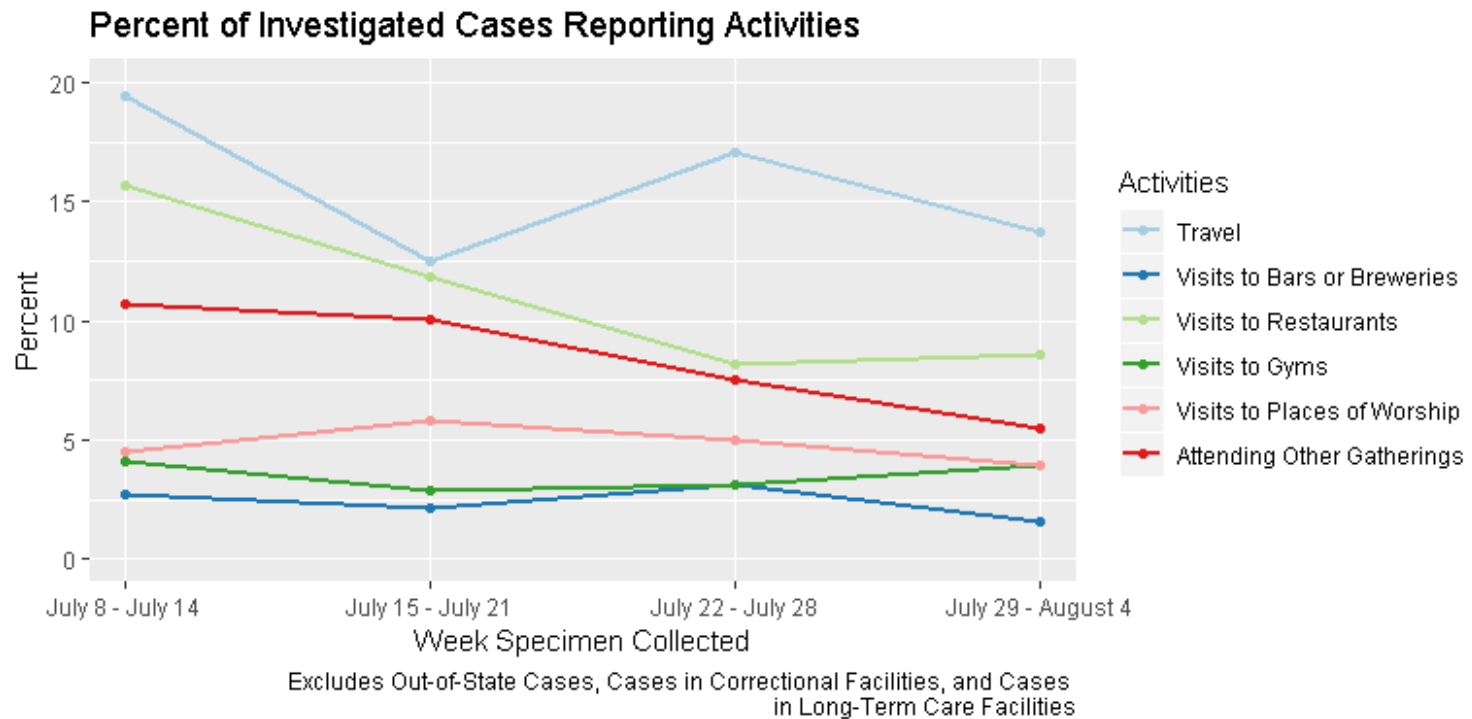


Source: Infectious Disease Epidemiology Bureau, Epidemiology and Response Division 7.21.2020, New Mexico Department of Health.



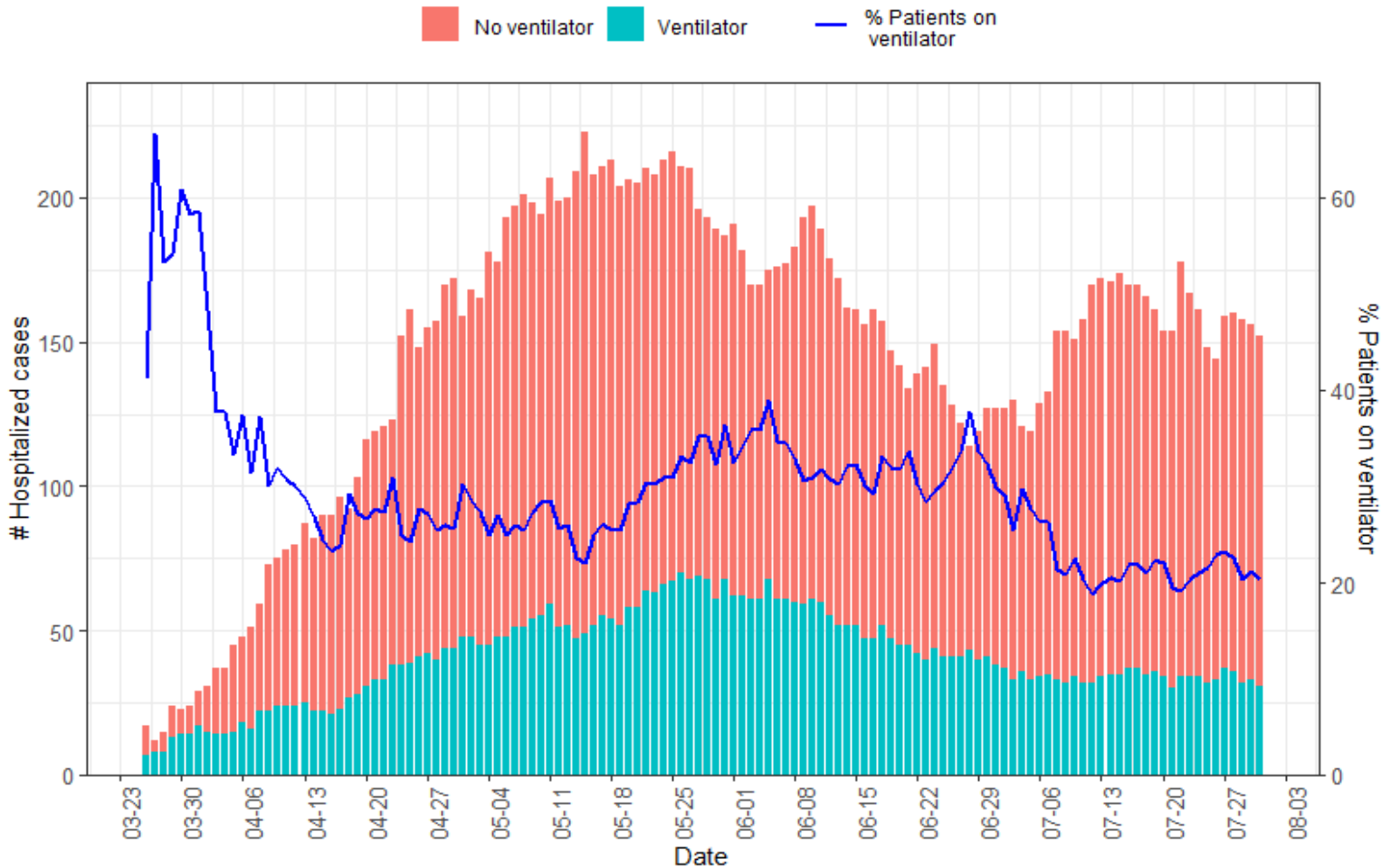
Investing for tomorrow, delivering today.

Visits to restaurants and community gatherings has decreased among cases. Travel remains high.



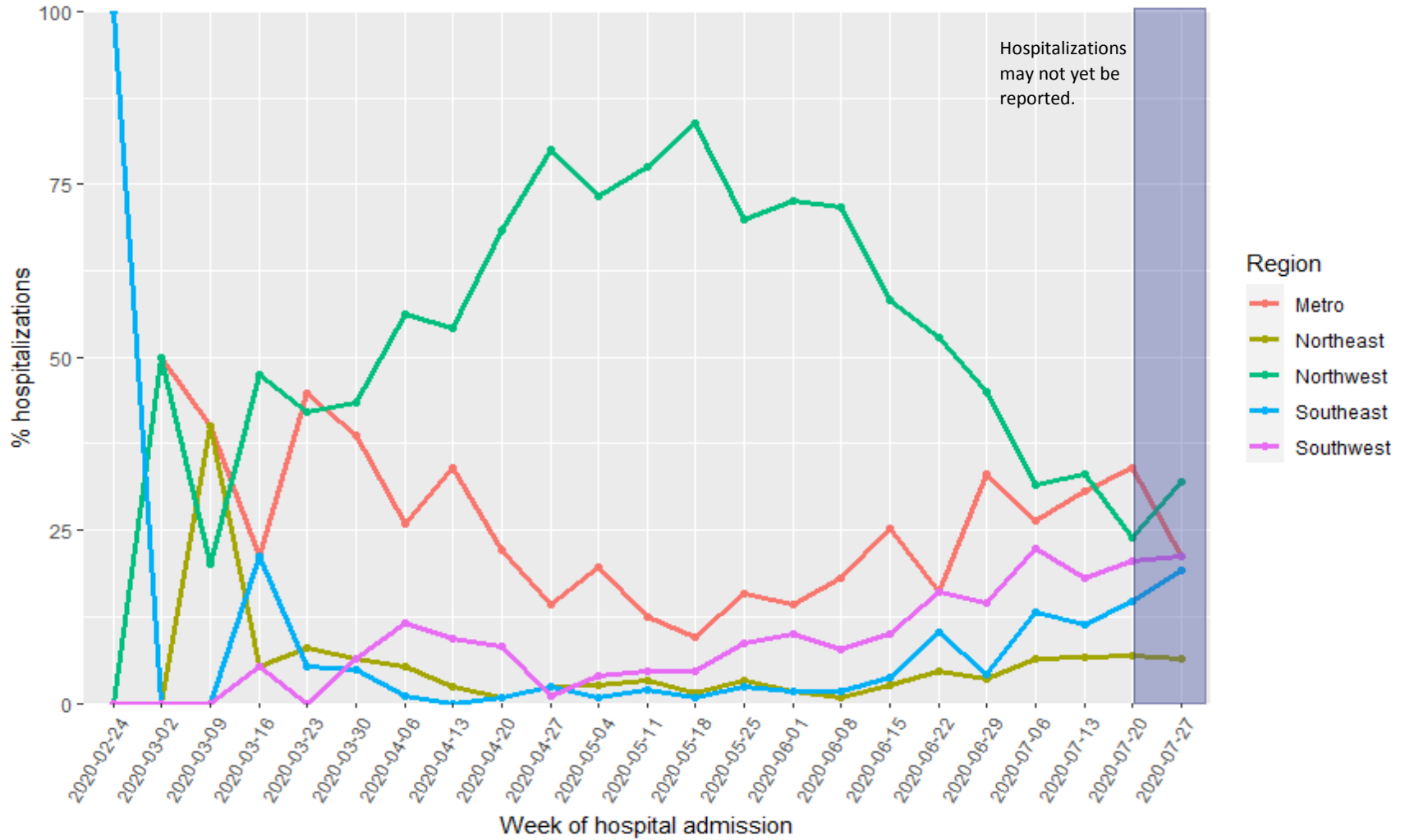
Source: Infectious Disease Epidemiology Bureau, Epidemiology and Response Division 8.4.2020, New Mexico Department of Health.

Hospitalizations are beginning to decrease. As of 8/3, ventilator use is at 22%.



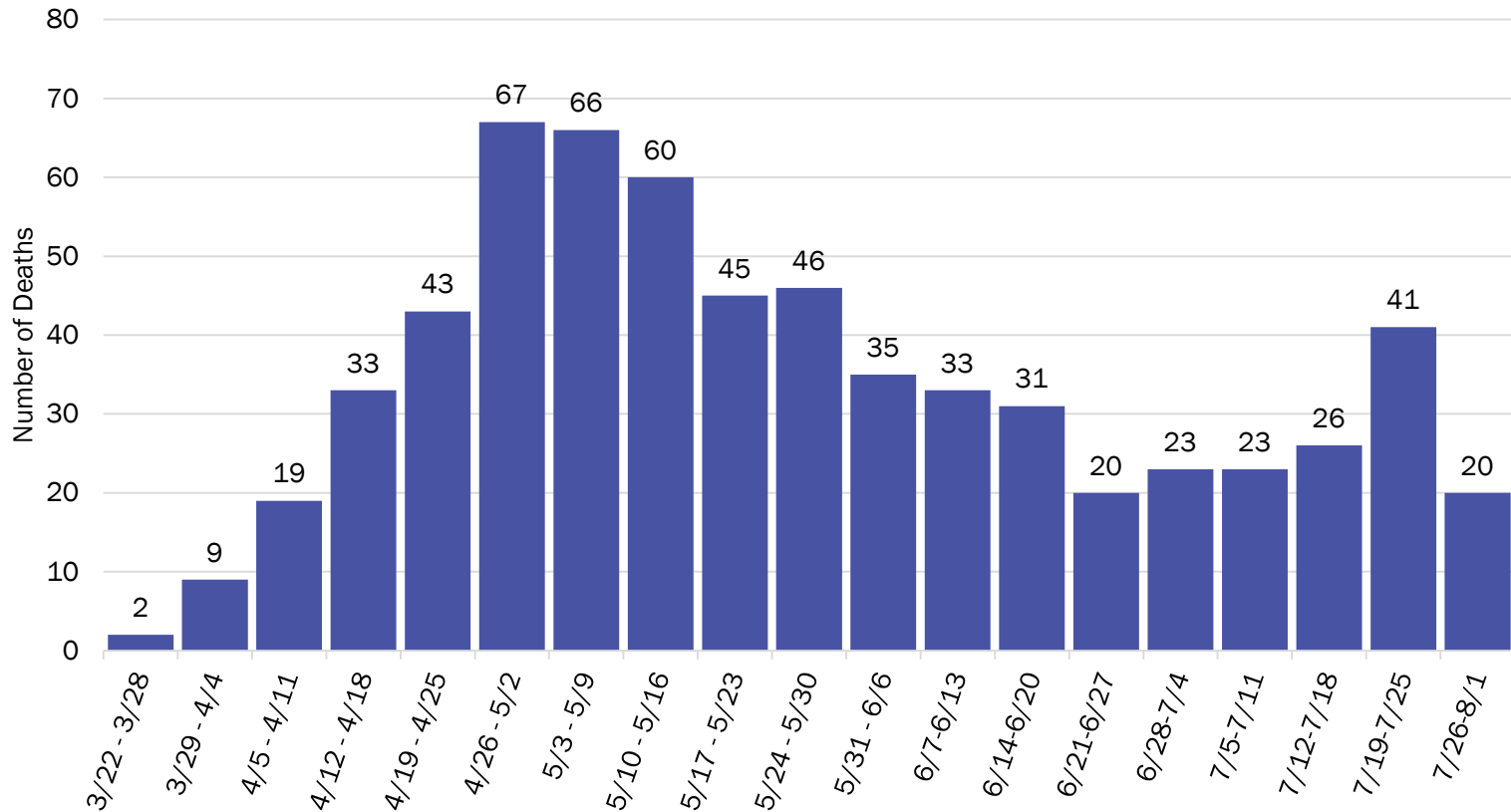
As of July 31, 2020

Weekly hospitalizations may be beginning to increase in the NW region, decrease in the Metro region, and plateau in the NE region.



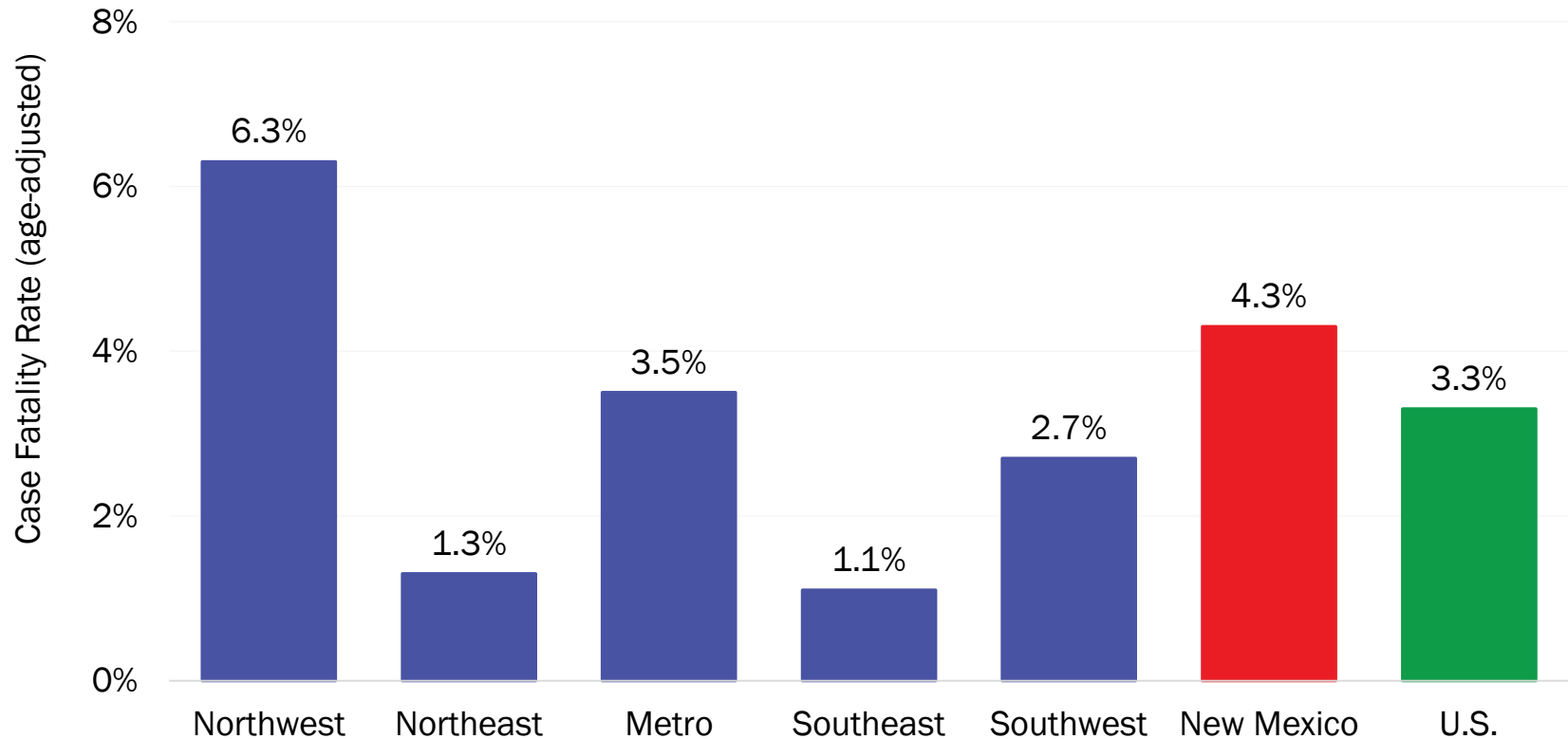
Sharp increase in deaths two weeks ago, but decreased last week

COVID-19 Deaths by Week of Death, New Mexico



Reporting through 7/31/2020

Since last week, COVID-19 age-adjusted case fatality rates have decreased in the NW, Metro, and SE regions, but increased in the SW region



Note: Age-adjusted case fatality rates are adjusted to the current distribution of U.S. COVID-19 cases on 8/2. <https://www.cdc.gov/covid-data-tracker/index.html#demographics>

CDC age group categories differ from those previously reported, so the age-adjusted rates for NM are not comparable to previously produced rates.

Source: Bureau of Vital Records and Health Statistics and Infectious Disease Epidemiology Bureau, Epidemiology and Response Division, reporting through 8.2.2020, New Mexico Department of Health.

New Mexico Status Updates

- Case count: Statewide, the increase in daily case counts are declining.
- Hospitalizations: After a period of increase in July, hospitalizations are decreasing.
- Deaths: There was a spike in deaths two weeks ago, but decreased last week
- Social distancing: Cell phone data suggests the mobility of New Mexico residents has been stable, but this varies by region.
- Contact tracing: The median time to quarantine for contacts identified last week was 2 days.

Supplementary Slides

Modeling Assumptions

Variable	Measured Value	Value as of 8.3.20
R_Effective	Actual Measured Daily Value by key county	R_eff=0.9
Positive Test Multiplier	Calculated by LANL	4.4
Hospitalization and Mortality	Actual rolling value / estimated number of total infected	Medical 0.22% ICU 0.15% Vent Rate 54% of ICU Crude Case Fatality Rate 4.4%
Length of Stay	Actual rolling value / estimated number of total infected	Medical 5 days ICU 14 days ICU on Vent 14 days