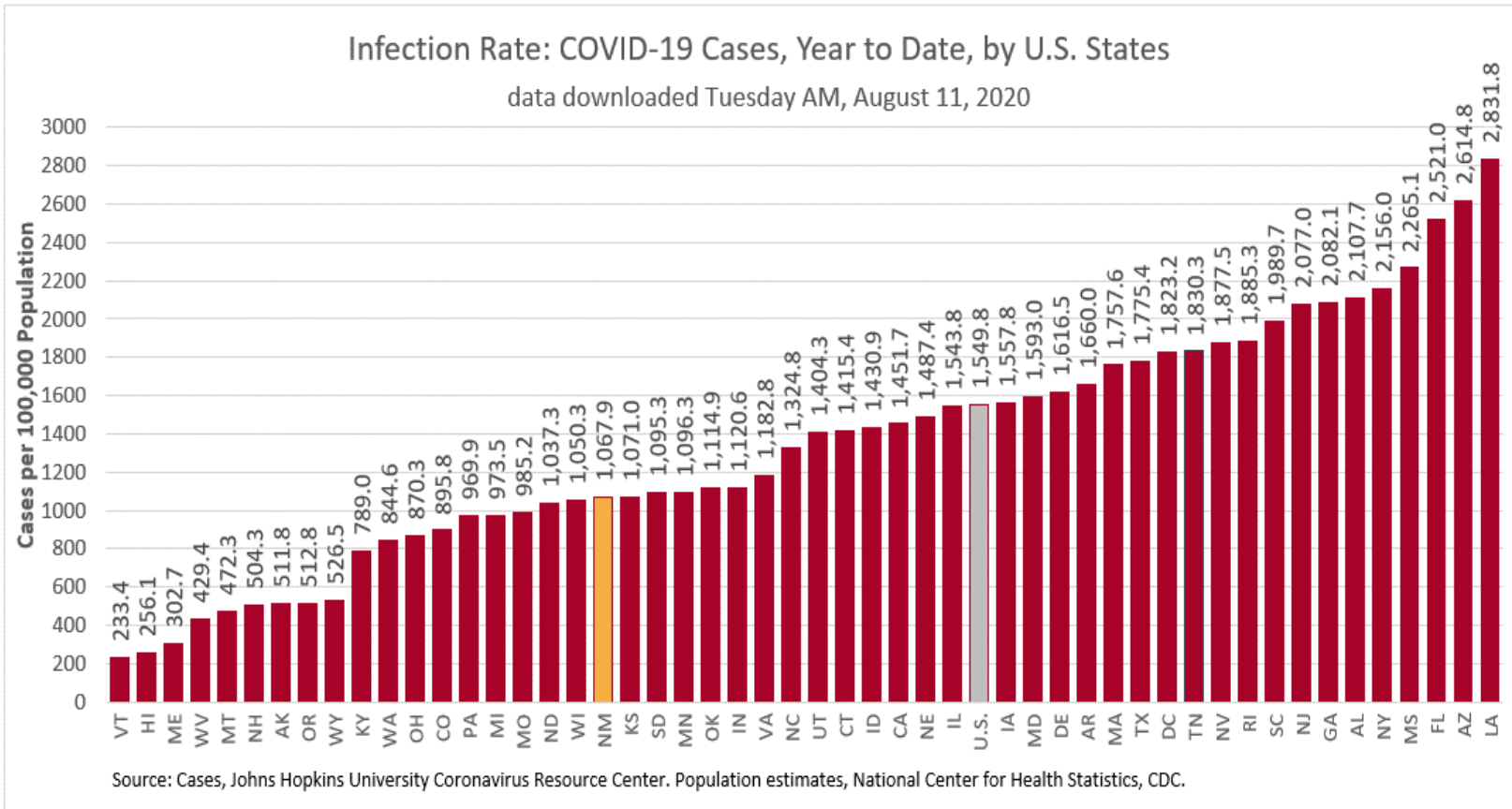


COVID-19 in New Mexico: Epidemiologic and Modeling Update

August 11, 2020

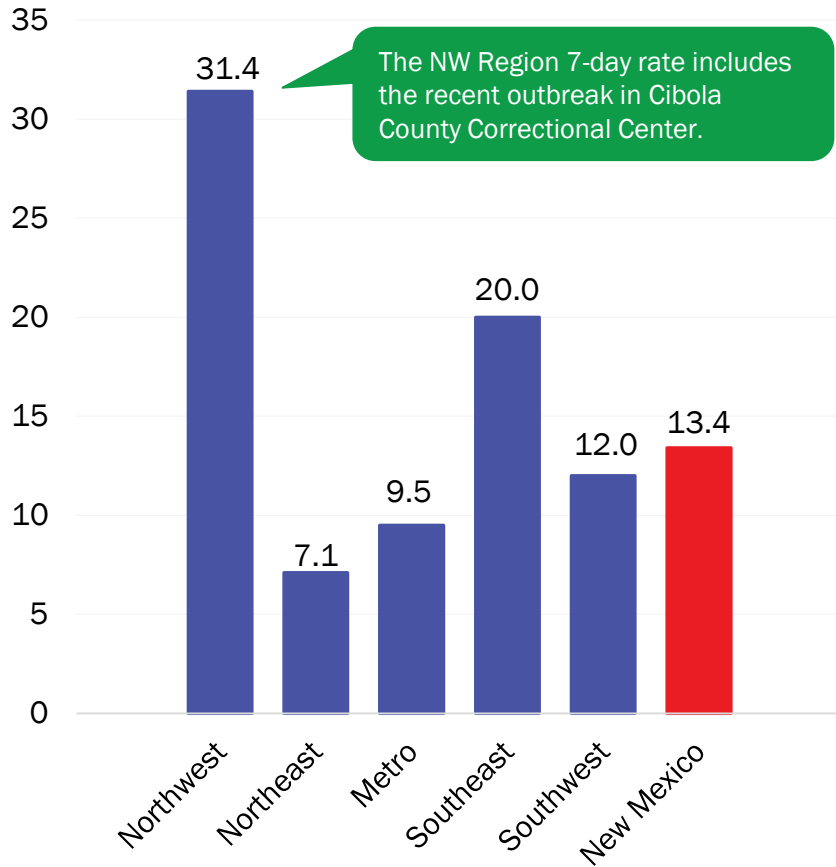
New Mexico has the 33rd highest prevalence in the United States



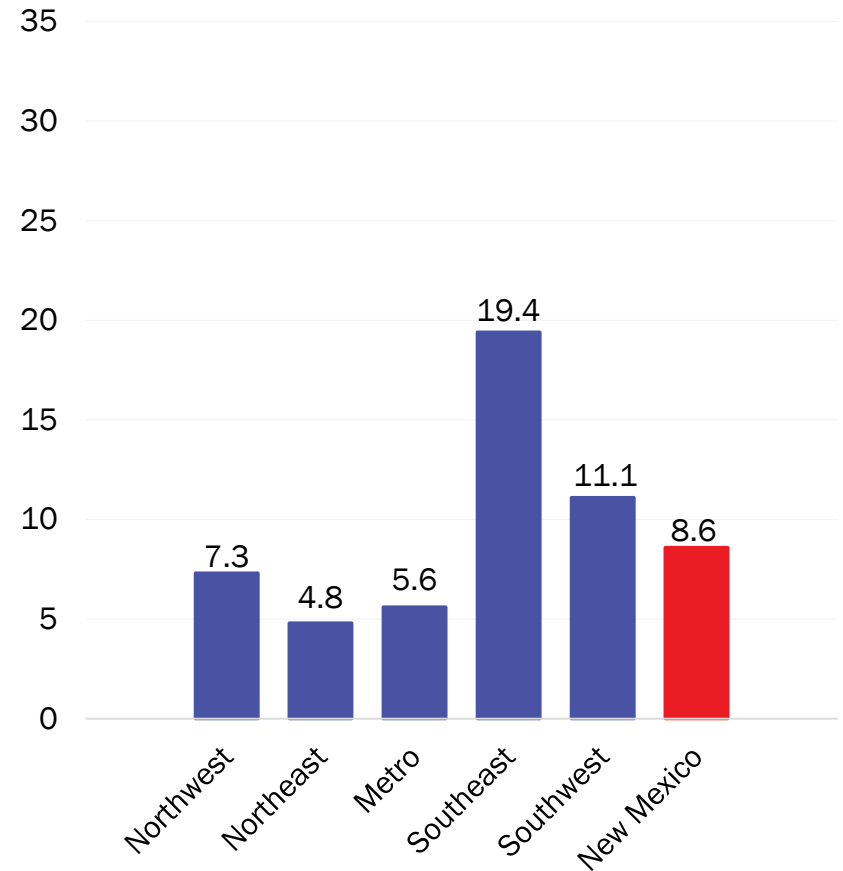
COVID-19 prevalence per 100,000 population

*Excludes cases in state and federal corrections and detention centers

New cases (Last 7 days) – August 3



New cases (Last 7 days) – August 9*



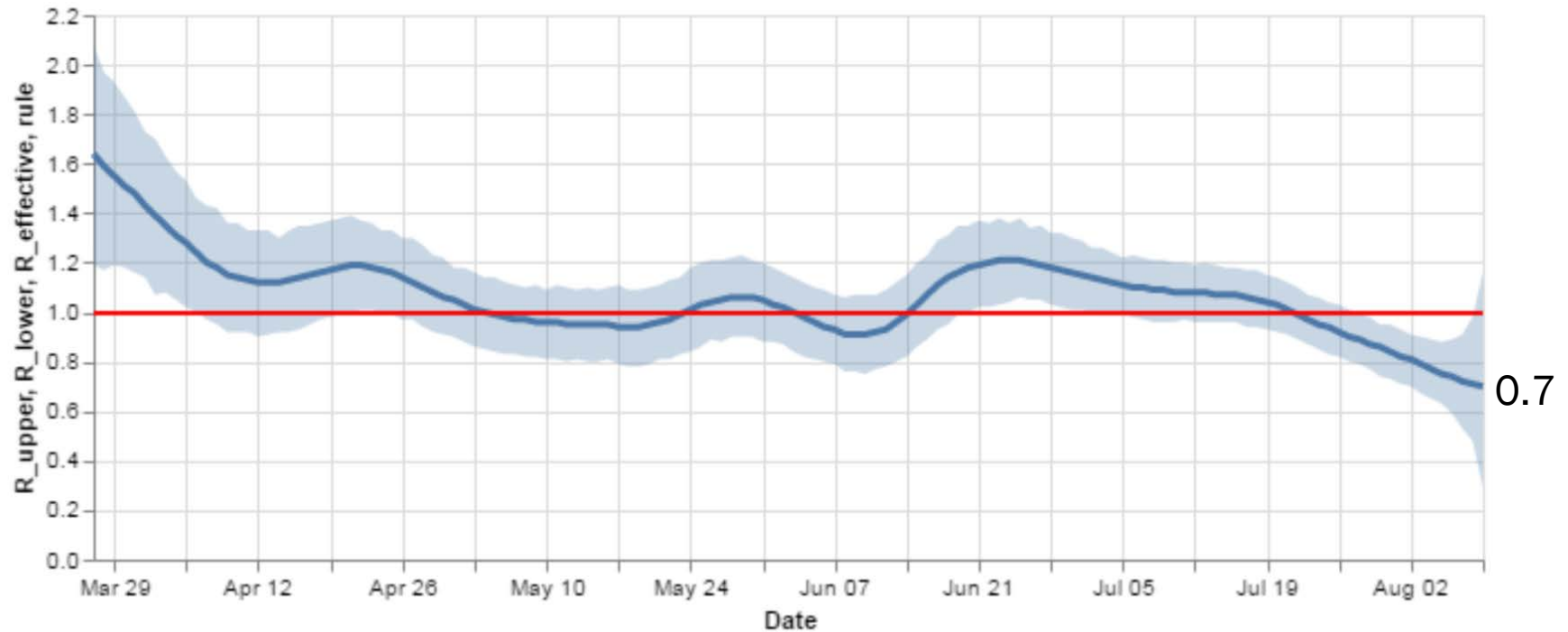
Source: Infectious Disease Epidemiology Bureau, Epidemiology and Response Division 8.9.2020, New Mexico Department of Health. Population estimates, UNM Geospatial and Population Studies Program.



Investing for tomorrow, delivering today.

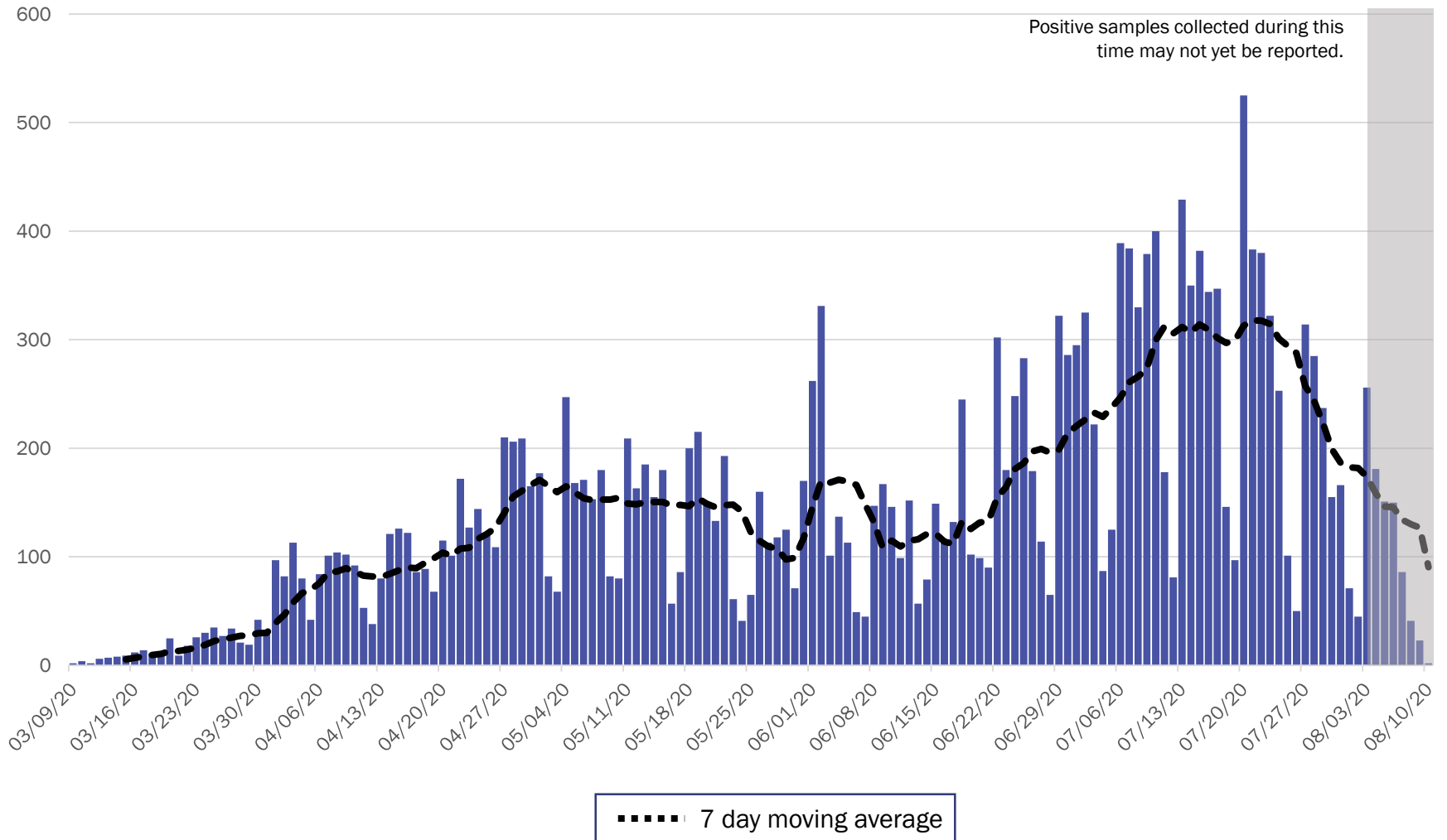
Statewide R-effective has decreased to 0.7.

R_effective over time, STATE



Courtesy of Presbyterian Healthcare Services – August 10, 2020.

New Mexico COVID-19 Cases by Date of Specimen Collection – August 11, 2020



Source: Infectious Disease Epidemiology Bureau, Epidemiology and Response Division 8.11.2020, New Mexico Department of Health.



Investing for tomorrow, delivering today.

1190 S. St. Francis Drive • Santa Fe, NM 87505 • Phone: 505-827-2613 • Fax: 505-827-2530 • nmhealth.org

Key

- Low Level Endemic <1.0
- Approaching Low Level Endemic 1.0-1.05
- Requiring further mitigation >1.05

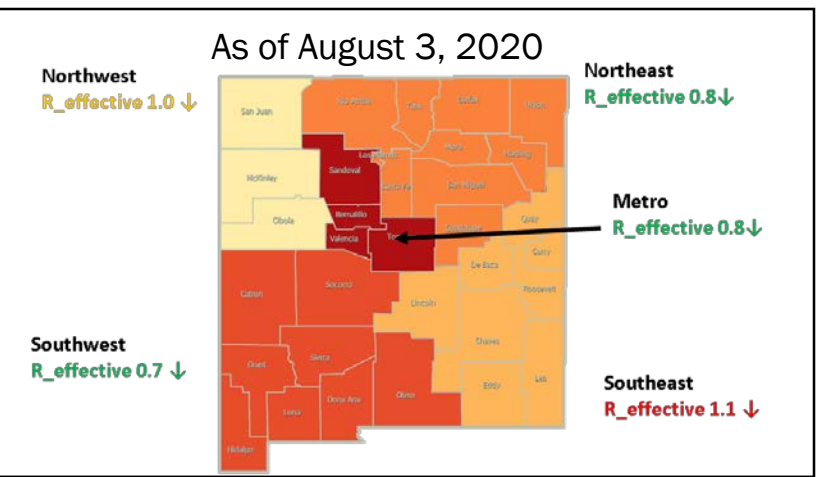
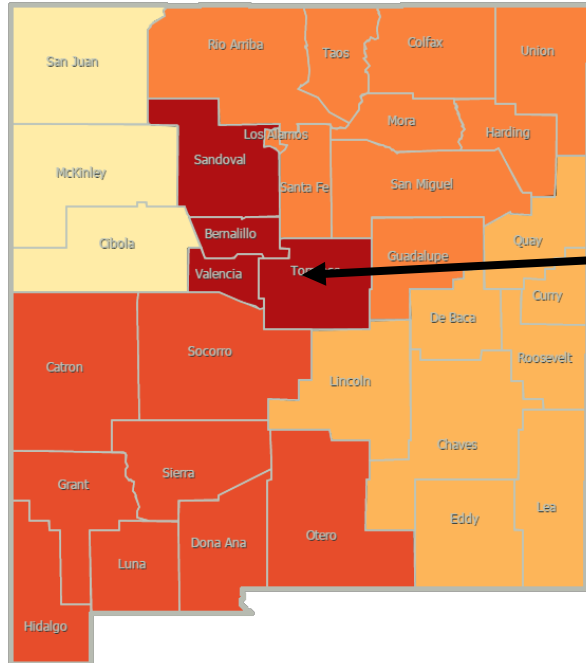
Northwest
R_effective 0.2 ↓

Northeast
R_effective 0.7 ↓

Metro
R_effective 0.6 ↓

Southwest
R_effective 0.8 ↑

Southeast
R_effective 1.0 ↓



Region	R-effective	95% Confidence Interval
State	0.7	[0.3, 1.2]
Metro	0.6	[0.0, 1.4]
Northeast	0.7	[0.0, 2.6]
Northwest	0.2	[0.0, 0.9]
Southeast	1.0	[0.2, 1.9]
Southwest	0.8	[0.0, 1.7]

Courtesy of Presbyterian Healthcare Services – August 10, 2020.

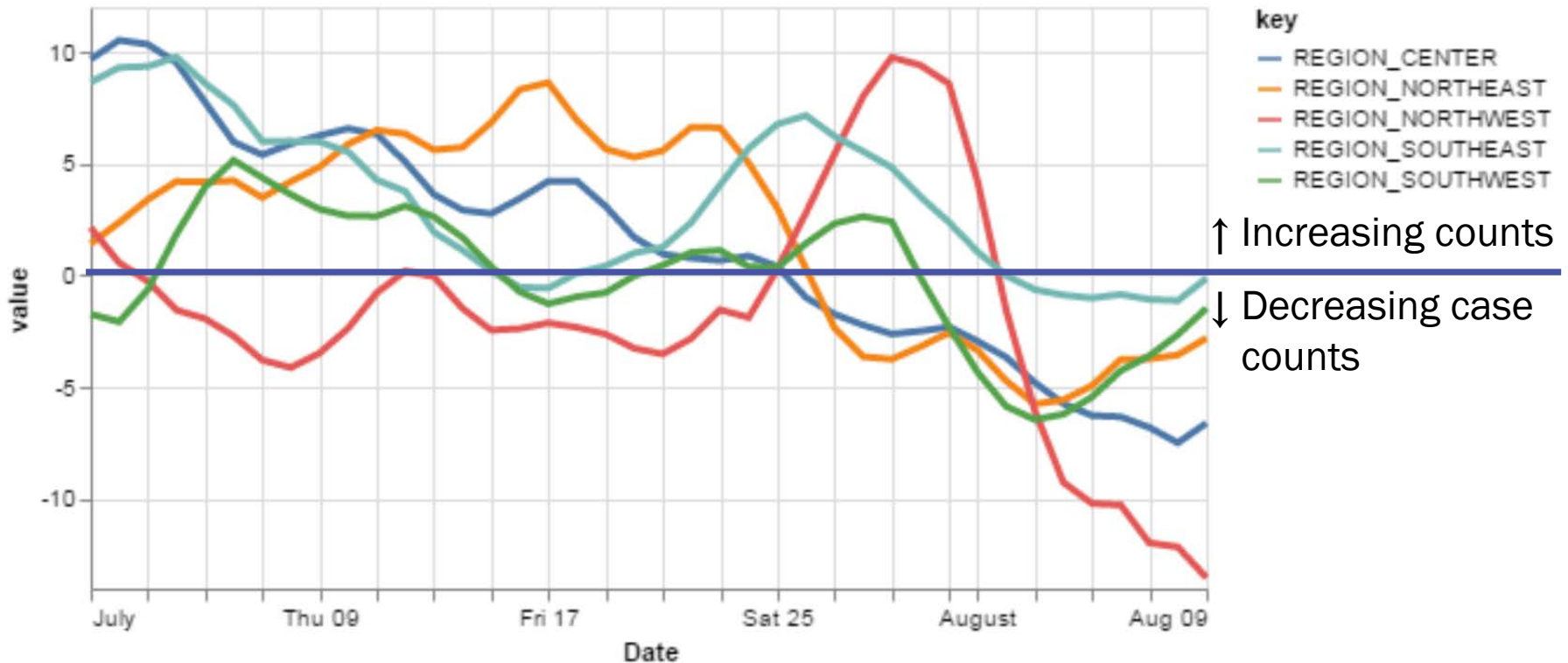


Investing for tomorrow, delivering today.



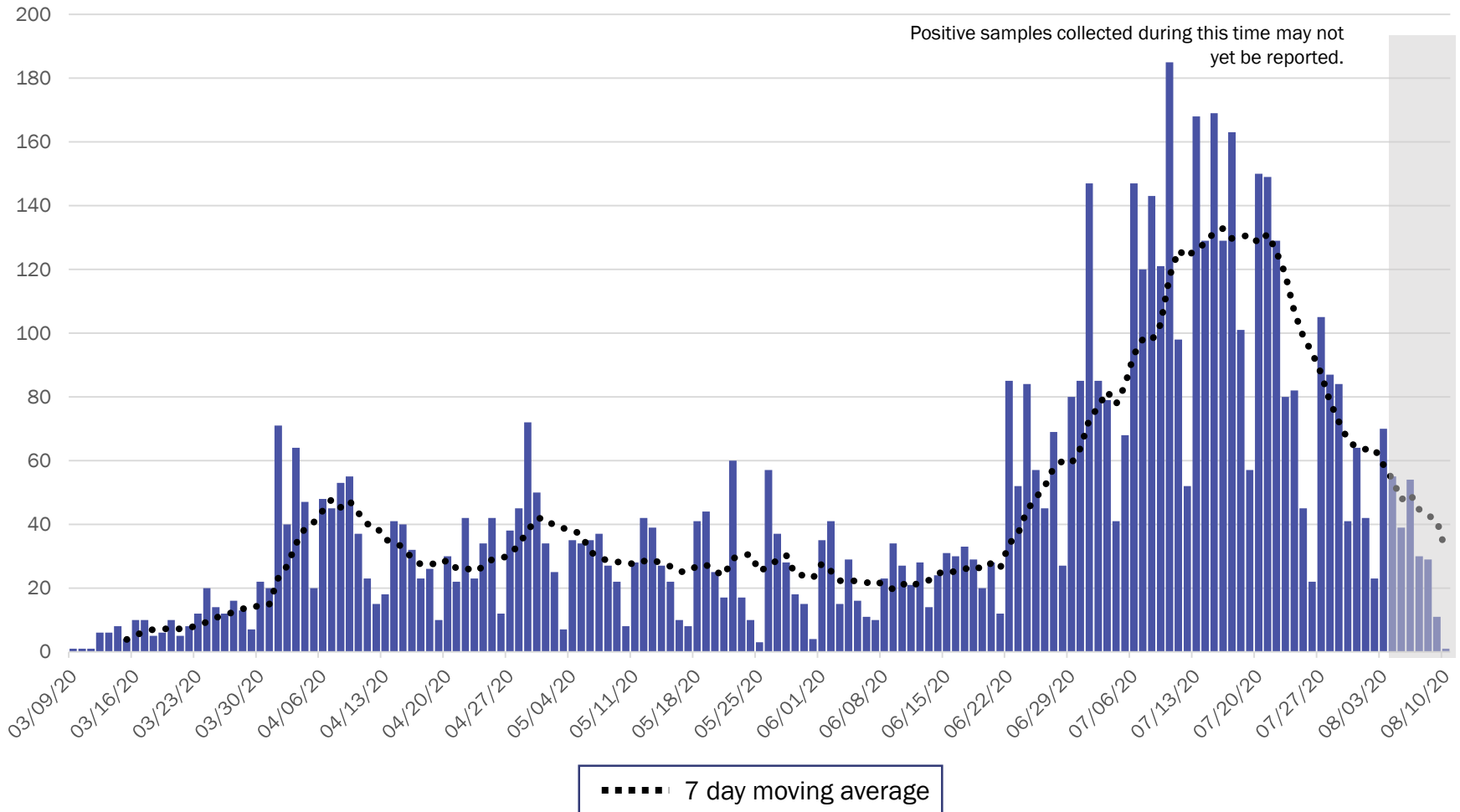
All regions have a relative growth rate less than 0.

14-day relative growth rate (%), Regions



Courtesy of Presbyterian Healthcare Services – August 10, 2020.

Metro Region Case Count by Collection Date with 7 Day Moving Average August 11, 2020



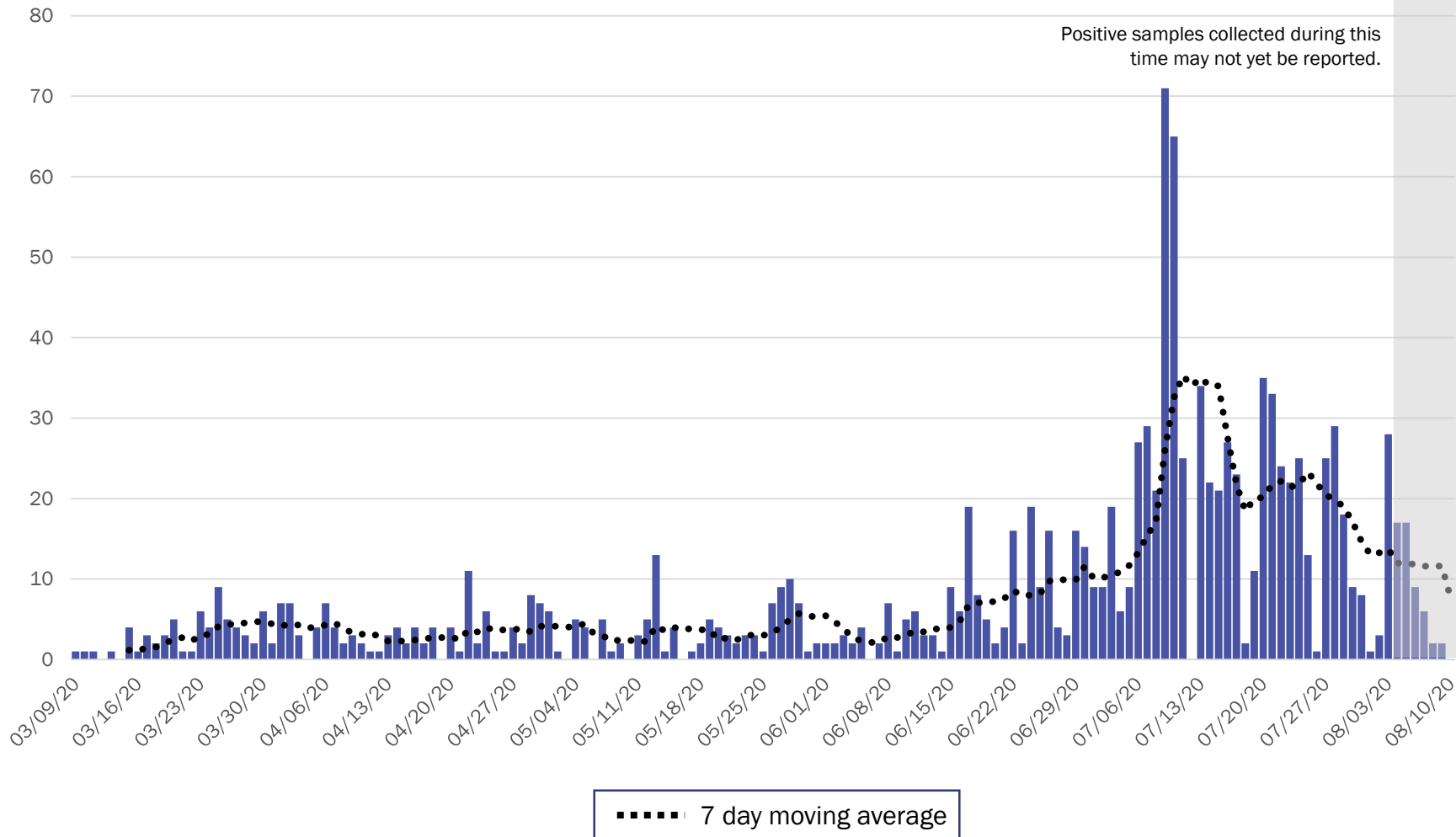
Source: Infectious Disease Epidemiology Bureau, Epidemiology and Response Division 8.11.2020, New Mexico Department of Health.



Investing for tomorrow, delivering today.

1190 S. St. Francis Drive • Santa Fe, NM 87505 • Phone: 505-827-2613 • Fax: 505-827-2530 • nmhealth.org

Northeast Region Case Count by Collection Date with 7 Day Moving Average August 11, 2020



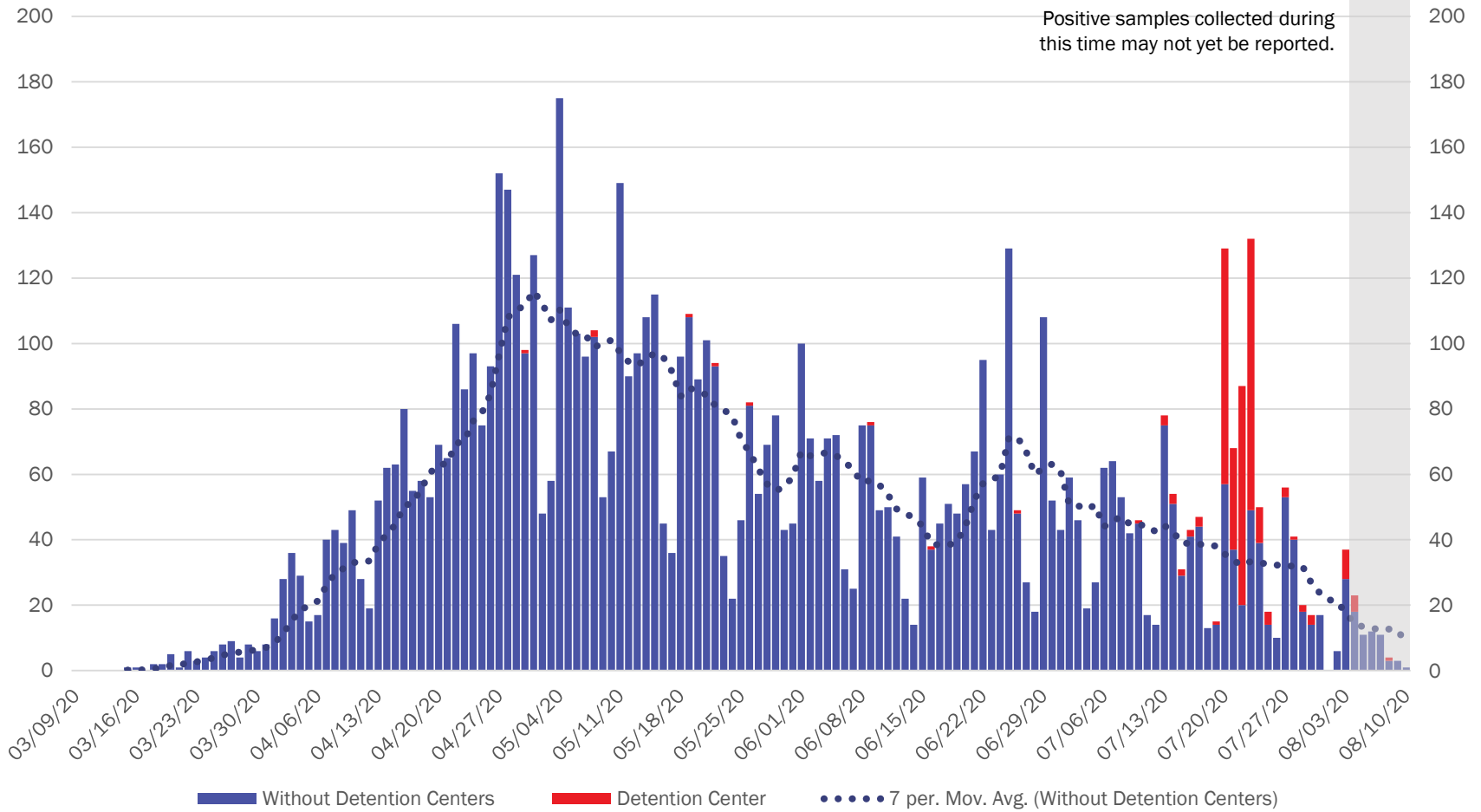
Source: Infectious Disease Epidemiology Bureau, Epidemiology and Response Division 8.11.2020, New Mexico Department of Health.



Investing for tomorrow, delivering today.

1190 S. St. Francis Drive • Santa Fe, NM 87505 • Phone: 505-827-2613 • Fax: 505-827-2530 • nmhealth.org

Northwest Region Case Count by Collection Date with 7 Day Moving Average August 11, 2020



Source: Infectious Disease Epidemiology Bureau, Epidemiology and Response Division 8.11.2020, New Mexico Department of Health.



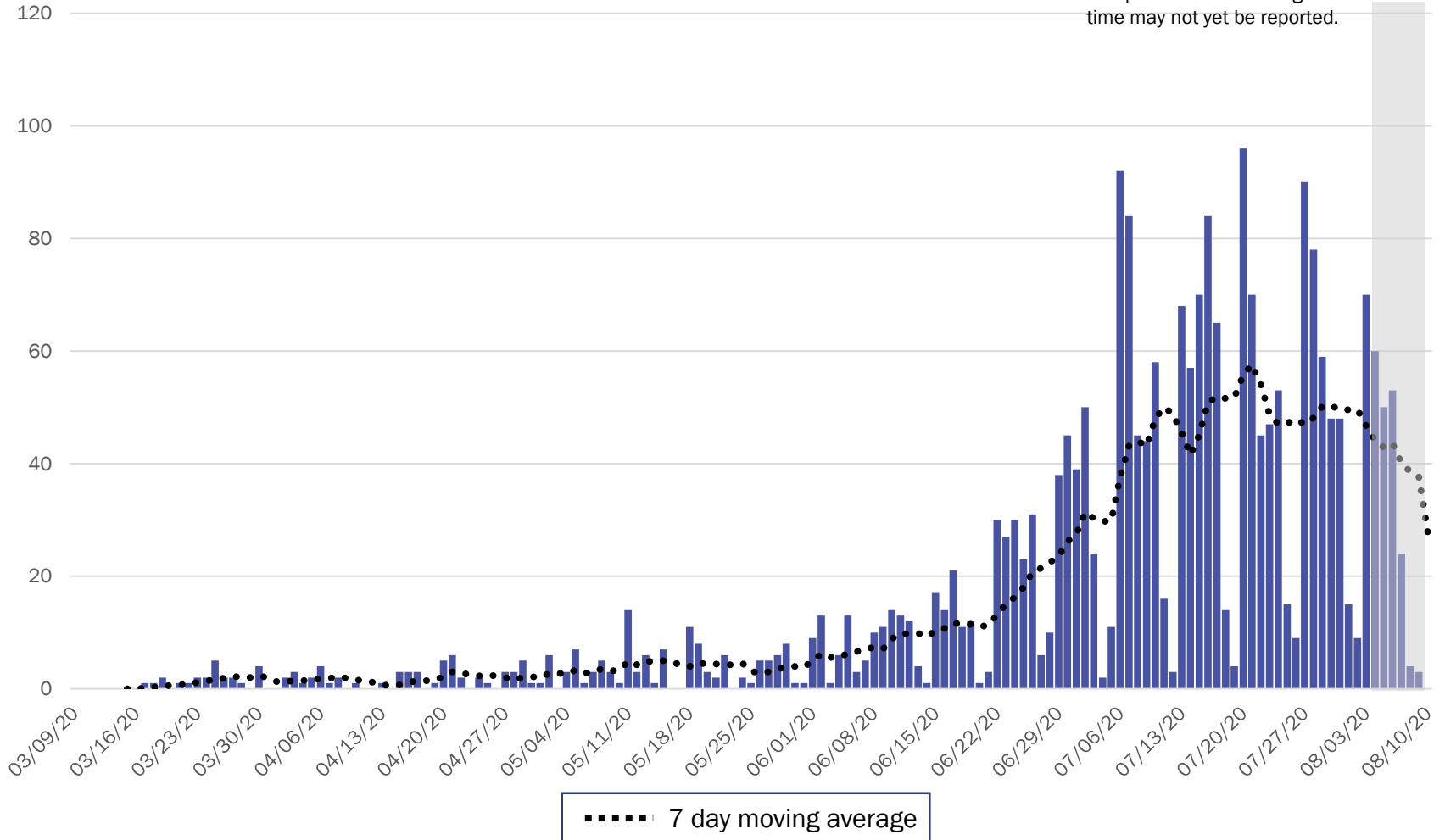
Investing for tomorrow, delivering today.

1190 S. St. Francis Drive • Santa Fe, NM 87505 • Phone: 505-827-2613 • Fax: 505-827-2530 • nmhealth.org

Southeast Region Case Count by Collection Date with 7 Day Moving Average

August 11, 2020

Positive samples collected during this time may not yet be reported.



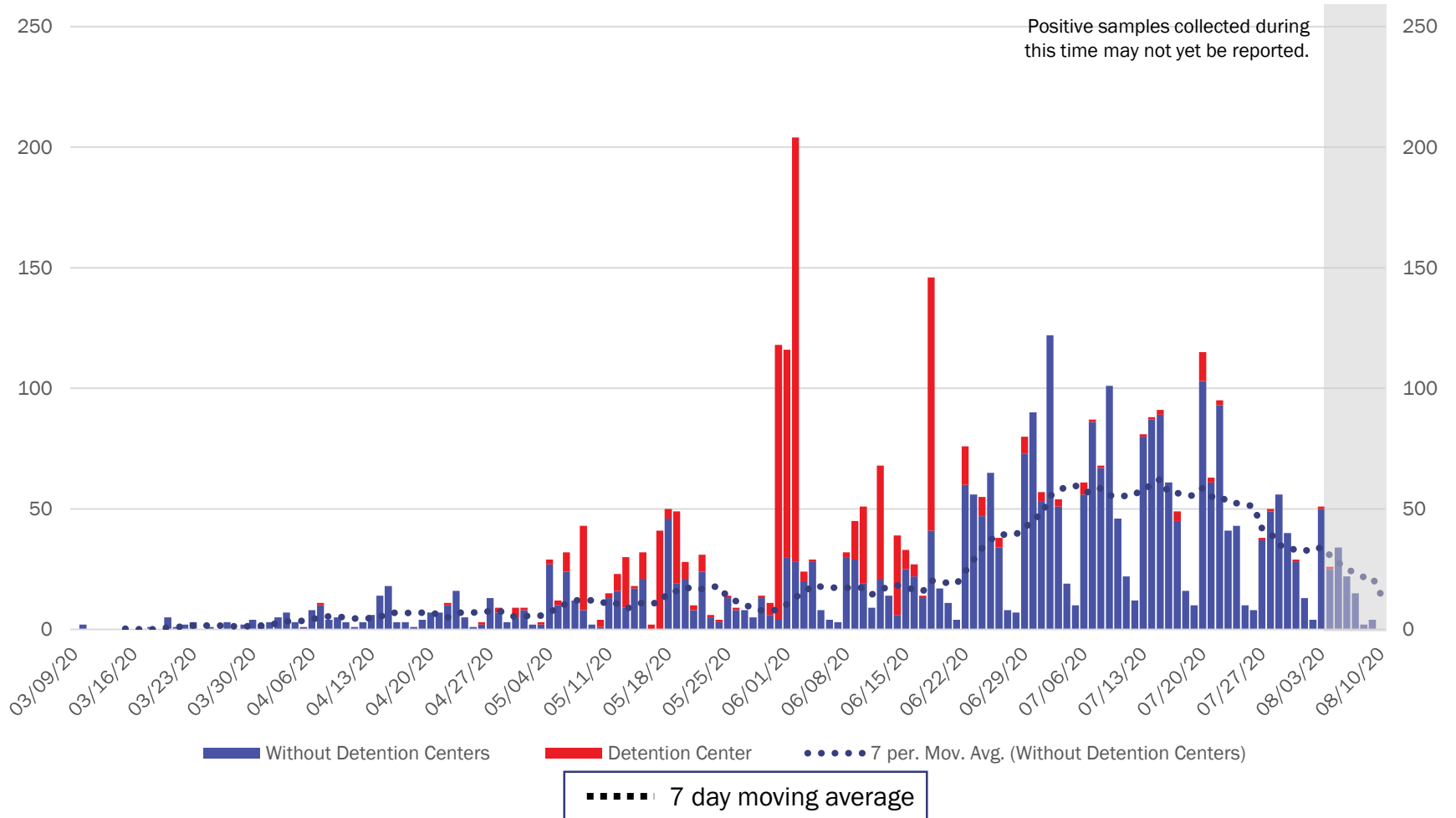
Source: Infectious Disease Epidemiology Bureau, Epidemiology and Response Division 8.11.2020, New Mexico Department of Health.



Investing for tomorrow, delivering today.

1190 S. St. Francis Drive • Santa Fe, NM 87505 • Phone: 505-827-2613 • Fax: 505-827-2530 • nmhealth.org

Southwest Region Case Count by Collection Date with 7 Day Moving Average August 11, 2020

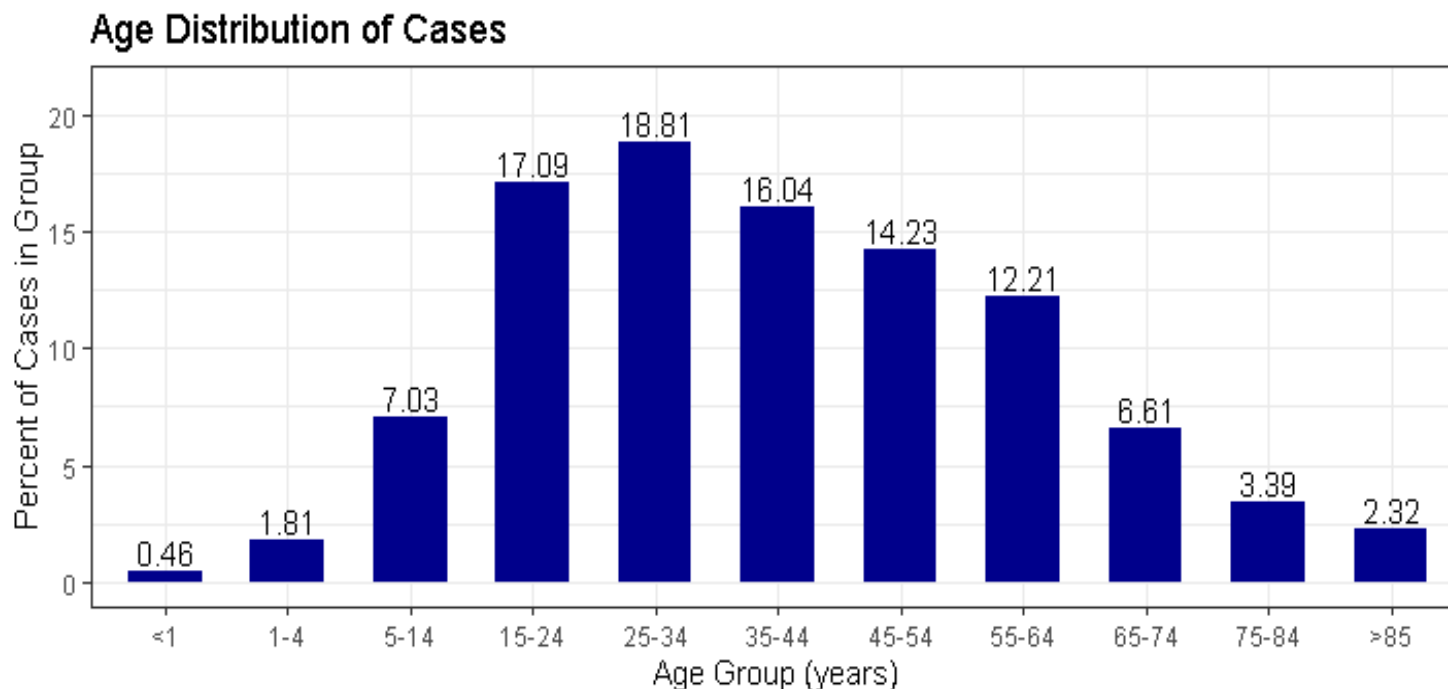


Source: Infectious Disease Epidemiology Bureau, Epidemiology and Response Division 8.11.2020, New Mexico Department of Health.



Investing for tomorrow, delivering today.

Currently the highest percentage of cases are between 25-34 years old (~19%).

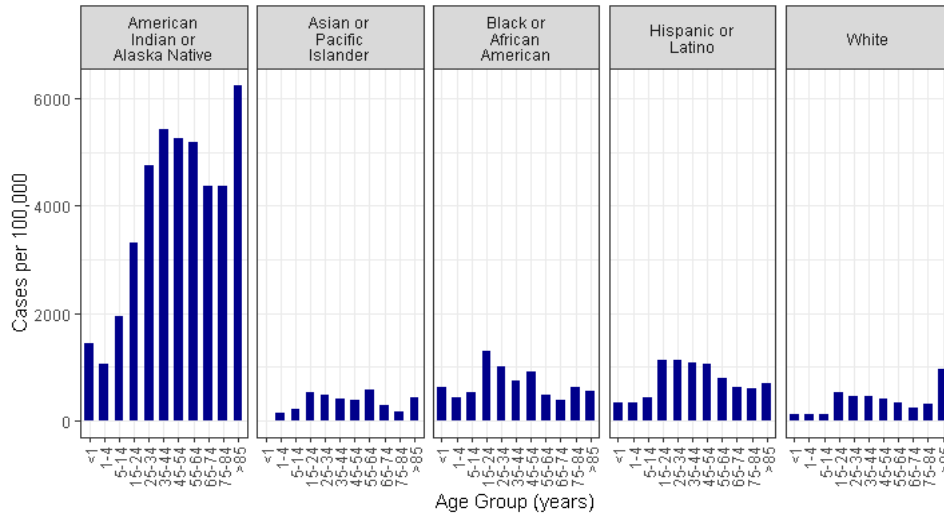


Note: Excludes out-of-state cases and cases in state and federal corrections and detention centers

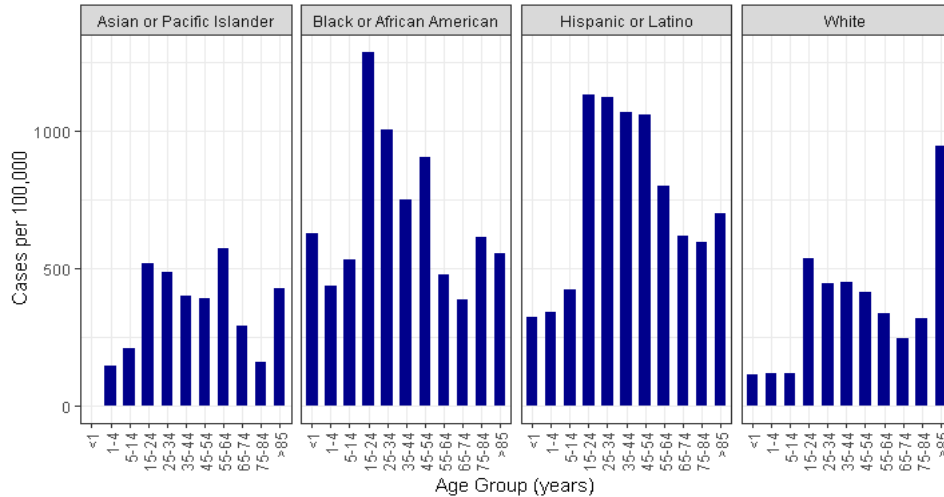
As of August 10, 2020

American Indian/Alaska Native have the highest case rates across all ages compared to other race/ethnicity groups.

Case rates per 100,000 by age group and race and ethnicity



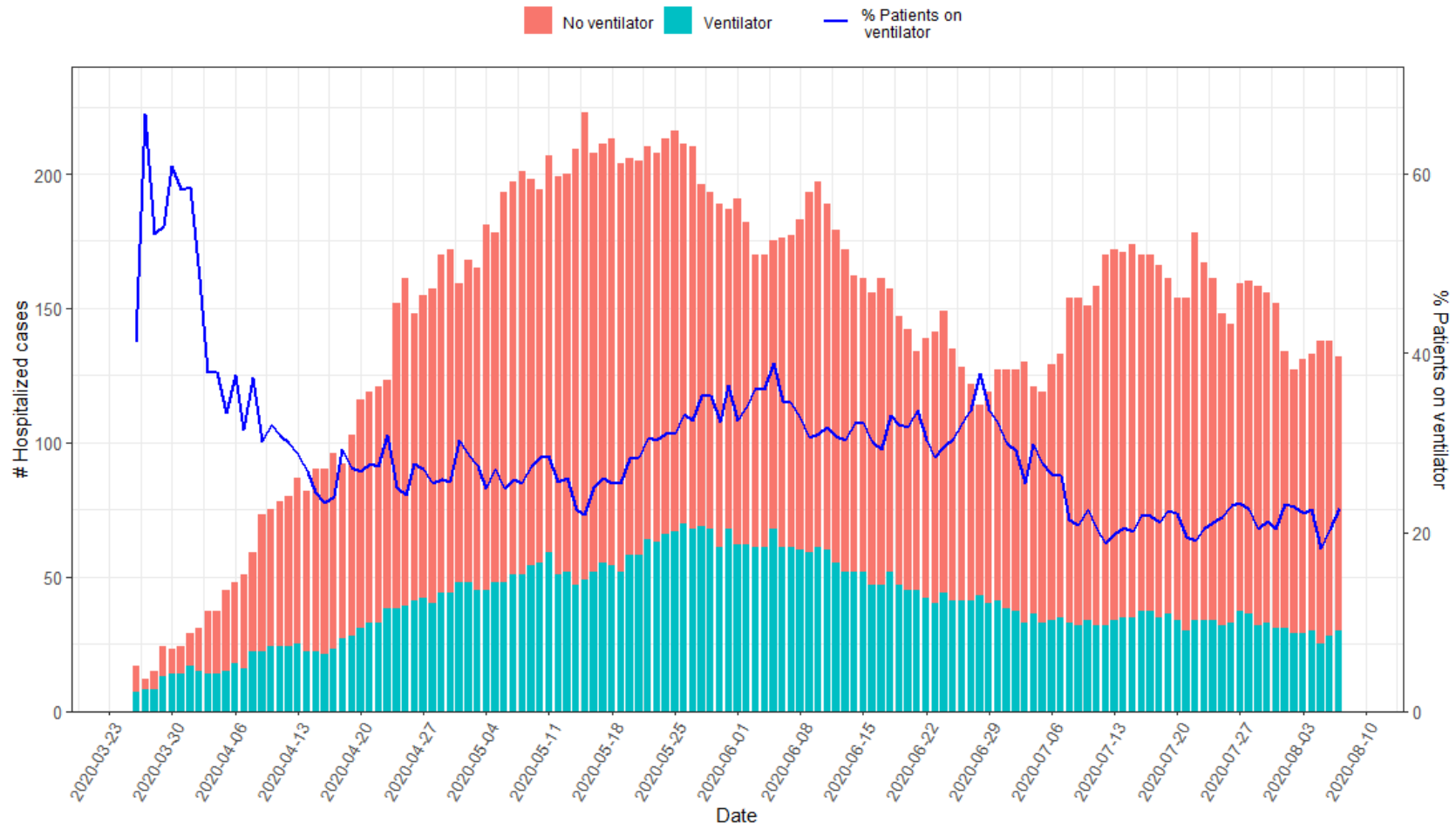
Excluding AI/AN, Black or African American and Hispanic or Latino groups are also disproportionately affected across most age groups.



Note: Excludes out-of-state cases and cases in state and federal corrections and detention centers

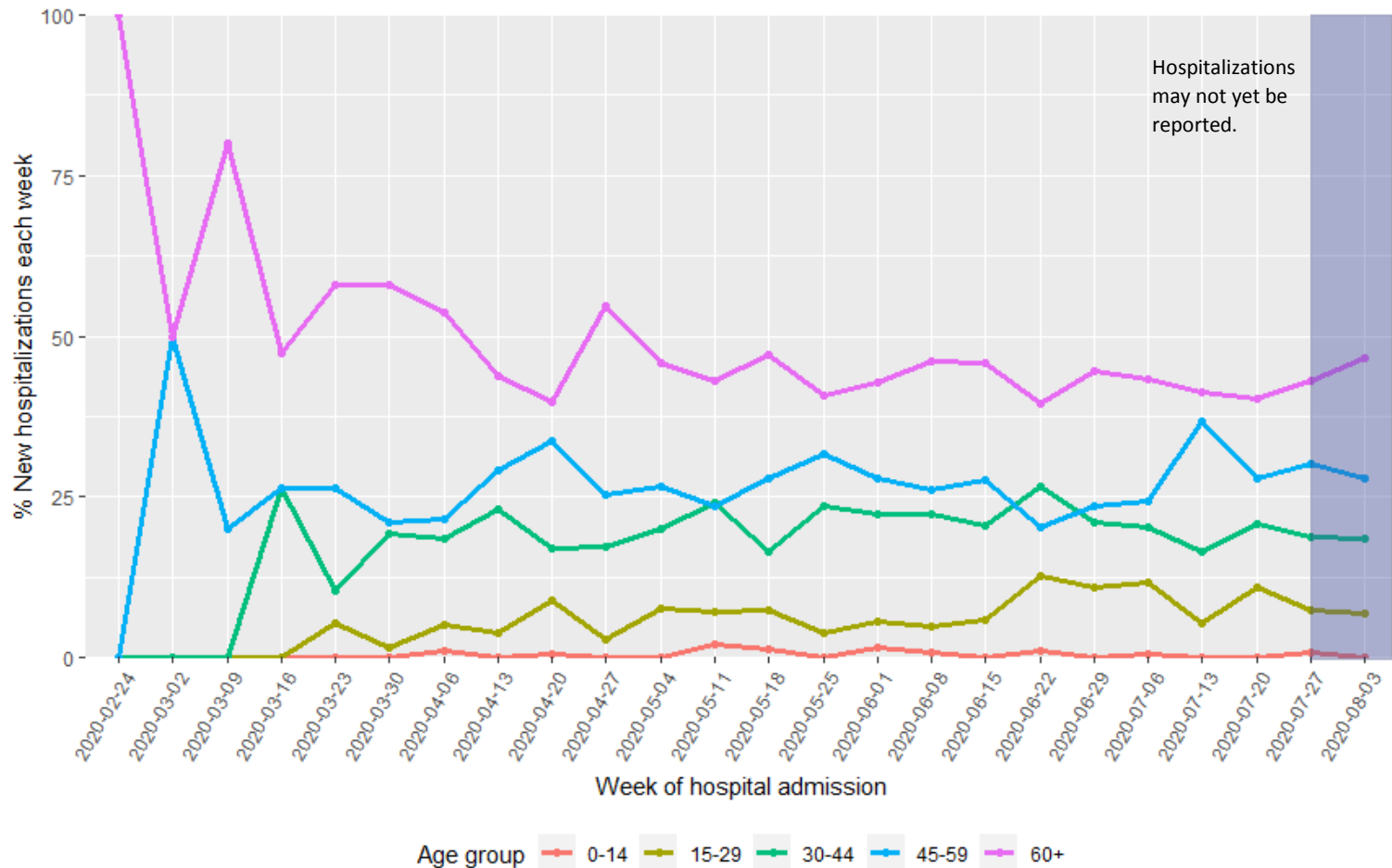
As of August 10, 2020

Hospitalizations have been steadily declining since mid-July. As of 8/10, 21% of patients are on ventilators.



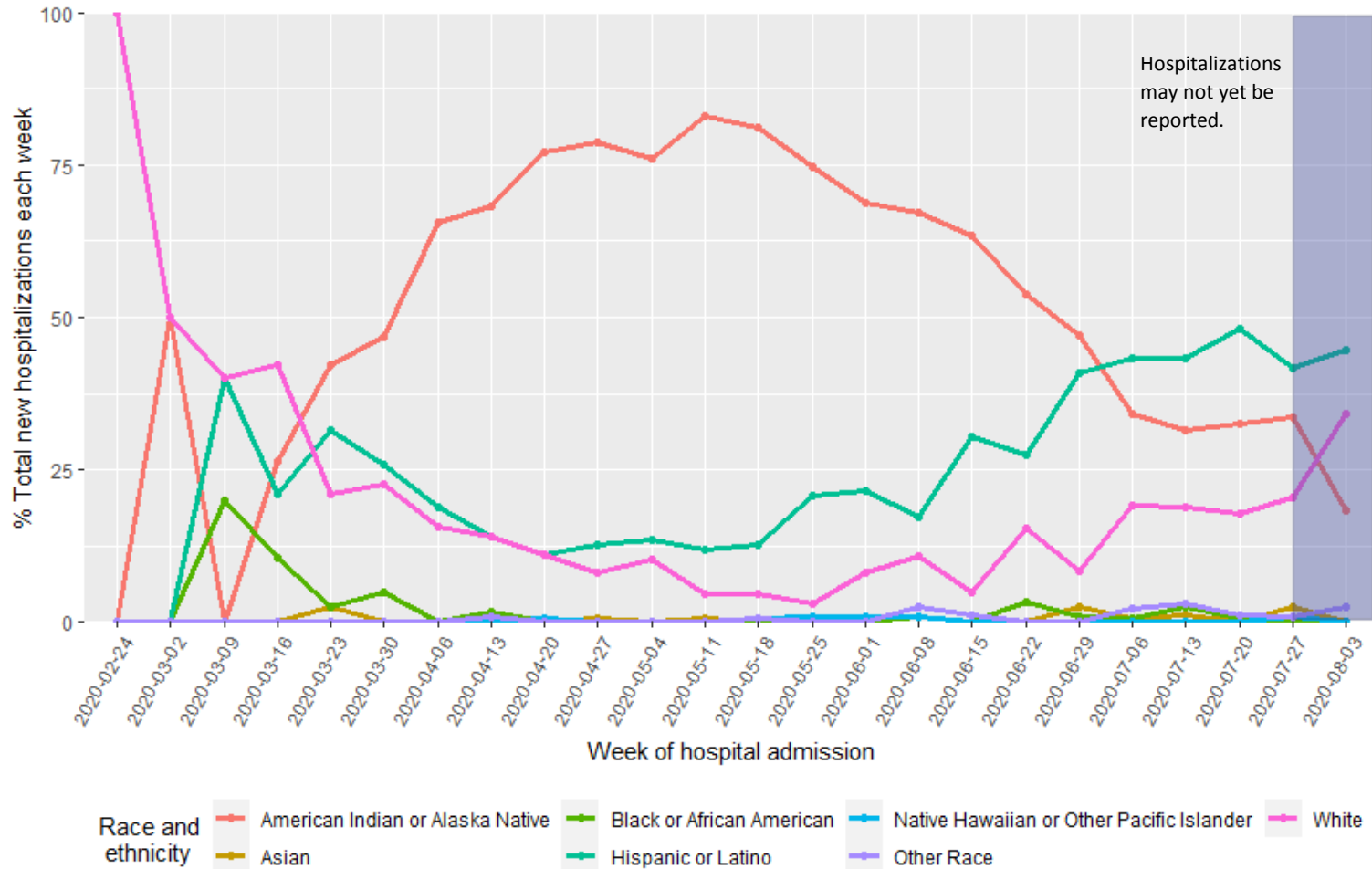
As of August 7, 2020

The 45-59 and 60+ year old age groups make up the highest percentages of new hospital admissions each week.



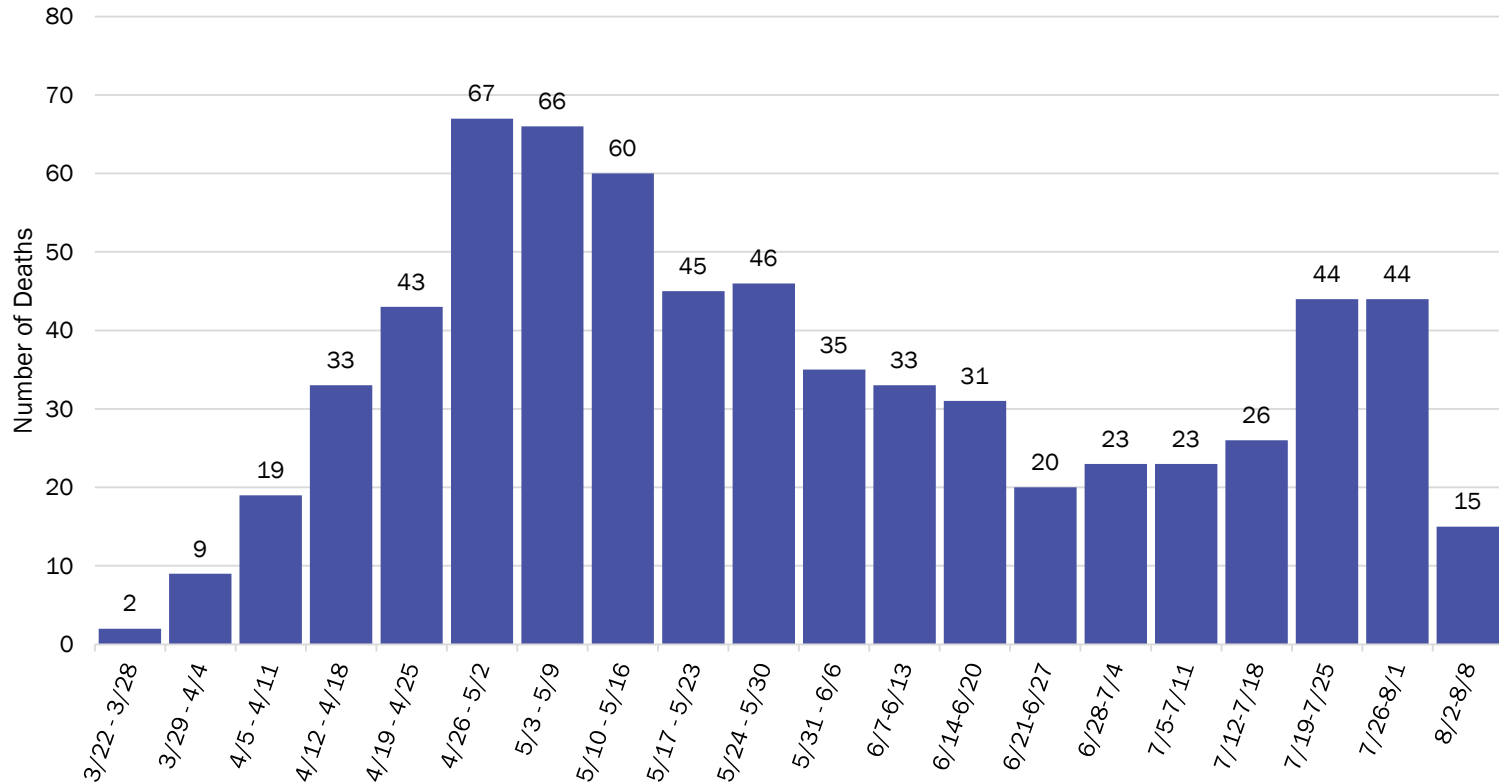
As of August 7, 2020

New hospital admissions of patients who are Hispanic or Latino, or White are continuing to increase each week. Admissions of AI/AN patients have been steadily decreasing.



Spike in deaths from 7/19 to 8/1, but decreased last week.

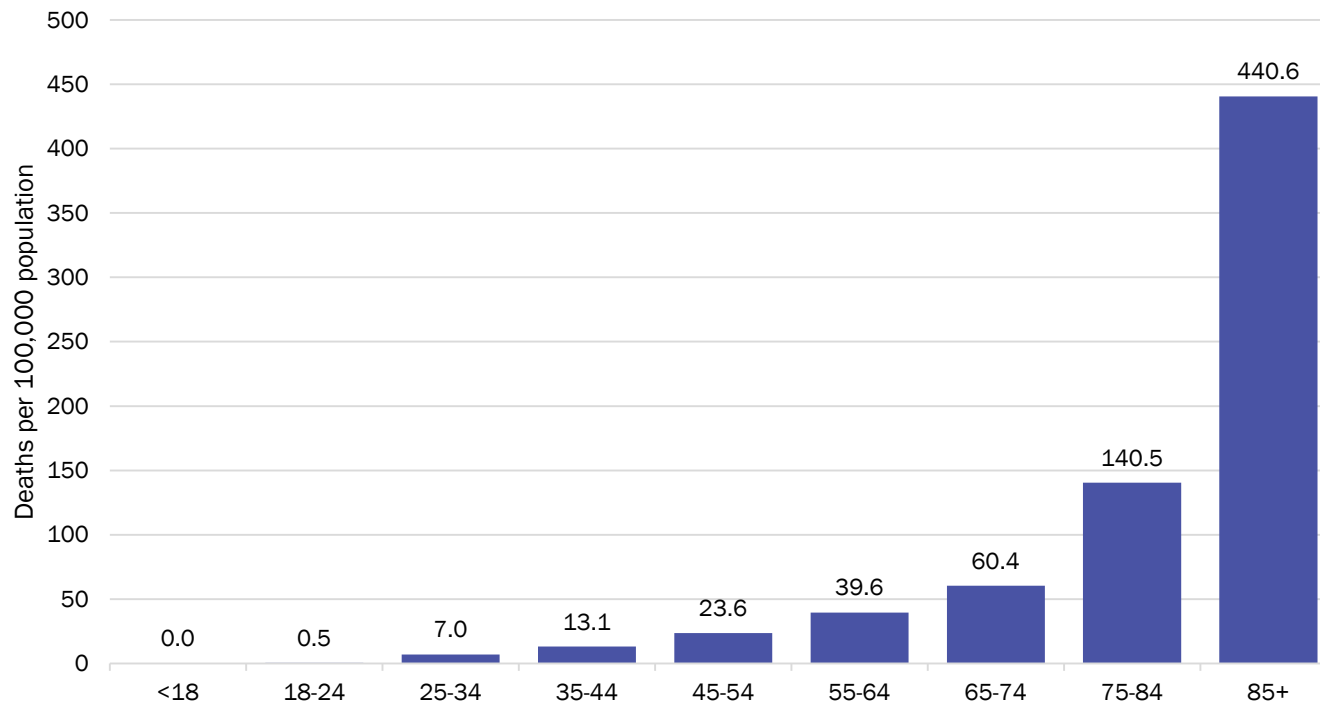
COVID-19 Deaths by Week of Death, New Mexico



Reporting through 8/9/2020

The trend of increasing mortality with age remains unchanged.

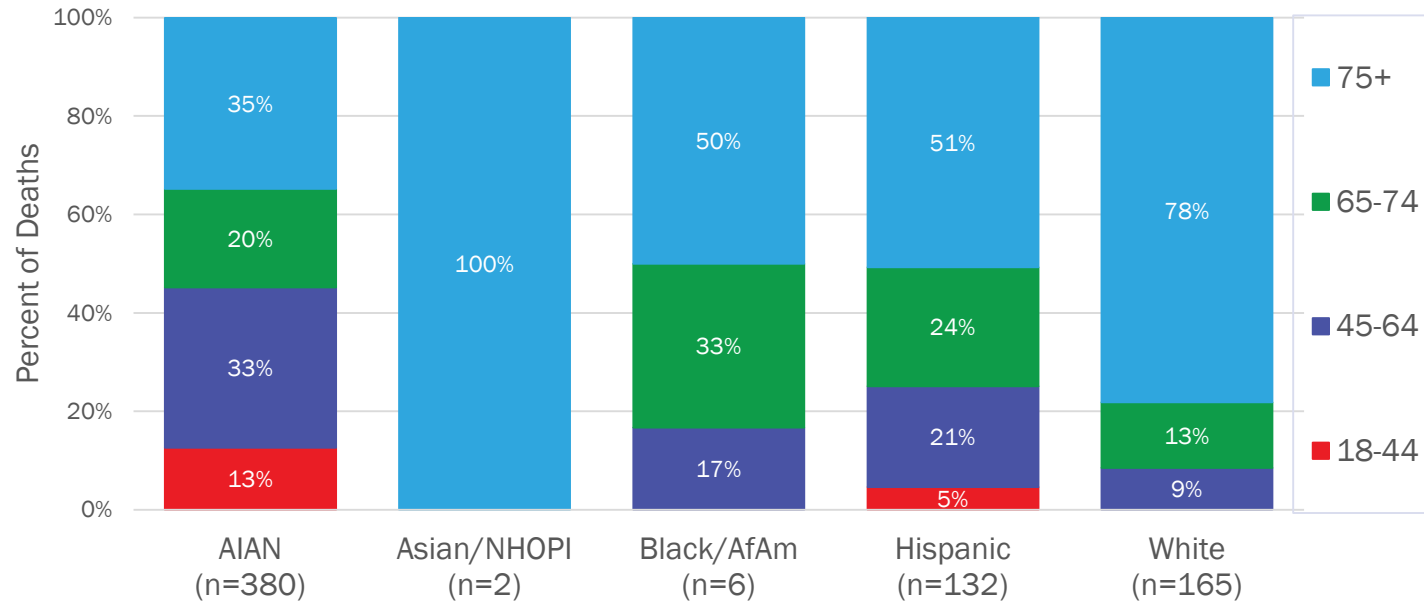
COVID-19 Mortality Rate by Age Group,
New Mexico



Reporting through 8/9/2020

Highest percentage of deaths in the 65+ age groups is observed across all race and ethnicity groups. In AI/AN, Black or African American, and Hispanic or Latino groups, 17-33% of deaths were 45-64 years old.

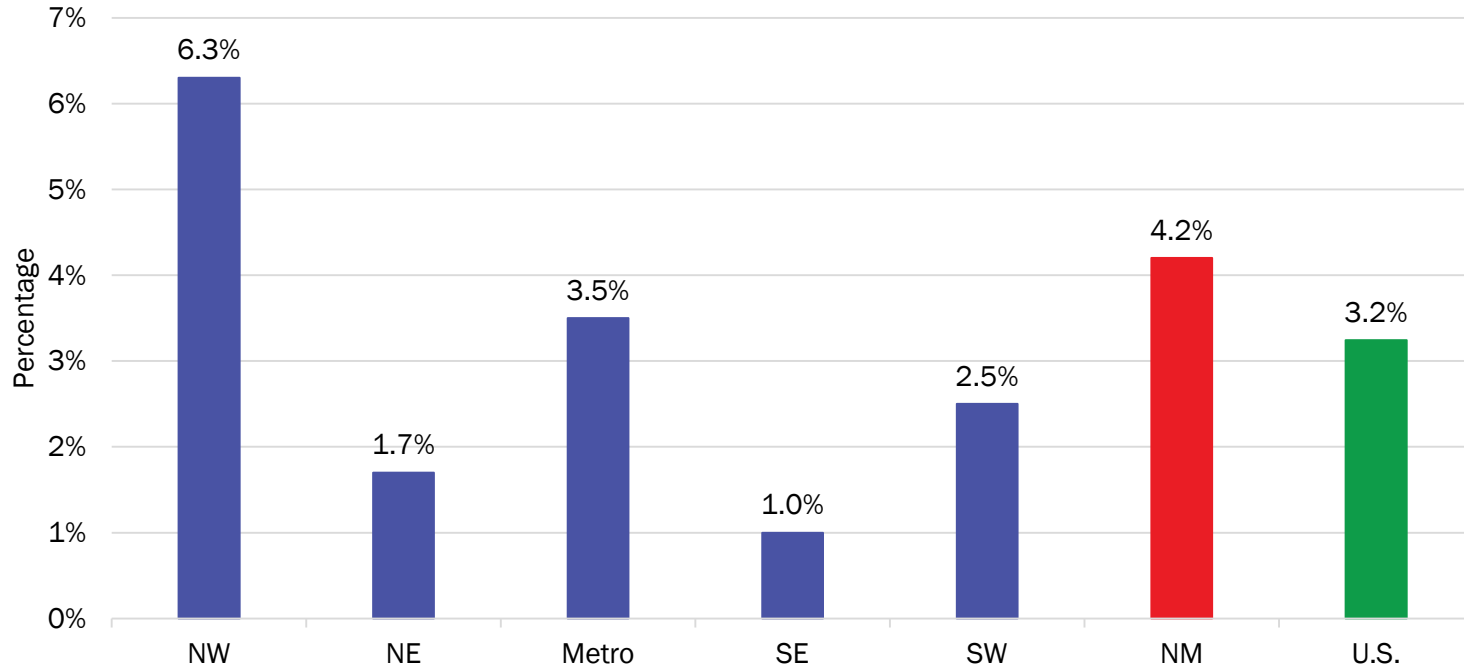
COVID-19 Deaths by Race/Ethnicity and Age Group, New Mexico



Reporting through 8/9/2020

Minimal changes in case fatality rates by region since last week.

COVID-19 Age-Adjusted* Case Fatality Rate by Region, New Mexico



Reporting through 8/9/2020; *Adjusted to U.S. COVID-19 cases.

Note: Age-adjusted case fatality rates are adjusted to the current distribution of U.S. COVID-19 cases on 8/9. <https://www.cdc.gov/covid-data-tracker/index.html#demographics>

CDC age group categories differ from those previously reported, so the age-adjusted rates for NM are not comparable to previously produced rates.

Source: Bureau of Vital Records and Health Statistics and Infectious Disease Epidemiology Bureau, Epidemiology and Response Division, reporting through 8.9.2020, New Mexico Department of Health.

New Mexico Status Updates

- Case count: Statewide, the increase in daily case counts continues to decline.
- Hospitalizations: After a period of increase in July, hospitalizations are decreasing.
- Deaths: After two large spikes recently, deaths decreased last week.
- Social distancing: Cell phone data suggests the mobility of New Mexico residents has been stable, but this varies by region.
- Contact tracing: The median time to quarantine for contacts identified last week was 1.2 days.

Supplementary Slides

Modeling Assumptions

Variable	Measured Value	Value as of 8.31020
R_Effective	Actual Measured Daily Value by key county	R_eff=0.7
Positive Test Multiplier	Calculated by LANL	4.0
Hospitalization and Mortality	Actual rolling value / estimated number of total infected	Medical 0.18% ICU 0.12% Vent Rate 55% of ICU Crude Case Fatality Rate 4.0%
Length of Stay	Actual rolling value / estimated number of total infected	Medical 5 days ICU 14 days ICU on Vent 14 days