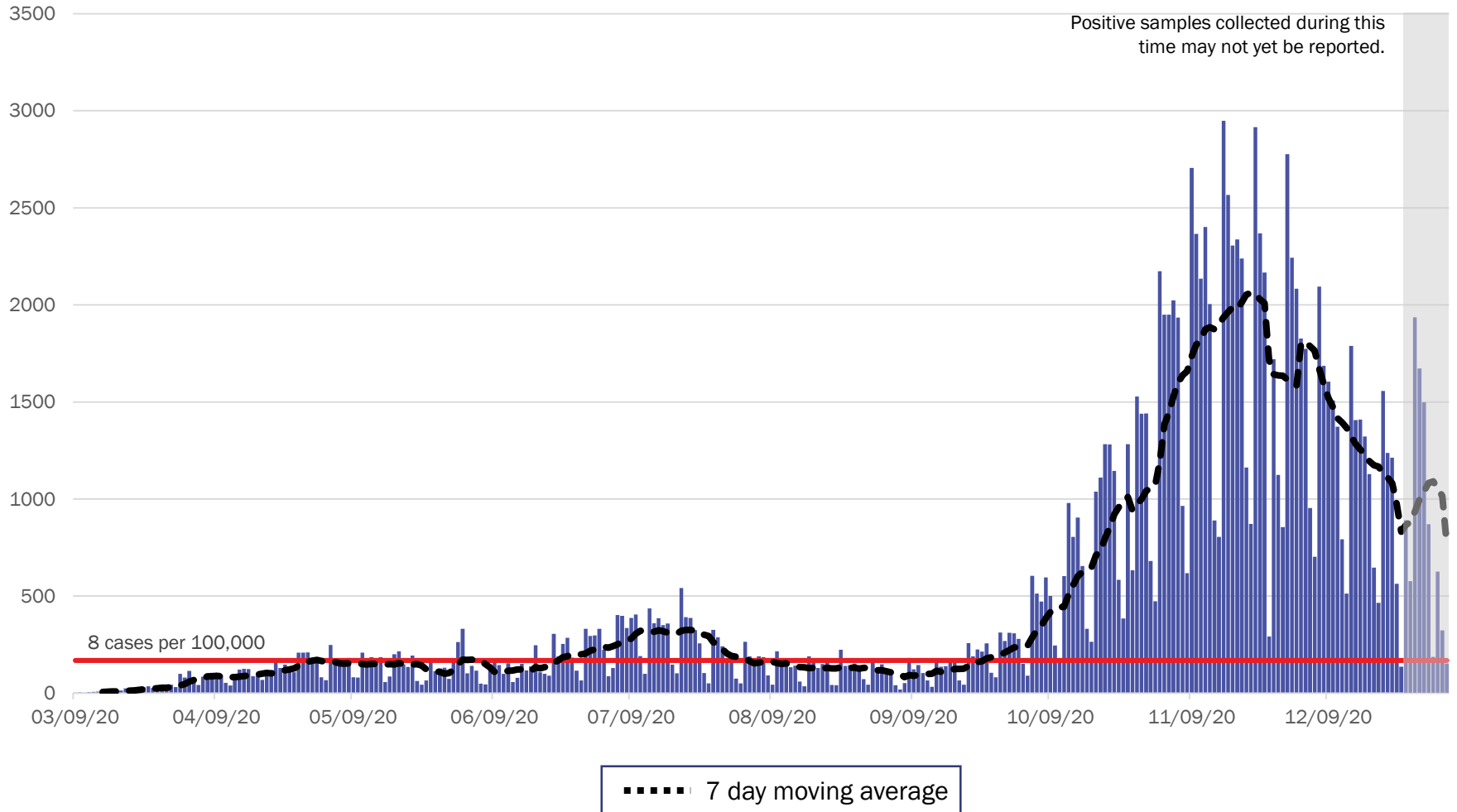


# COVID-19 in New Mexico: Epidemiologic and Modeling Update

January 5, 2020

# New Mexico COVID-19 Cases by Date of Specimen Collection – January 5, 2021



Source: Infectious Disease Epidemiology Bureau, Epidemiology and Response Division 1.5.2021, New Mexico Department of Health.

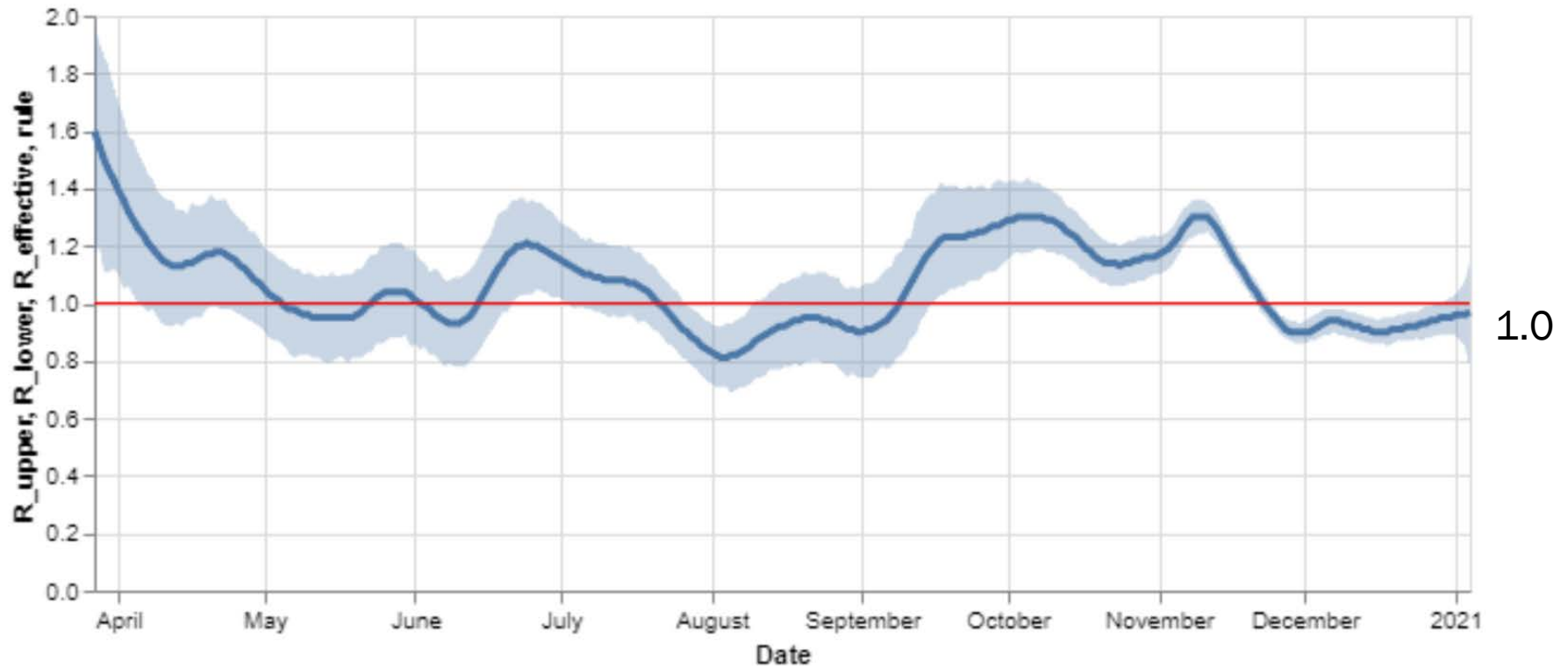


*Investing for tomorrow, delivering today.*

1190 S. St. Francis Drive • Santa Fe, NM 87505 • Phone: 505-827-2613 • Fax: 505-827-2530 • nmhealth.org

# Statewide R-effective has increased to 1.0.

## R\_effective over time, STATE



1.0

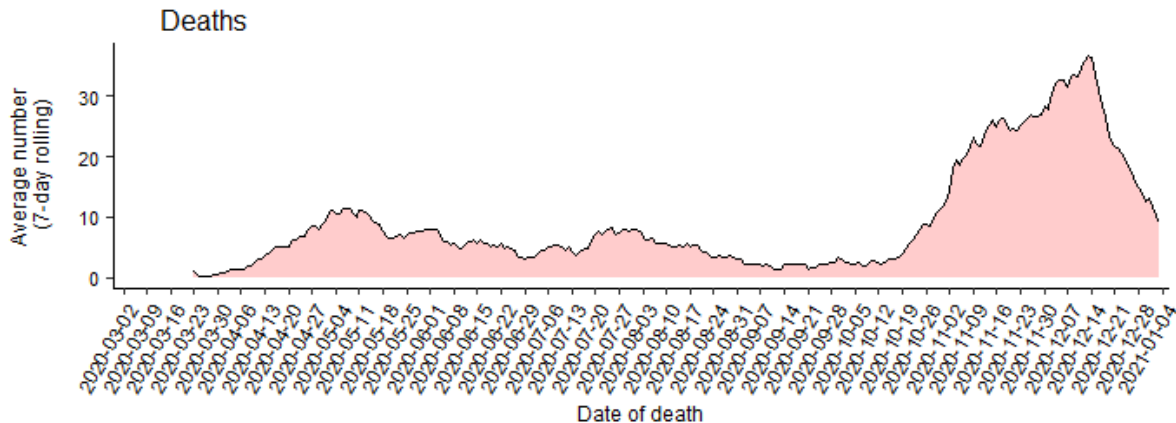
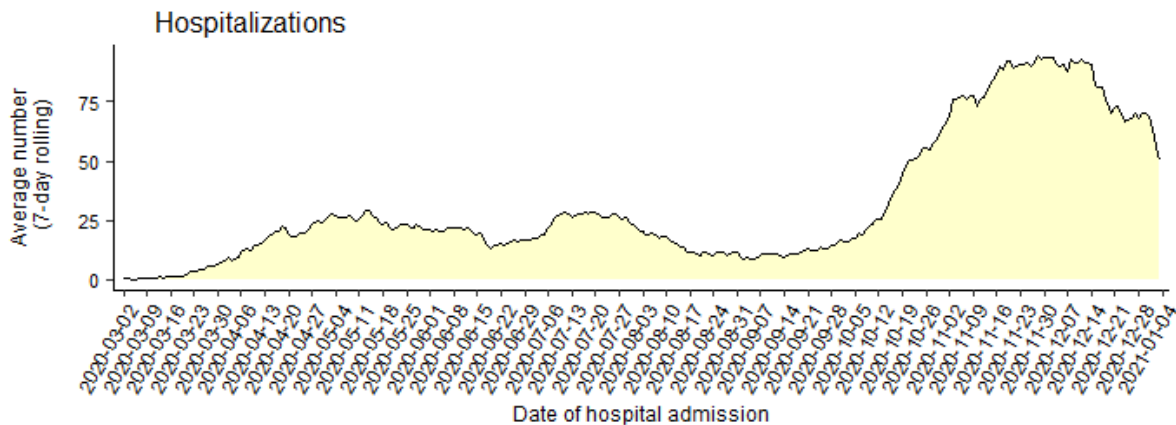
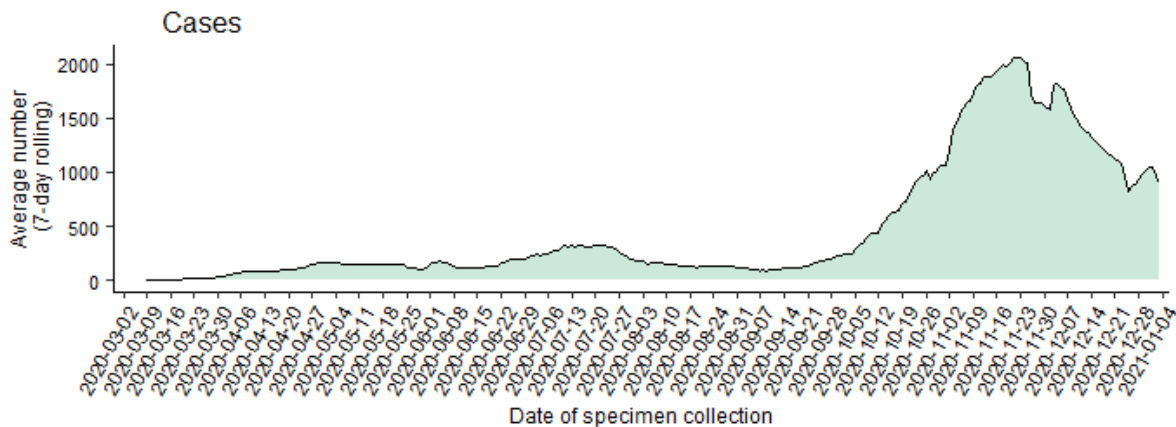
Courtesy of Presbyterian Healthcare Services – January 5, 2021.



*Investing for tomorrow, delivering today.*

1190 S. St. Francis Drive • Santa Fe, NM 87505 • Phone: 505-827-2613 • Fax: 505-827-2530 • nmhealth.org

# Average number (7-day rolling average) of cases, hospitalizations, and deaths over time



Note: Cases, hospitalizations, and deaths may not yet be reported in the last 7-14 days.

As of 1/4/21



**Key**

Low Level Endemic  
**<1.0**

Approaching Low  
Level Endemic  
**1.0**

Requiring further  
mitigation **>1.0**

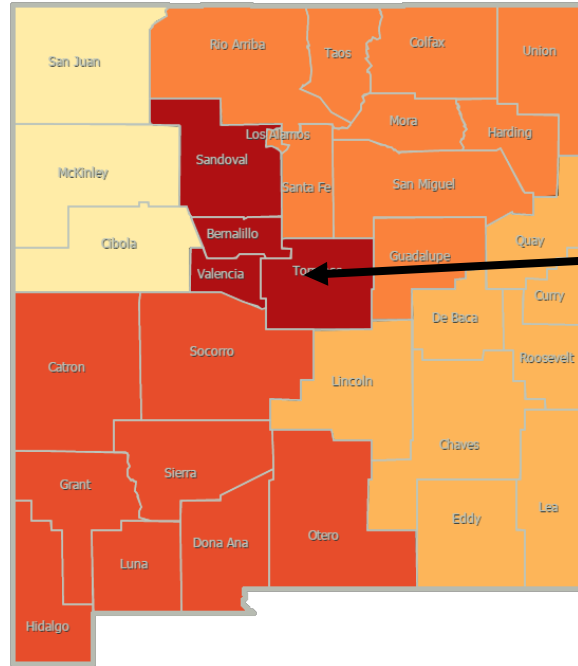
**Northwest**  
**R\_effective 0.9 ↑**

**Northeast**  
**R\_effective 0.9 ↑**

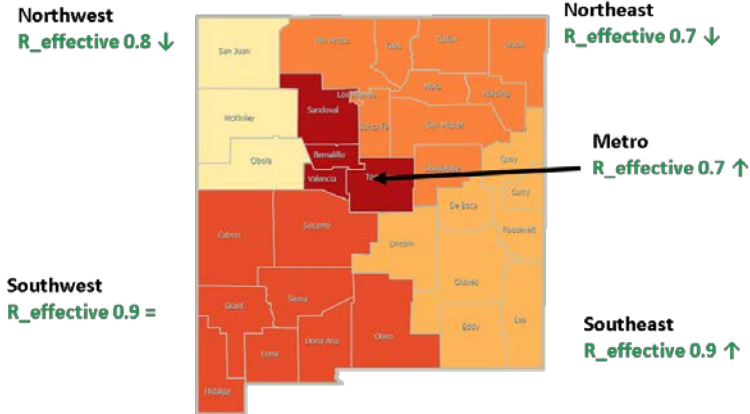
**Metro**  
**R\_effective 0.9 ↑**

**Southwest**  
**R\_effective 1.1 ↑**

**Southeast**  
**R\_effective 1.0 ↑**



As of December 29, 2020



Region	R-effective	95% Confidence Interval
State	1.0	[0.8, 1.2]
Metro	0.9	[0.6, 1.3]
Northeast	0.9	[0.4, 1.5]
Northwest	0.9	[0.5, 1.4]
Southeast	1.0	[0.6, 1.5]
Southwest	1.1	[0.6, 1.6]

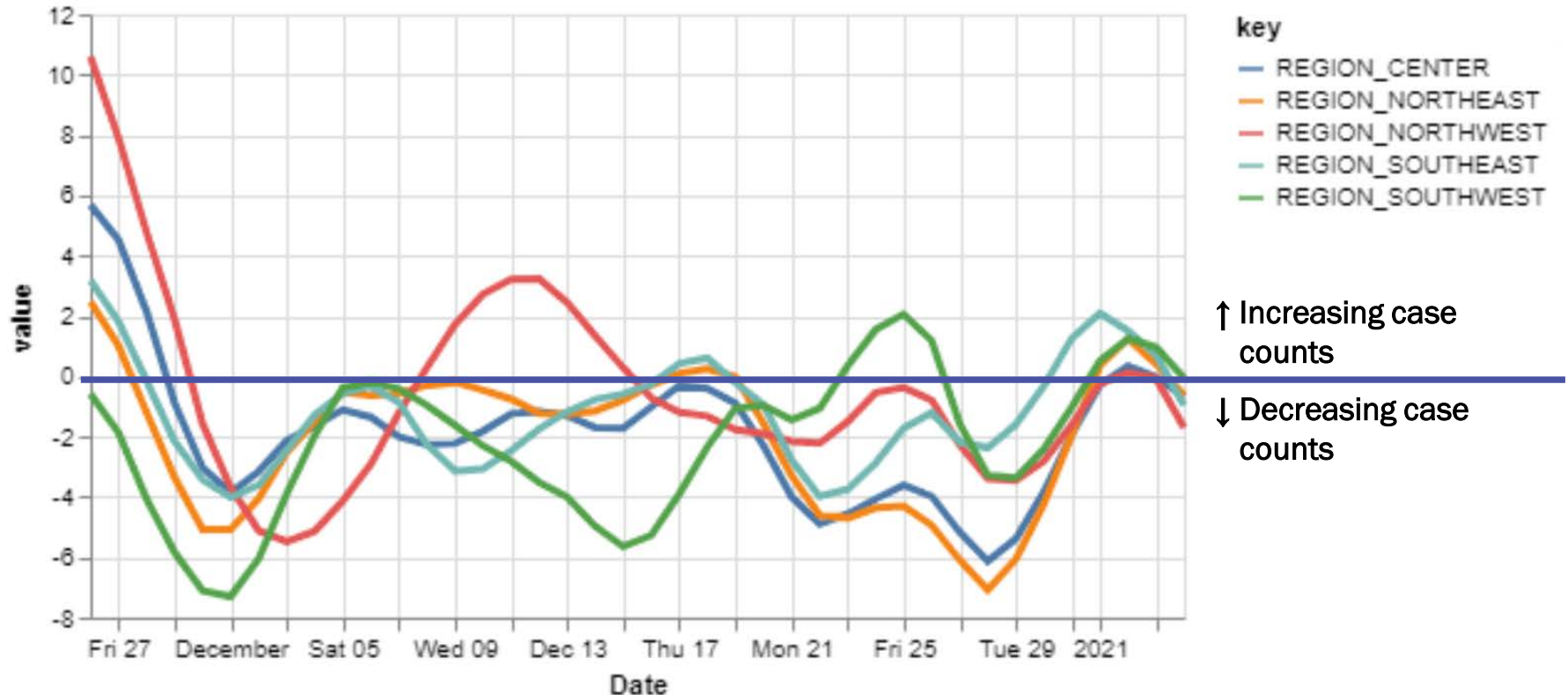
Courtesy of Presbyterian Healthcare Services – January 5, 2021.



*Investing for tomorrow, delivering today.*

# All five regions have growth around 0.

## 14-day relative growth rate (%), Regions



↑ Increasing case counts  
↓ Decreasing case counts

Courtesy of Presbyterian Healthcare Services – January 5, 2021.



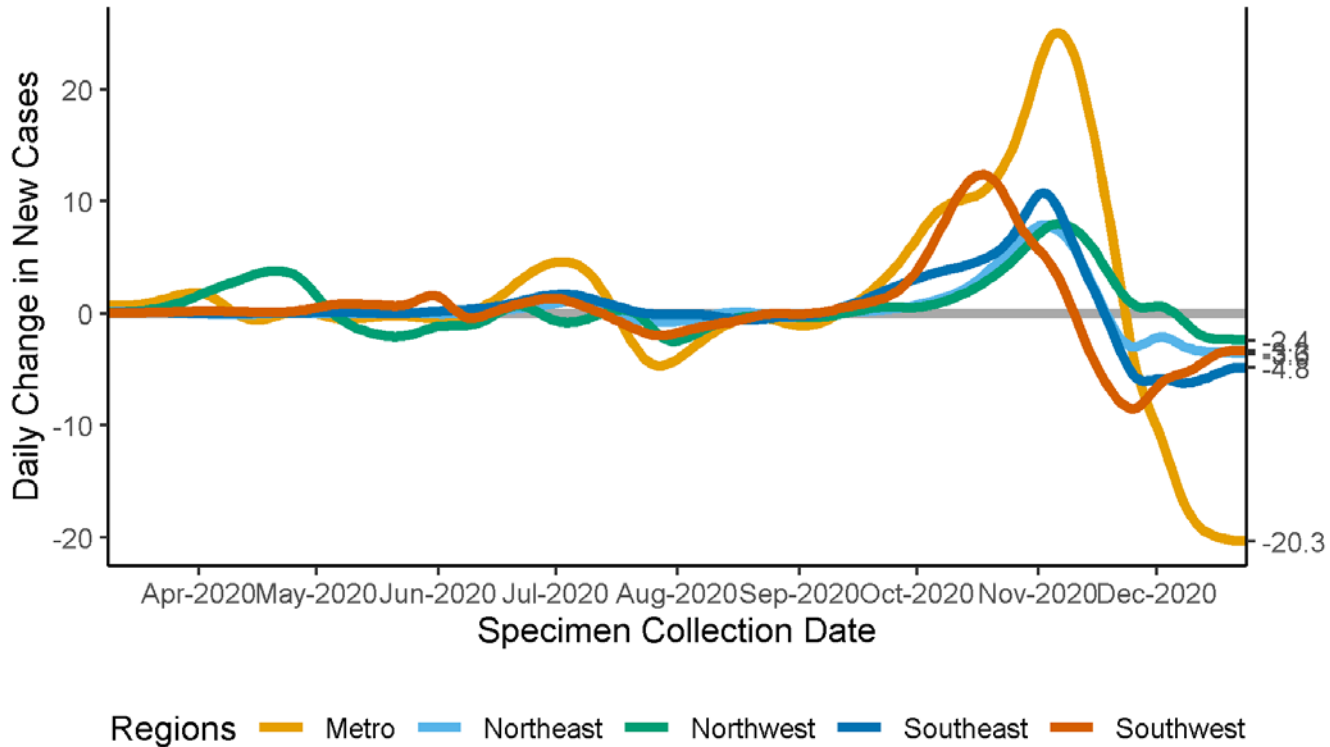
*Investing for tomorrow, delivering today.*



1190 S. St. Francis Drive • Santa Fe, NM 87505 • Phone: 505-827-2613 • Fax: 505-827-2530 • nmhealth.org

# Epidemic Growth Acceleration

Daily Change in New COVID-19 Cases, by New Mexico Region, as of January 04, 2021

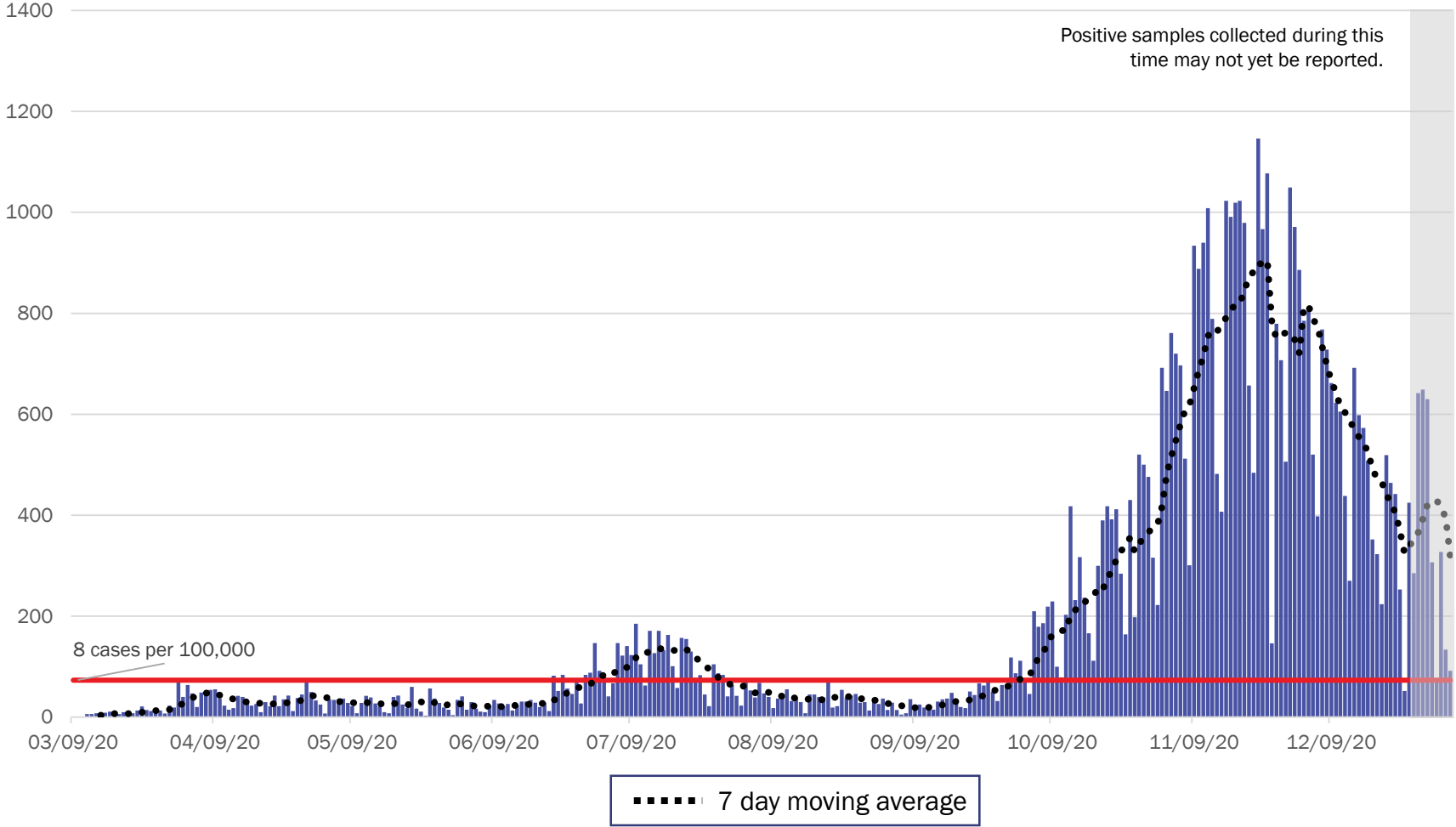


Assumes a 10 day lag in result reporting.

Source: Infectious Disease Epidemiology Bureau, Epidemiology and Response Division 1.4.2021, New Mexico Department of Health.

# Metro Region Case Count by Collection Date with 7 Day Moving Average

## January 5, 2021



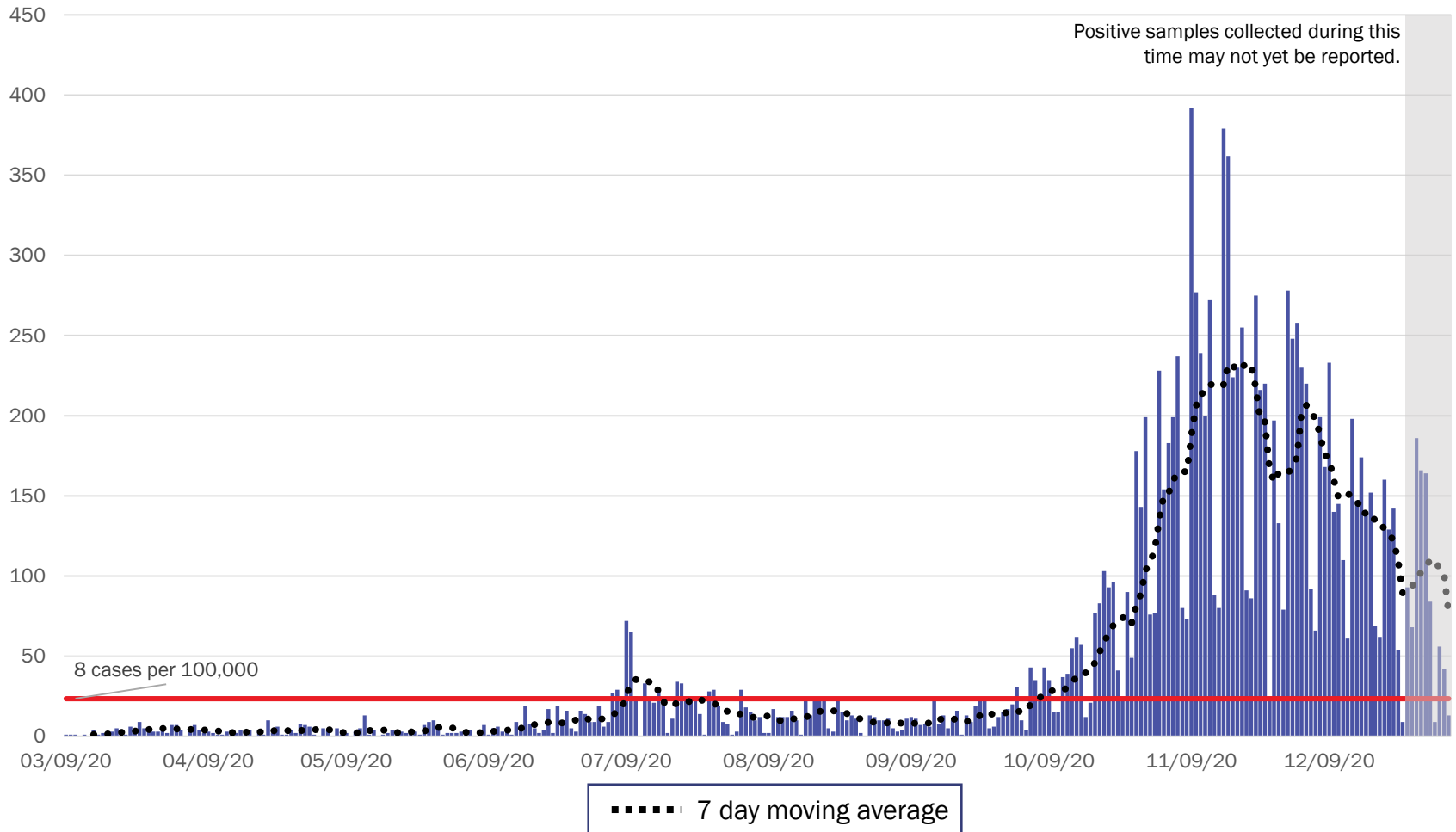
Source: Infectious Disease Epidemiology Bureau, Epidemiology and Response Division 1.5.2021, New Mexico Department of Health.



*Investing for tomorrow, delivering today.*



# Northeast Region Case Count by Collection Date with 7 Day Moving Average January 5, 2021



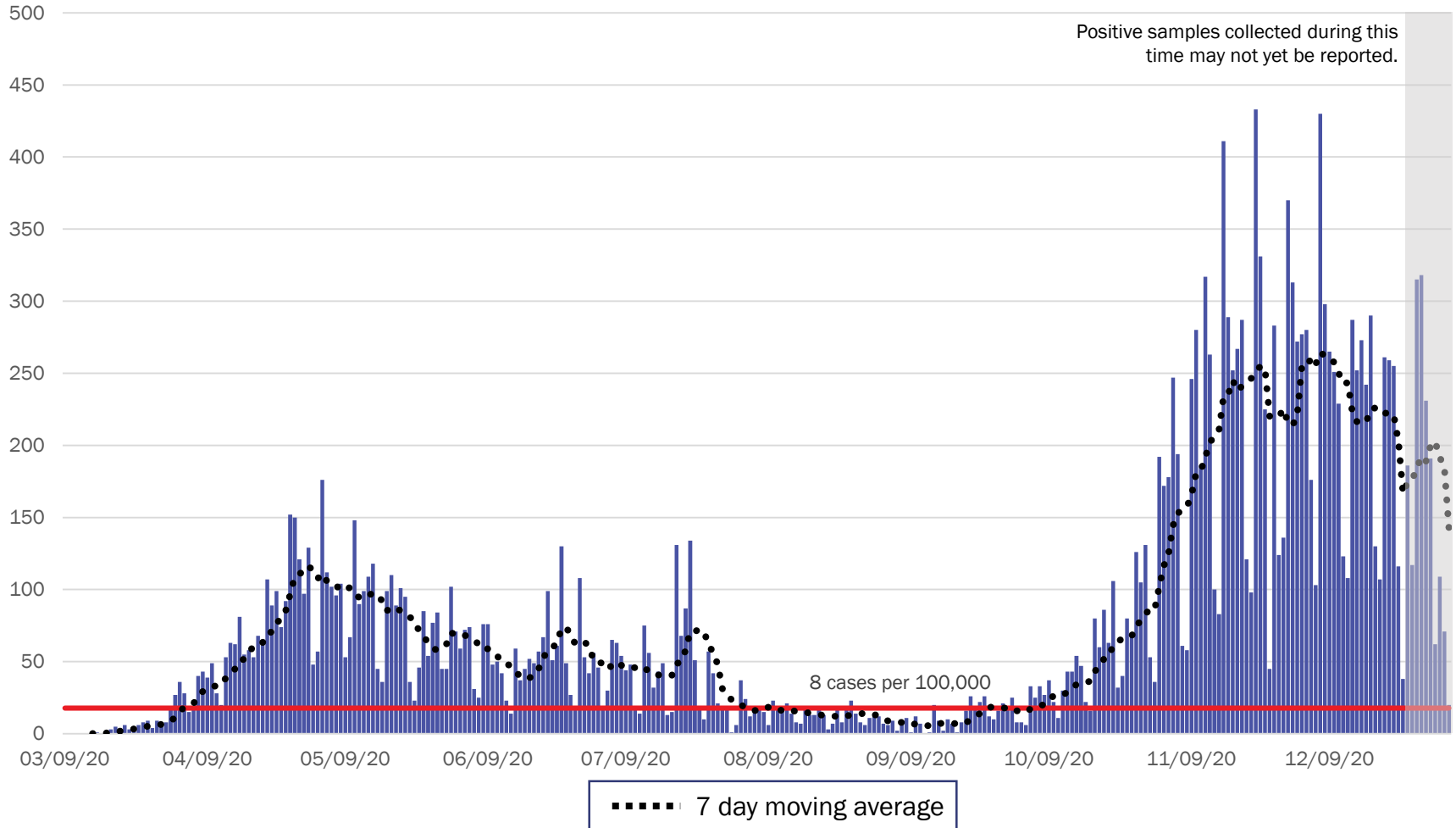
Source: Infectious Disease Epidemiology Bureau, Epidemiology and Response Division 1.5.2021 New Mexico Department of Health.



*Investing for tomorrow, delivering today.*

1190 S. St. Francis Drive • Santa Fe, NM 87505 • Phone: 505-827-2613 • Fax: 505-827-2530 • nmhealth.org

# Northwest Region Case Count by Collection Date with 7 Day Moving Average January 5, 2021



Source: Infectious Disease Epidemiology Bureau, Epidemiology and Response Division 1.5.2021, New Mexico Department of Health.

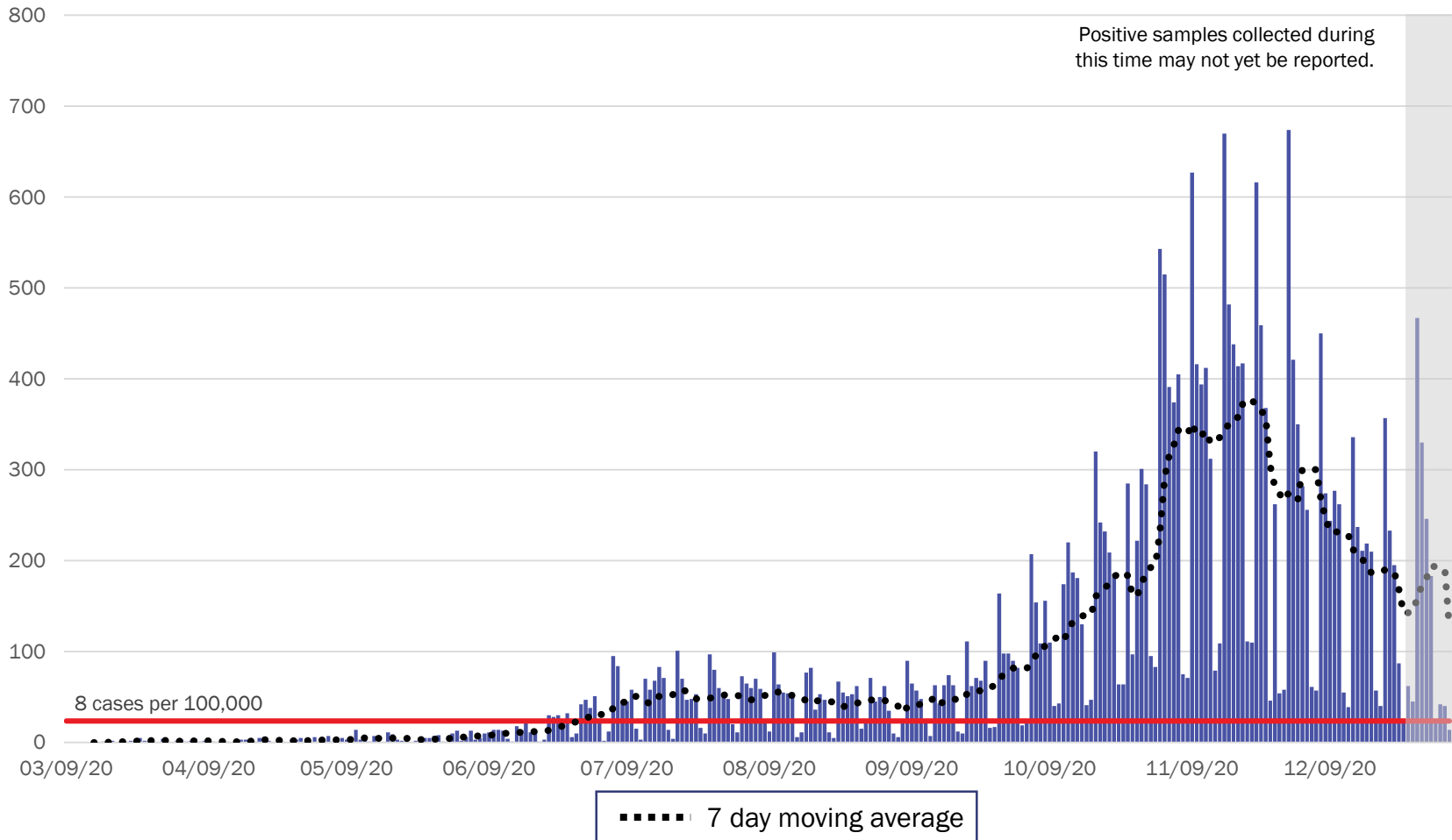


*Investing for tomorrow, delivering today.*



1190 S. St. Francis Drive • Santa Fe, NM 87505 • Phone: 505-827-2613 • Fax: 505-827-2530 • nmhealth.org

# Southeast Region Case Count by Collection Date with 7 Day Moving Average – January 5, 2021



Source: Infectious Disease Epidemiology Bureau, Epidemiology and Response Division 1.5.2021, New Mexico Department of Health.

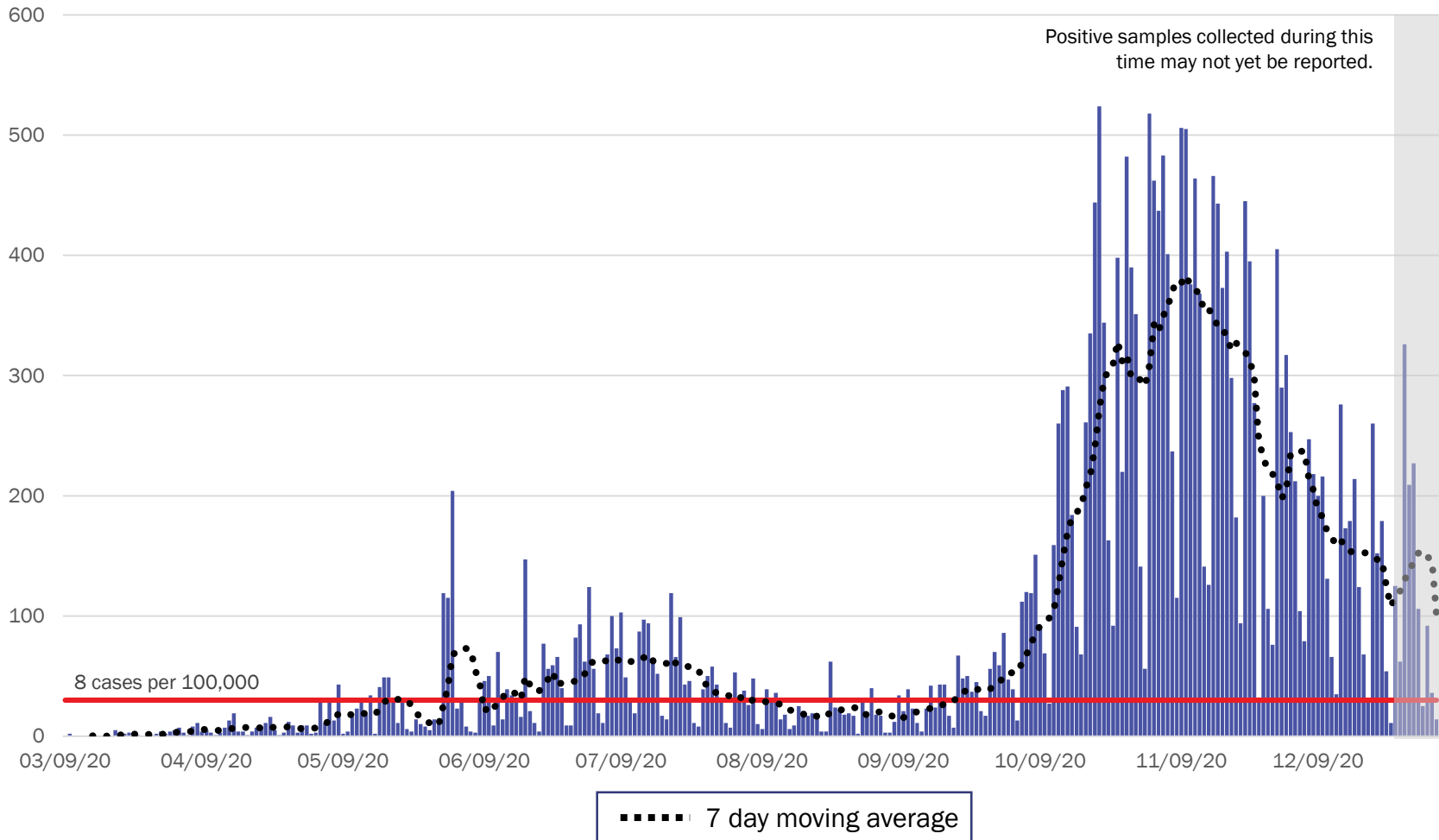


Investing for tomorrow, delivering today.



1190 S. St. Francis Drive • Santa Fe, NM 87505 • Phone: 505-827-2613 • Fax: 505-827-2530 • nmhealth.org

# Southwest Region Case Count by Collection Date with 7 Day Moving Average – January 5, 2021



Source: Infectious Disease Epidemiology Bureau, Epidemiology and Response Division 1.5.2021, New Mexico Department of Health.



*Investing for tomorrow, delivering today.*

1190 S. St. Francis Drive • Santa Fe, NM 87505 • Phone: 505-827-2613 • Fax: 505-827-2530 • nmhealth.org

# New Mexico Status Updates

- Case count: Statewide, the decrease in daily case counts may be slowing.
- Hospitalizations: Hospitalizations remain high.
- Deaths: Weekly COVID-19 deaths remain high, but appear to be declining.

For more information, please visit the [Epidemiology Reports](https://cv.nmhealth.org/epidemiology-reports/) page on the NMDOH COVID-19 website: <https://cv.nmhealth.org/epidemiology-reports/>

# Supplementary Slides

# Modeling Assumptions

Variable	Measured Value	Value as of 1.5.2021
R_Effective	Actual Measured Daily Value by key county	R_eff=1.0
Positive Test Multiplier	Calculated by LANL	2.1
Hospitalization and Mortality	Actual rolling value / estimated number of total infected	Medical 0.35% ICU 0.12% Vent Rate 69% of ICU Crude Case Fatality Rate 2.1%
Length of Stay	Actual rolling value / estimated number of total infected	Medical 5 days ICU 14 days ICU on Vent 14 days